

ΝΥΧΤΑ ΘΑΝΑΤΟΥ.

10 ΚΛΙΨΕ ΣΤΑ ΓΟΝΑΤΑ ΜΟΥ ΤΗΝ ΠΤΩΠΗ ΣΟΥ.

Handwritten musical score for the first system. It consists of three staves. The top staff is a treble clef with a key signature of two sharps (F# and C#) and a common time signature (C). It contains two measures of whole rests. The middle staff is a treble clef with the same key signature and time signature, containing two measures of music with triplets of eighth notes. The bottom staff is a bass clef with the same key signature and time signature, containing two measures of music with quarter notes and rests.

Handwritten musical score for the second system. It consists of three staves. The top staff is a treble clef with a key signature of two sharps (F# and C#) and a common time signature (C). It contains two measures of music with lyrics: "Τω. πα θα γρά γεις υαί ου" and "πα ω πέ". The middle staff is a treble clef with the same key signature and time signature, containing two measures of music with triplets of eighth notes. The bottom staff is a bass clef with the same key signature and time signature, containing two measures of music with rests.

ΚΛΑΨΕ ΣΤΑ ΓΟΝΑΤΑ ΜΟΥ ΤΗ ΝΤΡΟΠΗ ΣΟΥ

Handwritten musical notation for the first system, featuring a vocal line and a piano accompaniment. The key signature is two sharps (F# and C#), and the time signature is 3/4. The lyrics are: "ωχ ωχ, ο σα βε πρό λαι κ' ε ε".

Handwritten musical notation for the second system, continuing the piano accompaniment with triplets and slurs. The lyrics "ωχ ωχ, ο σα βε πρό λαι κ' ε ε" are written above the notes.

Handwritten musical notation for the third system, featuring a vocal line and a piano accompaniment. The key signature is two sharps (F# and C#), and the time signature is 3/4. The lyrics are: "α κου οεσ τι υπο - -".

Handwritten musical notation for the fourth system, continuing the piano accompaniment with triplets and slurs. The lyrics "α κου οεσ τι υπο - -" are written above the notes.

Handwritten musical score for the first system. It consists of a vocal line and two piano accompaniment lines. The key signature is two sharps (F# and C#), and the time signature is 3/4. The vocal line has the lyrics: "Μα εἰ εἰ ἰοὶ ἔ ξου εἰ φε ὄφει εἰς ἄ ρα". The piano accompaniment features a rhythmic pattern of eighth notes with accents, often beamed in groups of three. The system concludes with a double bar line and repeat slashes (//) on both piano staves.

Two empty musical staves, likely representing a section of the score that is not fully transcribed or is a placeholder.

Handwritten musical score for the second system. It consists of a vocal line and two piano accompaniment lines. The key signature is two sharps (F# and C#), and the time signature is 3/4. The vocal line has the lyrics: "μὴ σεῖς. Ἐ ξου μ α". The piano accompaniment continues with the same rhythmic pattern of eighth notes with accents, beamed in groups of three. The system concludes with a double bar line and repeat slashes (//) on both piano staves.

ΚΛΑΨΕ ΣΤΑ ΓΟΝΑΤΑ ΜΟΥ ΤΗΝ ΠΡΟΤΗ ΣΟΥ

I VOLTA.

γι' σους Ma γι' σους Τον και'

I VOLTA.

I

II VOLTA

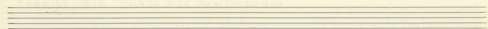
pb γι' σους τον και'

I

II VOLTA.

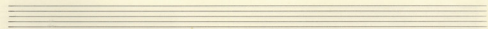
Handwritten musical score for the first system. The top staff is a vocal line in treble clef with a key signature of two sharps (F# and C#). It begins with a whole note chord consisting of a half note 'o' and a half note 'pò', followed by a melodic phrase. The two lower staves are piano accompaniment. The upper piano staff contains a melodic line with triplets of eighth notes. The lower piano staff contains a bass line with triplets of eighth notes and vertical stems. The system concludes with a double bar line and repeat slashes on both piano staves.

Handwritten musical score for the second system. The top staff is a vocal line in treble clef with a key signature of two sharps. It contains the lyrics: "Κυρία ψε οσα γο να τα που εινι νερο". The two lower staves are piano accompaniment. The upper piano staff features a melodic line with triplets of eighth notes. The lower piano staff features a bass line with triplets of eighth notes and vertical stems. The system concludes with a double bar line and repeat slashes on both piano staves.



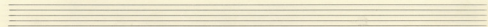
Musical notation for the first system, featuring a vocal line and a piano accompaniment. The vocal line includes the lyrics "Па соу" and "Ба соу су".

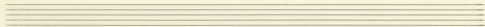
Musical notation for the second system, featuring a piano accompaniment with triplets and slurs.



Musical notation for the third system, featuring a vocal line and a piano accompaniment. The vocal line includes the lyrics "Па w", "со ке га", and "и пе уар".

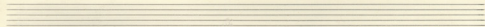
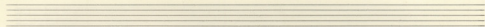
Musical notation for the fourth system, featuring a piano accompaniment with triplets and slurs, ending with double bar lines.





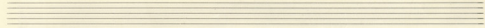
Musical notation for the first system, featuring a treble clef, a key signature of three sharps (F#, C#, G#), and a common time signature (C). The melody consists of a whole rest, followed by a half note, and then a quarter note with a slur. The lyrics "ba vai za" are written below the notes.

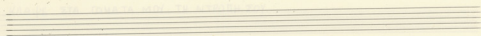
Musical notation for the second system, including a bass clef and a common time signature. The left hand features a series of triplets of eighth notes, while the right hand has a melodic line with slurs and a sharp sign. The lyrics "ba vai za" are positioned above the first measure.



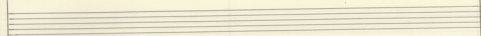
Musical notation for the third system, featuring a treble clef, a key signature of three sharps, and a common time signature. The melody includes a quarter note, a half note, and a quarter note with a slur. The lyrics "xe pa nov" are written below the first measure, "cra do" below the second, and "com o pe" below the third.

Musical notation for the fourth system, including a bass clef and a common time signature. The left hand features a series of triplets of eighth notes, while the right hand has a melodic line with slurs and a sharp sign. The lyrics "xe pa nov" are positioned above the first measure, "cra do" above the second, and "com o pe" above the third.

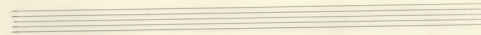
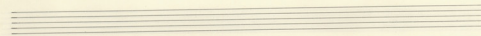




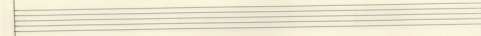
Musical notation for the first system, featuring a vocal line in treble clef with lyrics "En sou" and "fi da da".



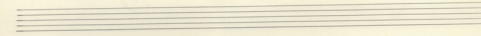
Musical notation for the second system, featuring guitar accompaniment with triplets and a double bar line.



Musical notation for the third system, featuring a vocal line in treble clef with lyrics "pe sou" and "pa ra ma ra ra".



Musical notation for the fourth system, featuring guitar accompaniment with triplets and a double bar line.





I VOLTA. II VOLTA.

ora Ba ra ra pa' ra ra ra

Detailed description: This system contains the first two staves of a musical score. The top staff is a vocal line in G major (one sharp) and 3/4 time. It is divided into two sections: 'I VOLTA.' and 'II VOLTA.'. The lyrics are 'ora Ba ra ra pa' ra ra ra'. The first section has a half note 'ora', followed by a quarter note 'Ba', and an eighth-note triplet 'ra ra ra'. The second section has a half note 'pa'', followed by an eighth-note triplet 'ra ra ra'. The two lower staves are piano accompaniment staves, both of which contain double bar lines (//) indicating that the accompaniment is not written out for this section.

Detailed description: Two empty musical staves, one in treble clef and one in bass clef, both in G major and 3/4 time.

ora

Detailed description: This system contains the third and fourth staves. The top staff is a vocal line with a half note 'ora' followed by a long horizontal line representing a sustained note. The bottom staff is a piano accompaniment line featuring four groups of triplets, each marked with a '3' above it. Each triplet consists of three eighth notes. The first triplet is on a G note, the second on an A note, the third on a B note, and the fourth on a C note. The system concludes with a double bar line and a fermata over the final note.