

ΝΥΧΤΑ ΘΑΝΑΤΟΥ

(6)

ΤΟΡΑ ΚΡΥΦΕ ΤΟΝ ΘΜΑΣΟΥ

A musical staff with a treble clef, a key signature of two flats (B-flat and E-flat), and a whole rest.

A musical staff with a treble clef, a key signature of two flats, and a melodic line consisting of quarter notes and eighth notes.

A musical staff with a bass clef, a key signature of two flats, and a melodic line consisting of quarter notes and eighth notes.

A musical staff with a treble clef, a key signature of two flats, and a whole rest.

A musical staff with a treble clef, a key signature of two flats, and a melodic line consisting of quarter notes and eighth notes.

A musical staff with a bass clef, a key signature of two flats, and a melodic line consisting of quarter notes and eighth notes.

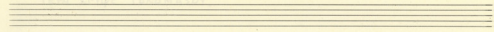
ΤΩΡΑ ΚΡΥΨΕ Τὸ ὄΝΟΜΑΣΟΥ.

Mε θα σὺν ἴσιν ἐπὶ καρδίᾳ σου  
 τὴν παρὰ σέθεν ἔργα νεότητος σου

ὅτι παρὰ σέθεν ὁ καρπὸς τῆς χάριτος  
 καὶ σέθεν ἔργα ποιῶν νεότητος σου

Τὴν παρὰ κρῖ ψεῖζον μακάριον  
 δὲν ἔρα γινῶν οἱ ἐπίλοιποι

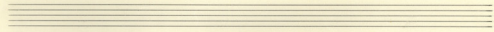
κίε - τὸ ὄρος ἀραιεὶς  
 μαρὸς οὐκ ἔσται ἕως οὐρανοῦ



Handwritten musical notation in G major (one sharp) and 4/4 time. The melody is written in the treble clef. The lyrics are in Greek.

Καὶ ἔν - ὁ ἄπο πο - ῶς ἂν ἴ - πο - ῶς  
 πρὸς τοὺς ἴσ - τῶς τοὺς ἴσ - τῶς

Handwritten musical notation in G major and 4/4 time. The melody is in the treble clef, and the bass line is in the bass clef. The bass line includes bar lines and vertical tick marks.



Handwritten musical notation in G major and 4/4 time. The melody is in the treble clef. The lyrics are in Greek.

Μὲ - - νο Μὲ σα σα - ῶς ἴ - πο - ῶς  
 Ἄ - - γρια ἴσ - τῶς καὶ - - ζῆ - λῶς

Handwritten musical notation in G major and 4/4 time. The melody is in the treble clef, and the bass line is in the bass clef. The bass line includes bar lines and vertical tick marks.

