

Handwritten musical notation on five staves. The notation includes various rhythmic values, stems, and beams. A circled '1' is present at the beginning of the first staff, and a circled '2' is present at the beginning of the fourth staff. A downward-pointing arrow is located between the fourth and fifth staves.

Handwritten musical notation on five staves. The notation includes various rhythmic values, stems, and beams. A circled '1' is present at the beginning of the first staff, and a circled '2' is present at the beginning of the second staff. A double bar line is located at the end of the fifth staff.

Handwritten numbers and a fraction:

$$\frac{41}{14} = 2 \frac{13}{14}$$

Below the fraction, the number 28 is written.

Handwritten musical notation on a five-line staff. The notation includes rhythmic values such as eighth and sixteenth notes, and rests. A treble clef is visible at the beginning. The piece concludes with a double bar line and repeat dots.

Handwritten musical notation on a five-line staff, featuring a complex arrangement of notes and rests. A treble clef is present. The notation is dense and includes various rhythmic patterns.

Handwritten musical notation on a five-line staff. It begins with a treble clef and contains several measures of music with rhythmic markings. A double bar line is used to separate sections.

Handwritten musical notation on a five-line staff. It starts with a treble clef and includes notes with stems and beams. A double bar line is present, followed by a few more measures of notation.

Five empty musical staves, each consisting of five horizontal lines, located at the bottom of the page.

mib

Handwritten musical notation on a grand staff. The top staff is in treble clef with a key signature of one flat (Bb). The bottom staff is in bass clef. The music consists of several measures of notes and rests.

Handwritten musical notation on a grand staff. The top staff is in treble clef with a key signature of one flat (Bb). The bottom staff is in bass clef. The music consists of several measures of notes and rests.

Handwritten musical notation on a grand staff. The top staff is in treble clef with a key signature of one flat (Bb). The bottom staff is in bass clef. The music consists of several measures of notes and rests.

Handwritten musical notation on a grand staff. The top staff is in treble clef with a key signature of one flat (Bb). The bottom staff is in bass clef. The music consists of several measures of notes and rests.

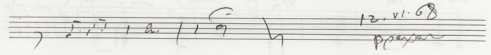
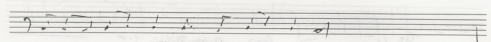
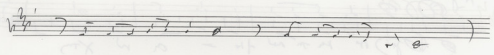
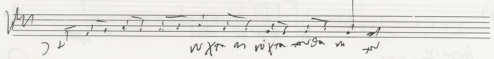
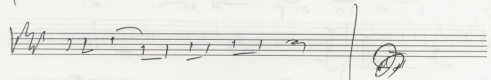
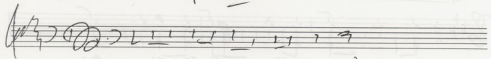
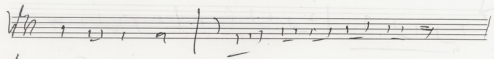
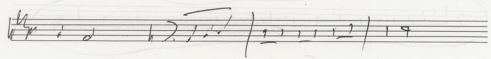
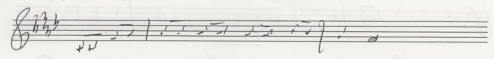
Handwritten musical notation on a grand staff. The top staff is in treble clef with a key signature of one flat (Bb). The bottom staff is in bass clef. The music consists of several measures of notes and rests.

Handwritten musical notation on a grand staff. The top staff is in treble clef with a key signature of one flat (Bb). The bottom staff is in bass clef. The music consists of several measures of notes and rests.

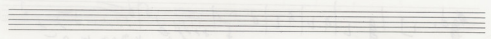
Handwritten musical notation on a grand staff. The top staff is in treble clef with a key signature of one flat (Bb). The bottom staff is in bass clef. The music consists of several measures of notes and rests.

Handwritten musical notation on a grand staff. The top staff is in treble clef with a key signature of one flat (Bb). The bottom staff is in bass clef. The music consists of several measures of notes and rests.

Handwritten musical notation on a grand staff. The top staff is in treble clef with a key signature of one flat (Bb). The bottom staff is in bass clef. The music consists of several measures of notes and rests.



12.vi.08
ppp



1 2 3

4 4

5

Agus