

0 ANTPEAS.

3^{oy} KAIPOS NA ΔEIS.

37

KAIPOS NA ΔEIS.

The first system of the handwritten musical score consists of two staves. The upper staff is a treble clef with a key signature of two sharps (F# and C#). It contains two measures of music, each starting with a whole rest. The lower staff is a bass clef with the same key signature. It contains two measures of music. The first measure has a bass line starting with a half note G2, followed by a quarter note F#2, and a quarter note E2. The second measure has a bass line starting with a half note D2, followed by a quarter note C#2, and a quarter note B1. There are dynamic markings 'f.' at the beginning of each measure in the bass staff.

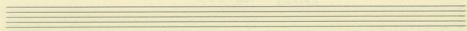
The second system of the handwritten musical score features a vocal line in a treble clef with a key signature of two sharps. The lyrics are written below the notes: "Ιου η παν ψηφο ρα αοι ρα". The melody consists of a series of quarter notes: G4, A4, B4, C5, B4, A4, G4, F#4, E4, D4, C4. There are rests at the beginning and end of the phrase.

The third system of the handwritten musical score consists of two staves. The upper staff is a treble clef with a key signature of two sharps. It contains three measures of music. The first measure has a half note G4, followed by a quarter note A4. The second measure has a half note B4, followed by a quarter note C5. The third measure has a half note B4, followed by a quarter note A4, and a quarter note G4. The lower staff is a bass clef with the same key signature. It contains three measures of music. The first measure has a bass line starting with a half note G2, followed by a quarter note F#2, and a quarter note E2. The second measure has a bass line starting with a half note D2, followed by a quarter note C#2, and a quarter note B1. The third measure has a bass line starting with a half note G1, followed by a quarter note F#1, and a quarter note E1. There are dynamic markings 'f.' at the beginning of each measure in the bass staff.

ΚΑΙΡΟΣ ΝΑ ΔΕΙΣ

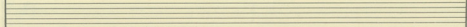
Ψέψ- μα ρα ου - - - τε πα σου πο - υε σοε

va Kiaù - ρι - ο ψέψ - μα ρα σα

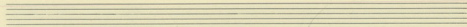
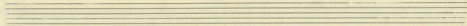


(2)

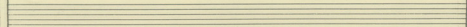
Handwritten musical notation in G major (one sharp) and 2/4 time. The melody is written on a single staff with lyrics underneath. The lyrics are: "Yá - dá sou tiou. ψάψα τα σου χι υί οι 'εχ."



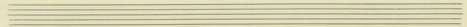
Handwritten piano accompaniment for the first system, consisting of two staves (treble and bass clef). The right hand plays chords and the left hand plays a simple bass line.



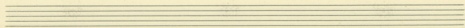
Handwritten musical notation in G major (one sharp) and 2/4 time. The melody is written on a single staff with lyrics underneath. The lyrics are: "Dpoi sou ta - κι οι φιλοι σου σου Κυ βαν εις α"



Handwritten piano accompaniment for the second system, consisting of two staves (treble and bass clef). The right hand plays chords and the left hand plays a simple bass line.

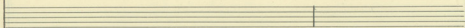


-4-

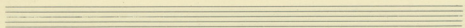
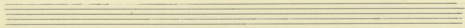


(3) (2)

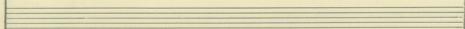
Handwritten musical notation in G major (one sharp) and 4/4 time. The melody is written on a single staff with lyrics underneath. The lyrics are: "ηι - - - - - θνα ψω τι κη". The first measure contains a dotted quarter note followed by two eighth notes. The second measure contains a dotted half note. The third measure contains a quarter note followed by two eighth notes. There are two measures of rests following the third measure.



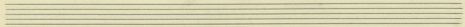
Handwritten musical notation in G major (one sharp) and 4/4 time. The accompaniment is written on two staves (treble and bass clefs). The first two measures feature a simple bass line with chords in the treble clef. The third measure begins a more complex accompaniment with chords in both staves. The fourth measure continues this accompaniment.

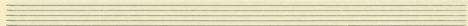


Handwritten musical notation in G major (one sharp) and 4/4 time. The melody is written on a single staff with lyrics underneath. The lyrics are: "αο σα οω ρει - γων οι ψω - ρος". The first measure contains a dotted quarter note followed by two eighth notes. The second measure contains a dotted half note. The third measure contains a quarter note followed by two eighth notes. The fourth measure contains a dotted quarter note followed by two eighth notes. There are two measures of rests following the fourth measure.

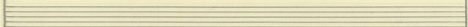


Handwritten musical notation in G major (one sharp) and 4/4 time. The accompaniment is written on two staves (treble and bass clefs). The first two measures feature a simple bass line with chords in the treble clef. The third measure begins a more complex accompaniment with chords in both staves. The fourth measure continues this accompaniment.

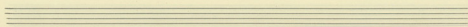
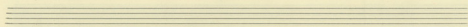




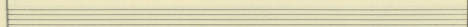
Handwritten musical notation in G major (one sharp) and 2/4 time. The melody consists of quarter notes: G4, A4, B4, C5, B4, A4, G4. The lyrics are: *pa - Kioi Gi noi sou pi psi xi uss a*



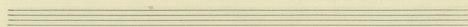
Handwritten accompaniment for the first system, featuring a treble and bass clef. The bass line has a large decorative flourish on the left. The accompaniment consists of chords and single notes, with some chords marked with a '+' sign.

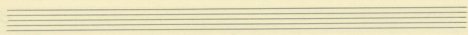


Handwritten musical notation in G major (one sharp) and 2/4 time. The melody consists of quarter notes: G4, A4, B4, C5, B4, A4, G4. The lyrics are: *ni ouis os noi ti youv. sou des ts*

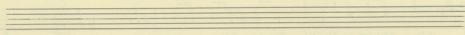
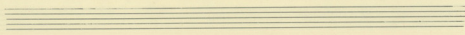


Handwritten accompaniment for the second system, featuring a treble and bass clef. The bass line has a large decorative flourish on the left. The accompaniment consists of chords and single notes, with some chords marked with a '+' sign.

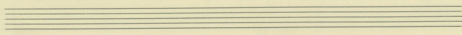


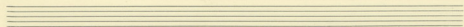


ψιλ - τι - να ο - - νη πα - θου - ως - - ηλ



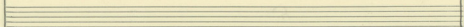
ψιλ - τι - να ο - νη πα - θου - ως - - ηλ



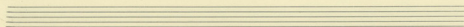


Handwritten musical notation for the first system, featuring a treble clef, a key signature of two sharps (F# and C#), and a common time signature (C). The melody consists of quarter and eighth notes. The lyrics are written below the notes.

zú stis kai pōs va zpa you dū stis kai pōs va

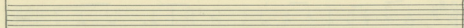


Handwritten musical notation for the second system, featuring a bass clef and a key signature of two sharps. The left hand part includes a double bar line with repeat dots, followed by chords and single notes. The right hand part consists of chords.



Handwritten musical notation for the third system, featuring a treble clef and a key signature of two sharps. The melody includes a slur over a group of notes. The lyrics are written below the notes.

Ka stis kai va do vī stis kai pōs - - - va dū



Handwritten musical notation for the fourth system, featuring a bass clef and a key signature of two sharps. The left hand part includes a double bar line with repeat dots, followed by chords and single notes. The right hand part consists of chords.

