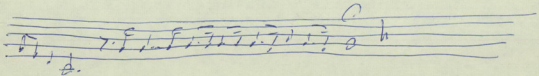
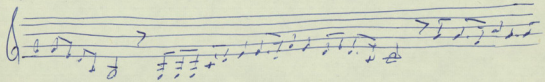
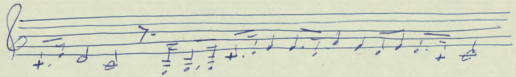
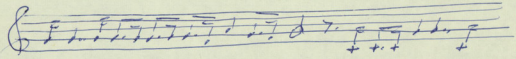
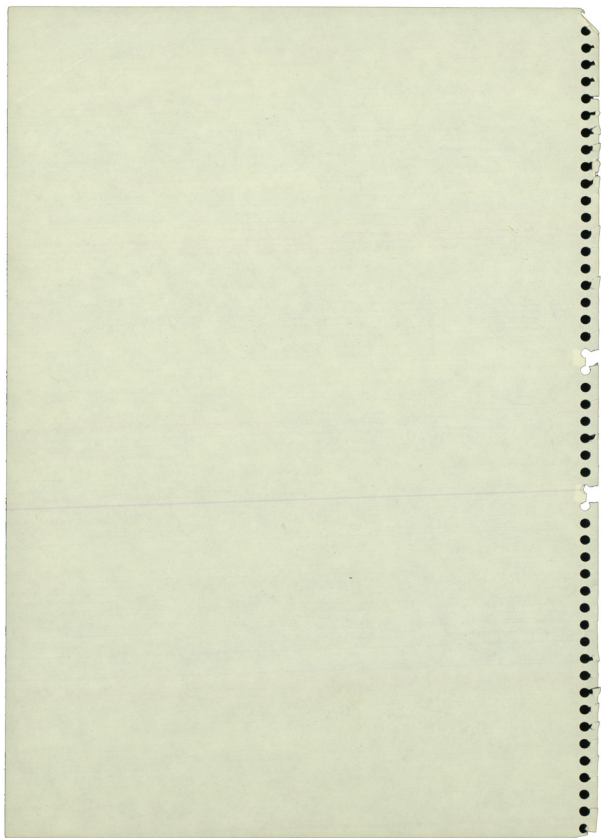


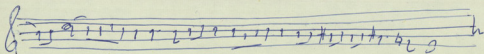
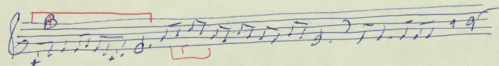
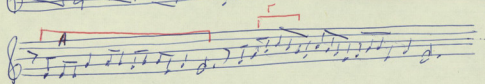
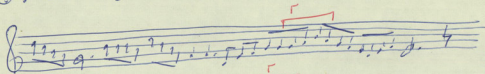
AUTOS 900 #300W KAROTE



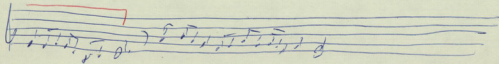
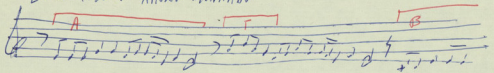
Mujun Theory 303 83



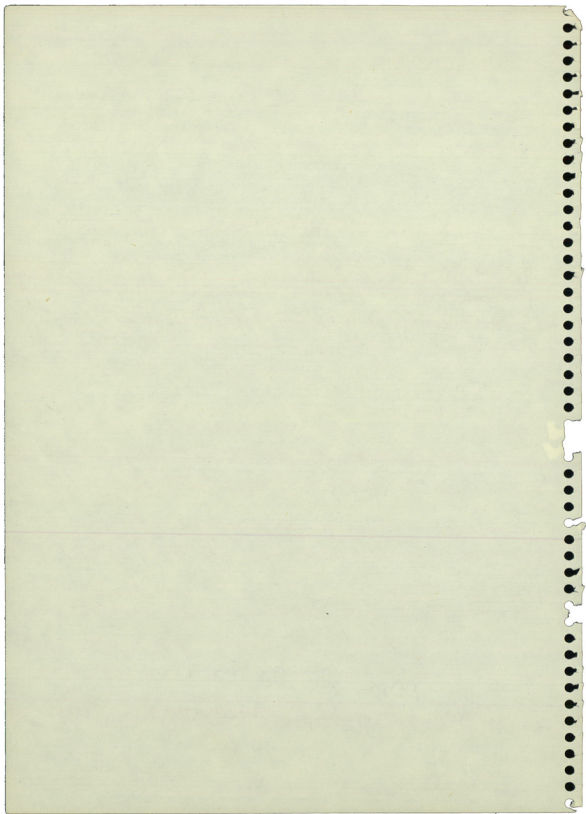
300 EINAR PEMATA NO. 1A



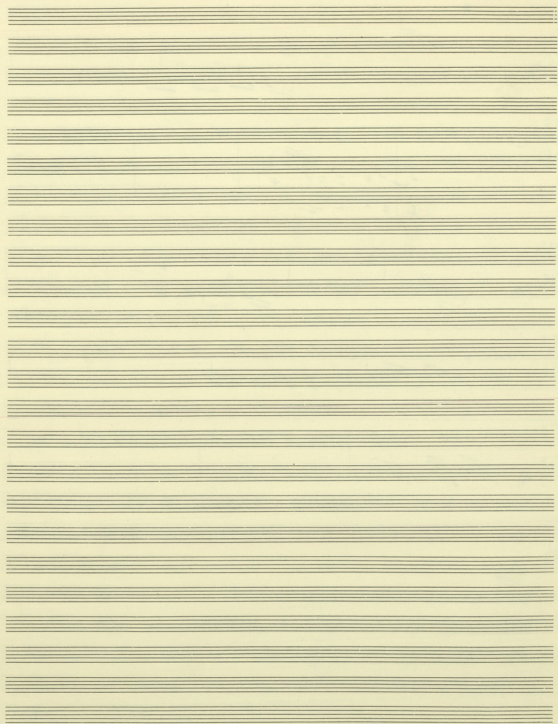
EVALUASI DAN HASIL METANALISIS

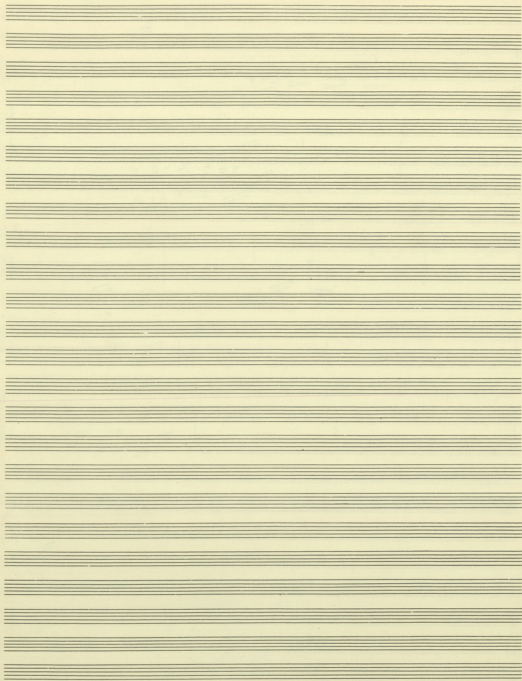


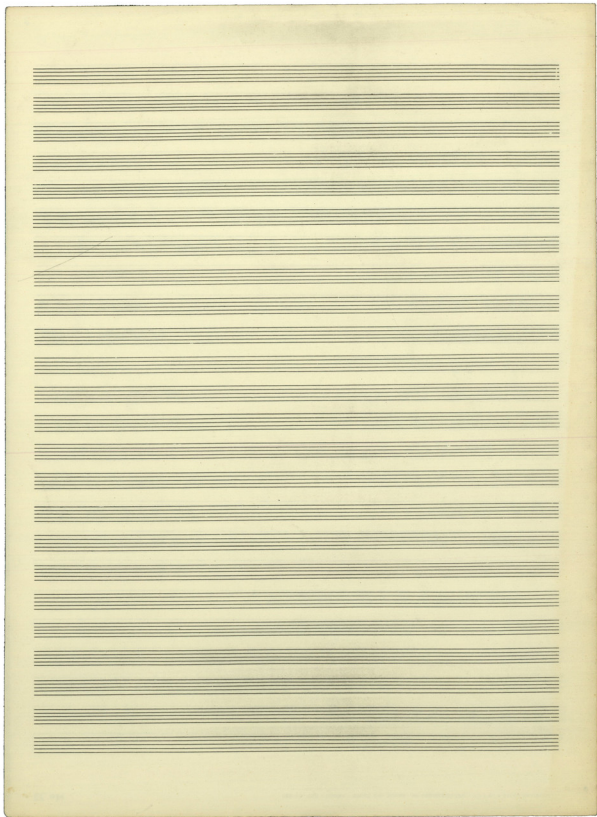
Aksi
Desain
No. 12 Ess 75
No. 12 Ess 71



2. Brown Yennara







KE — Son LA Son m RE LA
 205 2000 yphitteman far yph-tem or — pe ca or de — va fa

LA Son RE
 v kumpo yph — ta va fa va — 2000 mi

LA Son m
 yph-tem or far oi ex 2000 mi — fa-mi ei fa-oi or

LA KE RE
 khibowon a — far 2000 mi yph-tem si fa mi

LA Son RE m RE
 mi — fa-oi yph 2000 mi fa — mi ei fa-oi or ta yph-tem a — yph-tem or mi —

mi RE R
 pi fa-oi mi mi fa yph-tem a — va ca mi mi mi mi

RE RE
 yph-tem or va ca mi mi vi-tem or or mi

RE RE
 mi or yph-tem or mi mi mi mi mi mi mi mi mi mi

RE RE
 — va mi

Empty musical staves for notation.

Handwritten musical score, first system. It consists of six staves. The top staff is a treble clef with a key signature of two flats (Bb and Eb) and a 2/4 time signature. Below the staves, there is handwritten text in Italian: "di un' altra...".

Handwritten musical score, second system. It consists of eight staves. The music continues with various rhythmic patterns and notes. There are some circled annotations on the staves.

TRANSM
di AMPERA
Brescia - 68

A page of musical manuscript paper featuring 22 horizontal staves. Each staff is composed of five parallel lines. The staves are arranged vertically down the page, with a small gap between each one. The paper is off-white and shows signs of age, including a small dark spot on the right side and some faint smudges. The text at the top right is printed in a small, sans-serif font.

Handwritten musical notation on three staves. The first staff begins with a treble clef and a key signature of one flat. The notation consists of rhythmic patterns and notes, with some notes beamed together. The second and third staves continue the musical line with similar rhythmic structures.

Handwritten musical notation on a single staff. It features a complex melodic line with many beamed notes and some slurs. Below the staff, there are handwritten annotations in a cursive script, possibly indicating fingerings or performance instructions.

Handwritten musical notation on two staves. The first staff contains rhythmic patterns with some notes, and the second staff continues with more rhythmic notation. There are handwritten annotations below the first staff.

Handwritten musical notation on two staves. The first staff shows rhythmic patterns and notes, while the second staff continues the notation. There are handwritten annotations below the first staff.

Handwritten musical notation on two staves. The first staff begins with a large bracketed section containing rhythmic patterns and notes. The second staff continues with a few notes and a double bar line.