

Ο ΥΠΝΟΣ ΣΕ ΤΥΛΙΞΕ

ΣΤΙΑΝ ΤΕ ΒΟΥΤΙ

ΣΕ ΥΠΝΟ

ΣΕ ΥΠΝΟ

③

ΜΥΘΙΣΤΟΡΗΜΑ

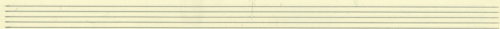
Ο ΥΠΝΟΣ ΣΕ ΤΥΛΙΞΕ

ΣΤΙΑΝ ΤΕ ΒΟΥΤΙ

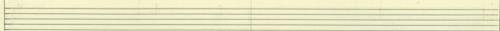
Ο ΥΠΝΟΣ ΣΕ ΤΥΛΙΞΕ

(3)

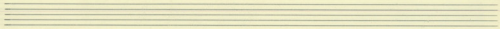
Ο ΥΪΝΟΣ ΣΕ ΤΥΛΙΞΕ.



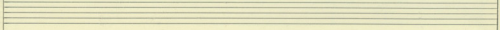
Handwritten musical notation on a single staff, starting with a treble clef and a key signature of one flat (B-flat). The notes are: a whole rest, followed by a quarter note G4, a quarter note A4, a quarter note B4, a quarter note C5, a quarter note B4, a quarter note A4, and a quarter note G4. Below the notes are the lyrics: "Ο υΐνος σε τυλίξε".



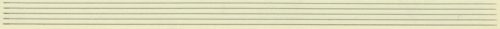
Handwritten musical notation for the first system, consisting of a treble clef staff and a bass clef staff. The treble staff contains chords: a whole rest, a G4 chord, a G4-A4 chord, a G4-A4-B4 chord, and a G4-A4-B4 chord. The bass staff contains a whole rest, followed by quarter notes G3, A3, B3, and C4. The system ends with a double bar line and a repeat sign.



Handwritten musical notation on a single staff, starting with a treble clef and a key signature of one flat. The notes are: a quarter note G4, a quarter note A4, a quarter note B4, a quarter note C5, a quarter note B4, a quarter note A4, a quarter note G4, and a quarter note F4. Below the notes are the lyrics: "Ο υΐνος σε τυλίξε πάλι".



Handwritten musical notation for the second system, consisting of a treble clef staff and a bass clef staff. The treble staff contains chords: a G4 chord, a G4-A4 chord, a G4-A4-B4 chord, a G4-A4-B4 chord, a G4-A4-B4 chord, a G4-A4-B4 chord, and a G4-A4-B4 chord. The bass staff contains a whole rest, followed by quarter notes G3, A3, B3, and C4. The system ends with a double bar line and a repeat sign.



0 YTNOS SE TYAIEE

I VOLTA I VOLTA

va - gai ves me cav e va

I VOLTA II VOLTA

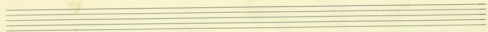
I VOLTA I VOLTA

a or k'va i n'la si va phi ja a'

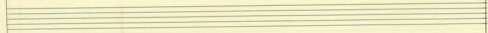
I VOLTA I VOLTA

và - caù vèù pè vèù

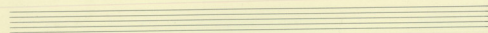
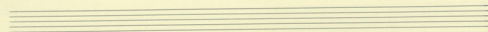
mè ca ozo n' ev xo q' us mè ca om oi



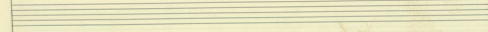
Musical staff with lyrics: a pa vn tm m - - - Koi ta ja za pop pu -



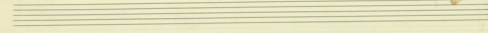
Handwritten musical notation for piano accompaniment, including chords and bass line.

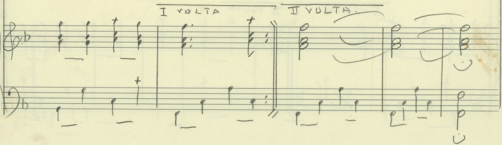
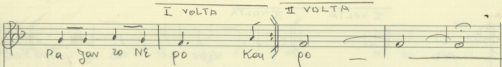
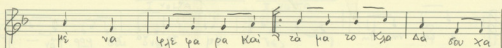


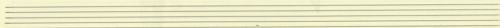
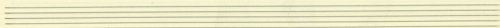
Musical staff with lyrics: I VOLTA II VOLTA
cov Kjeo pi va Eje pa pa Kjeo



Handwritten musical notation for piano accompaniment, including chords and bass line, with repeat signs.

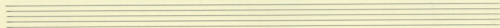
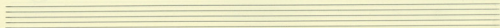






4

МУДИТОРНА



ДИГО АКОМА

