

①

ΜΥΘΙΣΤΟΡΗΜΑ

ΤΩΡΑ ΠΟΥ ΘΑ ΦΥΓΕΙΣ.

ΤΡΑ ΤΟΥ ΘΑ ΦΥΓΕΙΣ.

♩ = 80 Σαν περταίβο

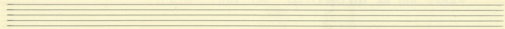
Τω πα Που θα φυγus Παρμαγι σουκαροπα

σι που α δε το φως Κα τω απο κει νο το τηα

ΤΕΡΑ ΠΟΥ ΘΑ ΦΥΓΕΙΣ

τά vi μια φε ρα π'αν'ου, χού σαν -

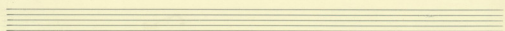
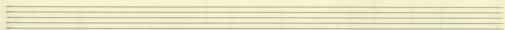
σα, πι, γες κι, ε, ξα, μ'αν, ο, π'α, και



5

Τα το γα τ έρω με να σου θα με μάγει γαν σου πασι νησι περπατα με

Piano accompaniment for the first system, showing chords in both hands.



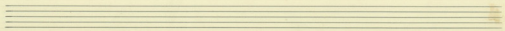
I VOLTA

και

II VOLTA

και σου γαν να με σου γαν τους τα σου

Piano accompaniment for the second system, showing chords in both hands.



ΤΡΑ ΠΟΥ ΕΑ ΠΥΡΑΣ

Handwritten musical notation for the first system, featuring a vocal line in G major (one flat) and a piano accompaniment. The lyrics are: "Θεο - - - - - ρια - - - - - ος αϊς με ος πυ ρι ες ζω γο".

Handwritten musical notation for the second system, showing the piano accompaniment for the first system. It includes a grand staff with treble and bass clefs, with various chords and melodic lines.

Handwritten musical notation for the third system, featuring a vocal line in G major (one flat) and a piano accompaniment. The lyrics are: "νιων πας τα ερα κια με ζω γρω εν αν γο νων πας και εδ".

Handwritten musical notation for the fourth system, showing the piano accompaniment for the third system. It includes a grand staff with treble and bass clefs, with various chords and melodic lines.

Handwritten musical score for the first system. The top staff is a vocal line in G major (one flat) with lyrics: "Aí ha Teuá bíh góu pas ju rza yó oú xw pa - bí ta ve pia je". The bottom staff is a piano accompaniment with chords and some melodic lines. The system concludes with a double bar line.

Handwritten musical score for the second system. The top staff is a vocal line with triplets and lyrics: "pñ xa pa pa πρὸς cia tá sn ja zi upu". The bottom staff is a piano accompaniment with chords and some melodic lines. The system concludes with a double bar line.

Handwritten musical score for the first system. The vocal line is in G major (one flat) and features a triplet of eighth notes. The lyrics are: *xiá tou yvw pi gas evu tou cw xi zous*. The piano accompaniment consists of chords in the left hand and single notes in the right hand.

Handwritten musical score for the second system. The vocal line continues with lyrics: *Tú pa tou Já Gú yus. Tú pa tou ps pa tú tyn pu*. The piano accompaniment includes chords and some melodic lines in the right hand.

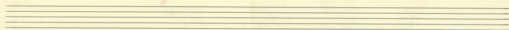
Handwritten musical score for the first system. The top staff is a vocal line in B-flat major (one flat) and 2/4 time. It contains two measures of music with lyrics: "μῆς ἄα πα - ῖς" and "τῷ πατρὶ καὶ υἱὸς δὲν". The notes are quarter notes, with triplets indicated by a '3' over a bracket. The bottom two staves are for piano accompaniment, with chords and some triplets. The first measure of the piano part has a '3' over a bracket. The second measure has a '3' over a bracket and a '1' below it. The piano part consists of chords, some with a '+' sign, and some with a '7' below them.

Handwritten musical score for the second system. The top staff is a vocal line in B-flat major and 2/4 time. It contains two measures of music with lyrics: "ςε πρὶ πῶτον θά σκῳ τῷ σθι καὶ ὡς θά τε γερῶ σθι". The notes are quarter notes, with triplets indicated by a '3' over a bracket. The bottom two staves are for piano accompaniment, with chords and some triplets. The first measure of the piano part has a '3' over a bracket. The piano part consists of chords, some with a '+' sign, and some with a '7' below them.

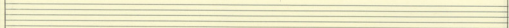


Handwritten musical score for the first system. The vocal line is in G major (one flat) and 4/4 time. It begins with a half rest, followed by a quarter note G4, a quarter rest, and a quarter note G4. The lyrics "Ta pe ma yi sou" are written below. The next measure contains a triplet of eighth notes: G4, A4, B4, with the lyric "co tai di pou" below. The piano accompaniment consists of two staves. The right hand plays chords: G4 (quarter), G4 (quarter), G4 (quarter), G4 (quarter), G4 (quarter), G4 (quarter). The left hand plays chords: G2 (quarter), G2 (quarter), G2 (quarter), G2 (quarter), G2 (quarter), G2 (quarter).

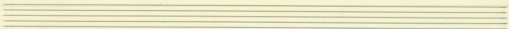
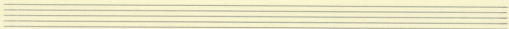
Handwritten musical score for the second system. The vocal line continues in G major and 4/4 time. It starts with a quarter note G4, a quarter note A4, a quarter note B4, and a quarter note G4, with the lyric "Ei se zo fws" below. The next measure contains a triplet of eighth notes: G4, A4, B4, with the lyric "Ka twa ta fwa ta" below. The piano accompaniment continues with chords: G4 (quarter), G4 (quarter), G4 (quarter), G4 (quarter), G4 (quarter), G4 (quarter) in the right hand, and G2 (quarter), G2 (quarter), G2 (quarter), G2 (quarter), G2 (quarter), G2 (quarter) in the left hand.



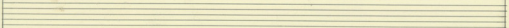
Handwritten musical notation in G major (one flat) with lyrics: *Gu - ja e kai tou tou pa ta vou kai*



Handwritten piano accompaniment for the first system, including treble and bass clefs and chord symbols.



Handwritten musical notation in G major with lyrics: *Ma de tou va me je za za den - - -*



Handwritten piano accompaniment for the second system, including treble and bass clefs and chord symbols.

