

7

How Sweet the Sound of His Amen

οι κω νει ο υσος ος ος του

ο πατρις οα - γου ορι νε - α τρι

ου κει ου πα α'

-37-

Handwritten musical score for two systems, labeled "C. I." and "C. II.".

**System 1 (C. I.):**

- Vocal line:  $\tau\omicron$  —  $\psi\iota\omicron$  —  $\acute{\alpha}\tau\omicron\alpha$  —  $\rho\iota$
- Lyrics:  $\mu\iota$   $\mu\upsilon\upsilon\sigma\iota\delta$   $\nu\epsilon\omicron\sigma$

**System 2 (C. II.):**

- Vocal line:  $\rho\acute{\alpha}$   $\gamma\omicron\varsigma$   $\nu\epsilon\iota$   $\delta$   $\rho\acute{\alpha}$   $\delta\alpha\tau\alpha$   $\theta\alpha$  —  $\gamma\epsilon$

The score includes piano accompaniment for both systems, with various musical notations such as notes, rests, and dynamic markings.

-38-

Chorus

στη νε-α του εφο-δα

H

vou kai eufraà to-ψιθ τα- ni

Solo

ji kas apus ta ni na - oca ni à no cap- na àv Spa

-39-

Handwritten musical score for the first system, featuring a vocal line and piano accompaniment. The lyrics are "παι - παι".

Handwritten musical score for the second system, featuring a vocal line and piano accompaniment. The lyrics are "για μαμας πα παπια φρου κερα χωματα - μας".

Handwritten musical score for the third system, featuring a vocal line and piano accompaniment. The lyrics are "va fe pa sou airota st' t'wtoys protai kai tau - pio".

-40-

πρα --- αι ο πω --- βα θυκία πύλα πρωτα βραχ

Αρρι ο να θυτι ο να δε ρασηκη δωδεκατη χριτι σω ---

δια --- τη ηνωτη να ορ ηι συ κιν

-41-

αὐτὰ το - το πο κε νη. Νὰν δι σὺν δάφνι

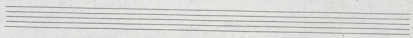
This system contains a vocal line in G major with lyrics "αὐτὰ το - το πο κε νη. Νὰν δι σὺν δάφνι". It is accompanied by two piano staves. The piano part features a rhythmic accompaniment with chords and some melodic fragments.

πὰν το τὸν - καὶ εὐλογοῦ τὸν Ἰωάν - νη ἵε - - - νη καὶ

This system continues the vocal line with lyrics "πὰν το τὸν - καὶ εὐλογοῦ τὸν Ἰωάν - νη ἵε - - - νη καὶ". The piano accompaniment continues with similar rhythmic patterns and chordal textures.

Ἄγιε ἰσχυρὸς ῥάβδω δεικνύτα πέρα ταύτη - δεικνύτα

This system contains the final part of the vocal line with lyrics "Ἄγιε ἰσχυρὸς ῥάβδω δεικνύτα πέρα ταύτη - δεικνύτα". The piano accompaniment concludes with sustained chords.



-42-

Handwritten musical score for voice and piano. The score is written on two systems, each with a vocal line and a piano accompaniment.

**System 1:**

- Voice:** The vocal line begins with a fermata and the syllable "vo". The lyrics are "Or pros paI Bana de vo pu ho".
- Piano:** The piano accompaniment consists of two staves. The right hand features a melodic line with eighth and sixteenth notes, while the left hand provides a harmonic accompaniment with chords and single notes.

**System 2:**

- Voice:** The vocal line continues with the lyrics "vaxos tou va vé Be s s".
- Piano:** The piano accompaniment continues with similar rhythmic patterns and chordal structures.

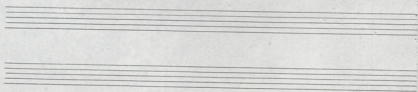
Below the second system, there are two sets of empty musical staves.

Vn. *p* — *Επιστρέψτε* *jo va mi te* *εσθ' εσ* — *va tou*

Ch.

Vn. *Επιστρέψτε* *αίτιι πάσι τιν* — *επιστρέψτε* *εσθ' εσ* *καίτε* *jo va* —

Ch.





Handwritten musical score for the first system. It features a vocal line with lyrics in Greek, a piano accompaniment, and a double bass line.

Vocal line: - va tu egi dou he an'to dai ka - on p'rohi x'epia mi ne

Piano accompaniment: Two staves showing chords and melodic lines.

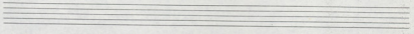
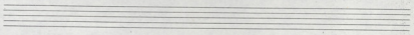
Double bass line: A single staff with a bass clef and notes.

Handwritten musical score for the second system. It features a vocal line with lyrics in Greek, a piano accompaniment, and a double bass line.

Vocal line: pa dia - gi a vas tra f'ne si - - - - -

Piano accompaniment: Two staves showing chords and melodic lines.

Double bass line: A single staff with a bass clef and notes.



Σ

-45-

Musical score for the first system. The vocal line (top staff) is in treble clef with a key signature of one sharp (F#) and a 3/4 time signature. It contains the lyrics "pios tve" and a dynamic marking "dim.". The piano accompaniment consists of two staves: the right hand in treble clef and the left hand in bass clef, both with a key signature of one sharp and a 3/4 time signature. The piano part features a complex rhythmic pattern with many beamed notes and rests.

Musical score for the second system. The vocal line (top staff) is in treble clef with a key signature of one sharp and a 3/4 time signature. It contains the lyrics "fa" and a dynamic marking "mf.". The piano accompaniment consists of two staves: the right hand in treble clef and the left hand in bass clef, both with a key signature of one sharp and a 3/4 time signature. The piano part features a complex rhythmic pattern with many beamed notes and rests.

