

(5)

Ἦμα δὲ γὰρ ἐν Ἀνατολῇ

πρὸς βοὴν δα τε ναὸν κὺ βουβῆτον ἤλιο να νω αἰτησῶ

CHORO

πρὸς βοὴν δα τε ναὸν κὺ βουβῆτον ἤλιο να νω

ἀνοτὸν κὺ βουβῆτον δὲ τε κὺ γηθεν ῥοδα του βο-

(2)

-25-

3

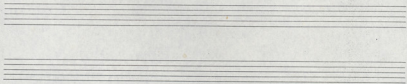
Dráson - pás m

ca. $\bar{7}$ wáſ de te kw éhnetá ſ vi tau éa

ca. $\bar{7}$ Diakróti ai ku

staccato

de trós nai évna - de éa pákora



-26-

I VOLTA.

II VOLTA



Handwritten musical score for the first system. It consists of four staves: a vocal line (treble clef), a piano line (treble clef), a guitar line (treble clef), and a bass line (bass clef). The lyrics are written below the vocal line.

Lyrics: *hos taua ve bei o ti jus -*

There is a circled musical symbol at the end of the first staff.

Handwritten musical score for the second system. It consists of four staves: a vocal line (treble clef), a piano line (treble clef), a guitar line (treble clef), and a bass line (bass clef). The lyrics are written below the vocal line.

Lyrics: *jo va ma te - en dos va tou epaite an tu - paio tu*

Two empty musical staves at the bottom of the page, consisting of five-line staves without any notation.

Handwritten musical score on aged paper, featuring two systems of music. Each system includes a vocal line (C.H.), a piano accompaniment (P.), and a grand staff (G.S.).

System 1:

- Vocal Line (C.H.):**

σπαρξτε εν δεσ μη κε- ο να να του θραξτε
- Piano Accompaniment (P.):**

Includes rhythmic notation with '+' signs and chordal structures.
- Grand Staff (G.S.):**

Contains the piano accompaniment for the first system.

System 2:

- Vocal Line (C.H.):**

αν' το- γαι να - Δε σραϊναι μηα κια ται να τα ο πο
- Piano Accompaniment (P.):**

Includes rhythmic notation with '+' signs and chordal structures.
- Grand Staff (G.S.):**

Contains the piano accompaniment for the second system.

Below the second system, there are two sets of empty musical staves.

2

-28-

Handwritten musical score on aged paper. The score consists of four systems of staves. The first system includes a vocal line with lyrics: "au ha + toi 28sp voi ha". The piano accompaniment is written in treble and bass clefs. The second system continues the vocal line with lyrics: "II volu +". The piano accompaniment continues with various chords and melodic lines. The third system continues the vocal line with lyrics: "III volu". The piano accompaniment continues. The fourth system continues the vocal line with lyrics: "IV volu". The piano accompaniment continues. The score is written in ink and shows signs of age, including some staining and a small mark at the top center.

H

-29-

Handwritten musical score for the first system, featuring three staves. The top staff is heavily scribbled out. The middle staff contains a melodic line with two sections labeled "I volta" and "II volta". The bottom staff contains a bass line with rhythmic notation and some vertical markings. A circled cross symbol is located below the first staff.

C F

Handwritten musical score for the second system, featuring three staves. The top staff contains a melodic line with the Greek lyrics "φοι ηου ετ προς α - ερ φια - ερ φια κη - ε τω". The middle staff contains a bass line with some scribbled-out passages. The bottom staff contains a bass line with rhythmic notation.

13

σε ης τα κω ται του εφ προς οη- προς υμν ψαλα-
 α.
 Em A-
 (4) ♯

του κωσ tu αι γε α εφ ψαλα κω
 Em Dm Em Dm Dm Em