

REEL 1

Είσοχων Ιωαννικά

ΤΙΤΛΟΙ

M3	Κάρος + ραδιάγωνο	53"	79
M4	Μοτίβο κουτιού	32"	48

REEL 1A

M5	Μοτίβο κουτιού στην κλασική	45"	68
M6	Μοτίβο Κάρου από κροσέδρο.	43"	65
M7	Μοτίβο κουτιού ζ' σημείων	10"	15

REEL 2

M8	Μοτίβο κουτιού τ' κουβαζάν	58,5"	88
M9	"Αγίτης στρατιωτικών ζουρισιών	34"	51

~~REEL 2A~~

M10	Μικρά είδη		00
	Μακρωχίος - καρτών	11"	17
	υ ζέτες	16,5"	25
	Τέλος κουσιχίτις	45"	68

REF 1

Mr. [Name] [Address]  
[City] [State] [Zip]

REF 2

Mr. [Name] [Address]  
[City] [State] [Zip]

Mr. [Name] [Address]  
[City] [State] [Zip]

Mr. [Name] [Address]  
[City] [State] [Zip]

M11	Ἐρευνας	1' 17"	116
M12	Μοτίβο καυτίου	7"	11
M13	Ἐρευνας		00
	Βάρβα Α'	20"	30
	Βάρβα Β'	1' 8"	102
	ΤΕΛΟΣ	1' 45"	157
M14	Μοτίβο καυτίου ἐνδεδωμένη	85"	13
M15	Πρώτος χορηγισμὸς ἀναλκασίας	34"	51
M16	Ἄδυνα κίνηση soule bennis		
	ὑπενδύριον - μέχρι ὑποταξίᾳ	26,5"	40
M17	Μετακίνη soule	11"	17
M18	Μοτίβο ἐρευνῶν	26,5"	40
M19	Μοτίβο κίχου προεξαφασμένη γιά		
	ἔννοιο εὐτό		00
	ἔννοιο ἀρχή	11"	17
	ΤΕΛΟΣ	1' 34"	141
M20	Ἐπιβαρύνω α. εἰσοδοῦ.		

REF 1

Mr. [Name] [Address]  
[City] [State] [Zip]

REF 2

Mr. [Name] [Address]  
[City] [State] [Zip]

Mr. [Name] [Address]  
[City] [State] [Zip]

Mr. [Name] [Address]  
[City] [State] [Zip]

M21	Εμβασιπιο		
M22	Εισαγωγή JET		00
	Θάλα	10,5"	16
	ΤΕΛΟΣ	49"	74
M23	JET		
M24	JET		
M25	Εμβασιπιο	58"	87
M26	JET <sup>(καμινάδα)</sup> εισαγωγή συνδεσμοί υδραυλ	33"	50
M27	Μοτίβο ναυτιοί φύλας υδραυλ		
	φωταγία	28"	42
M28	Κάβουι φέρει - ναυτιοί υδραυλ		
	Sonic-beam-υδραυλ	14,5"	22
M29	Ραδιόφωνο	2' 16"	205
M30	JET ούρι υδραυλ	1' 47"	161
M31	Sonic beam-ούρι υδραυλ		
	Εισαγωγή ούρι JET, φέρει		
	Sonic-beam	1' 10"	106

REF 1

Mr. [Name] [Address]  
[City] [State] [Zip]

REF 2

Mr. [Name] [Address]  
[City] [State] [Zip]

Mr. [Name] [Address]  
[City] [State] [Zip]

Mr. [Name] [Address]  
[City] [State] [Zip]

M 32	Sonic Boom	34.5"	52
M 33	Korego	18"	27
M 34	Sonic Boom FIN.		

REF 1

Mr. [Name] [Address]  
[City] [State] [Zip]

REF 2

Mr. [Name] [Address]  
[City] [State] [Zip]

Mr. [Name] [Address]  
[City] [State] [Zip]

Mr. [Name] [Address]  
[City] [State] [Zip]



"THE FISH"

A = σεξιάτ. 5

B = σεξιάτ

T = Τοξίνες σπυρίδ

Εισαγωγή Ισλαμικό

1' 53"

ΤΙΤΛΟΙ

M3	Κάρος + ραδιόφωνο ✓	A	53"
M4	Μοζιβό μαντιλιού ✓	B	33"
M4A	Κάρος (A)		30"
M5	Μοζιβό μαντιλιού στην κατοικία	(B) (A)	45"
M6	Μοζιβό Κάρο - από πρόεδρο		43" νυκτερινή
M7	Μοζιβό μαντιλιού - ζέση μόνον		10"
M8	Μοζιβό μαντιλιού - ζέση κουβαλών		58,5"
M9	"Αγία σφραγισμένων ζουριών		34" ΚΑΡΟΣ + ΤΟΥΡΙΣΤΟΣ
M10	Νικοχάιδι		
	Μανιλιός - κάρνα		11" ΣΚΑΡΟΣ
	" ζέση		16,5" (γέφυρα)
	Τέλος φουσιών		45"
M11	"Έρευνες		30" + 1' 17"
M12	Μοζιβό μαντιλιού		4" (B)
M13	"Έρευνες	(A+B) (17 σπυρίδ)	
	Βότβα A'		20"
	Βότβα B'		1' 8"
	ΤΕΛΟΣ		1' 45"

THE FISH

4-22-21  
 12-22-21  
 To the ...

Erpophis ...  
 12-22-21

M/10	Erpophis ...	12-22-21
M/9	Erpophis ...	12-22-21
M/8	Erpophis ...	12-22-21
M/7	Erpophis ...	12-22-21
M/6	Erpophis ...	12-22-21
M/5	Erpophis ...	12-22-21
M/4	Erpophis ...	12-22-21
M/3	Erpophis ...	12-22-21
M/2	Erpophis ...	12-22-21
M/1	Erpophis ...	12-22-21
M/10	Erpophis ...	12-22-21
M/9	Erpophis ...	12-22-21
M/8	Erpophis ...	12-22-21
M/7	Erpophis ...	12-22-21
M/6	Erpophis ...	12-22-21
M/5	Erpophis ...	12-22-21
M/4	Erpophis ...	12-22-21
M/3	Erpophis ...	12-22-21
M/2	Erpophis ...	12-22-21
M/1	Erpophis ...	12-22-21

12-22-21  
 12-22-21  
 12-22-21

12-22-21  
 12-22-21  
 12-22-21

M 14 Μοζιβό κούτιοῦ ἐνδοκοιλίαι

$8,5'' \frac{A+B}{\Gamma\Delta} 6$

M 15 Πρώτος ζευγισμένος αναθεωρητής

(T) 34''

M 16 Ἄθυνα - υἱνοῖς sonic βλαβῶν (T)

Ἰσοενδιφνοῖς πέχρη ὑπό ζευγιστοῦ 26,5''

M 17  
Mia kōna

Περαταῖς sonic (T)

~~1,22''~~

M 18 Μοζιβό ἐρευνητῶν (πρὸ πηχαιρίσματος)

26,5''

M 19 Μοζιβό κάρου υποκατασκευῆς

Ἐνζονοσ ἐυθής

Ἐνζονοσ ἀρχῆ

11''

ΤΕΛΟΣ

1' 34''

M 20 Ἐρβαριόριο α' εἰσοβογῆ

M 21 Ἐρβαριόριο β' εἰσοβογῆ

M 22 Εἰσοβογῆ JET

Θέτα

ΤΕΛΟΣ

10,5''

49''

M 23 JET

M 24 JET

4+8  
33  
17

Mrs. H. H. ...

Mrs. H. H. ...

Mrs. H. H. ...

Mrs. H. H. ...

Mrs. H. H. ...

Mrs. H. H. ...

Mrs. H. H. ...

Mrs. H. H. ...

Mrs. H. H. ...

Mrs. H. H. ...

Mrs. H. H. ...

Mrs. H. H. ...

Mrs. H. H. ...

Mrs. H. H. ...

Mrs. H. H. ...

Mrs. H. H. ...

Mrs. H. H. ...

102  
49

- M 25 Έφβαρίριο
- M 26 JET παραγὰι ποικυμίν  
γιὰ συνές κέρου 33"
- M 27 Μορίβο νοτιού φύις  
ωέρνει φωνκάγια 28"
- M 27A 4. Κοντάου \_\_\_\_\_ 10"
- M 28 Κάνου φείγει - νοτι' άνοίγει  
Sonic-beam - υφείνερο 14,5"
- M 29 Ραδιένεργμα 2' 16"
- M 30 JET σίν ηγάρτια 1' 47"
- M 31 Sonic beam - ούι σωγίνας  
Εισαγωγή πυθός JET, φέ  
βρίου Sonic-beam 1' 10"
- M 32 Sonic beam 34"
- M 33 Κότερο 18"
- M 34 Sonic beam FIN.

M 25	28"	LET	LET
M 26	33"	LET	LET
M 27	38"	LET	LET
M 28	43"	LET	LET
M 29	48"	LET	LET
M 30	53"	LET	LET
M 31	58"	LET	LET
M 32	63"	LET	LET
M 33	68"	LET	LET
M 34	73"	LET	LET
M 35	78"	LET	LET
M 36	83"	LET	LET
M 37	88"	LET	LET
M 38	93"	LET	LET
M 39	98"	LET	LET
M 40	103"	LET	LET
M 41	108"	LET	LET
M 42	113"	LET	LET
M 43	118"	LET	LET
M 44	123"	LET	LET
M 45	128"	LET	LET
M 46	133"	LET	LET
M 47	138"	LET	LET
M 48	143"	LET	LET
M 49	148"	LET	LET
M 50	153"	LET	LET
M 51	158"	LET	LET
M 52	163"	LET	LET
M 53	168"	LET	LET
M 54	173"	LET	LET
M 55	178"	LET	LET
M 56	183"	LET	LET
M 57	188"	LET	LET
M 58	193"	LET	LET
M 59	198"	LET	LET
M 60	203"	LET	LET

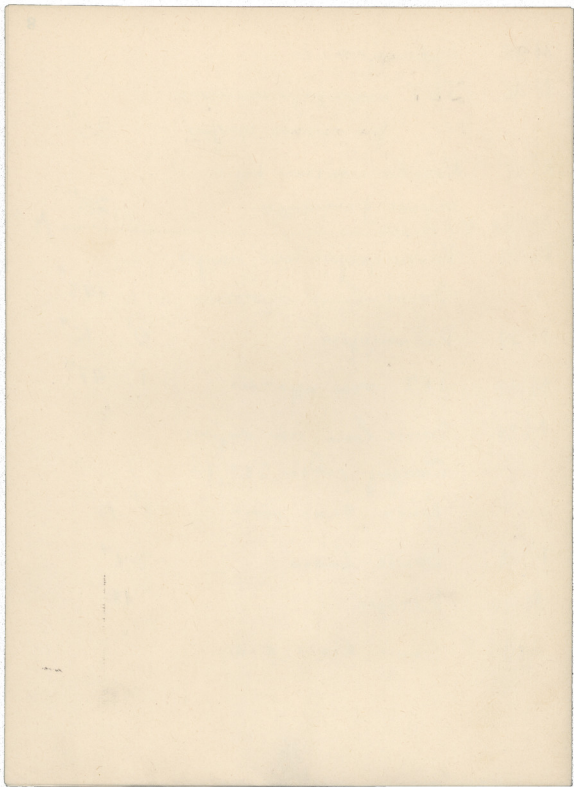
40000  
87 4/100

T. 100 4/100  
1 53

Εργασία

Τίτλοι

M3	Καλαμάρι + γαρίδα	A	53"	
M4	Μαύλο κουνιά	B	33"	
M4A	Εύρη	(B)	30"	
M5	Μαύλο κουνιά ομαλότητα		45"	(B) (A)
M6	Μαύλο Καραβίδα - κίτρινα		43"	10000
M7	Μαύλο κουνιά - κουνιά		40"	2000
M8	Μαύλο κουνιά - κουνιά		585"	1000
M9	Κίτρινη ομαλότητα κουνιά		34"	ΚΑΡΩΤ 10000
M10	Παλαμίδα			
	Μαύλο - κουνιά		11"	10000
	κουνιά		45"	(B)
	Τέτα ομαλότητα		45"	
M11	Εύρη		30" + 17"	
M12	Μαύλο κουνιά		9"	(B)
M13	Εύρη	(A) (B)	(10000)	
	Βίβλος Α		20"	
	Βίβλος Β		1"	
	κουνιά		1"	






12

2  
 |  $\overline{\text{L}} > \overline{\text{L}} > > \overline{\text{L}} \overline{\text{L}} > \quad | > \overline{\text{L}} > \overline{\text{L}} \overline{\text{L}} > \underline{\underline{\text{U}}}$  |

|  $\overline{\underline{\underline{\text{U}}}} \dot{\text{L}} > \underline{\underline{\text{U}}} \quad | \underline{\underline{\text{U}}} \quad | > \overline{\text{L}} > \underline{\underline{\text{U}}} \dot{\text{L}} > \underline{\underline{\text{U}}}$  |

|  $\overline{\text{L}} > \overline{\text{L}} > > \overline{\text{L}} \overline{\text{L}} > \quad | > \overline{\text{L}} > \overline{\text{L}} \overline{\text{L}} > \underline{\underline{\text{U}}}$  |

|  $\overline{\underline{\underline{\text{U}}}} \overline{\text{L}} > \underline{\underline{\text{U}}} \quad | \underline{\underline{\text{U}}} \quad | > \overline{\text{L}} \quad | \underline{\underline{\text{U}}}$  |

Bina  


(5)

Handwritten text in a cursive script, possibly a list or account, with several lines of writing.

Handwritten text in a cursive script, appearing to be a continuation of the list or account.

Handwritten text in a cursive script, continuing the list or account.

Handwritten text in a cursive script, possibly concluding the list or account.

1 2 3 4

230-251

10

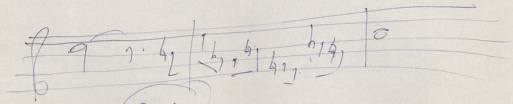
557  
413.523

Handwritten musical score on three staves. The top staff has a treble clef and contains rhythmic notation with stems and beams, and the word "Bourne" written below it. The middle staff has a treble clef and contains rhythmic notation with stems and beams. The bottom staff has a bass clef and contains rhythmic notation with stems and beams. Above the staves are various markings including brackets and numbers.

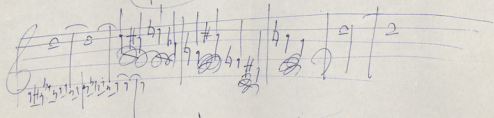
ל > ל > ל > ל > ל > | > ל > ל > ל > ל > | > ל > ל > ל > | > ל > ל > ל > | >

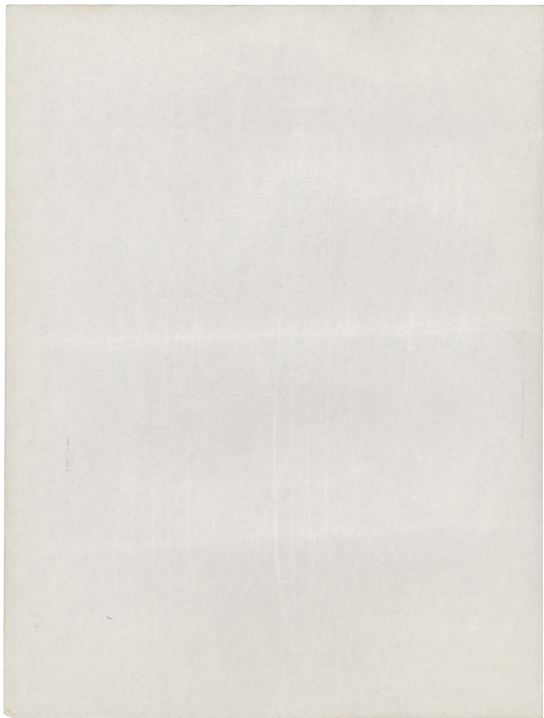
ל > ל > ל > ל > | > ל > ל > ל > ל > |  
| > ל > ל > ל > ל > |

Boon  
)

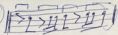


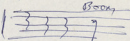
Boom

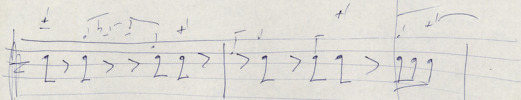


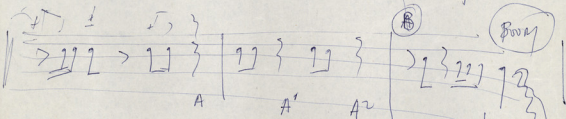


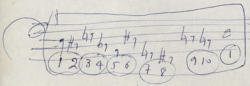
# Some Boopy

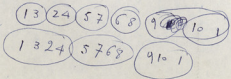
(A) 

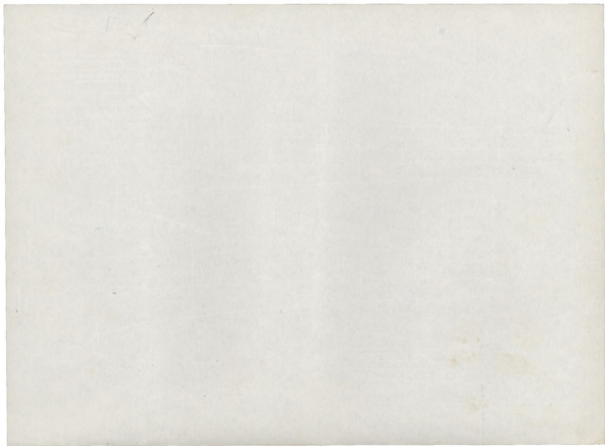
(B) 













FEDERATION OF NATIONAL UNIONS  
OF CYPRIOT STUDENTS (F.N.U.C.S.)

INTERNATIONAL STUDENT SEMINAR

"CYPRUS THROUGH THE AGES"

28th September, 1964.

PROGRAMME

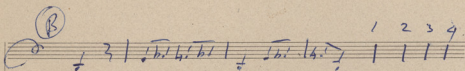
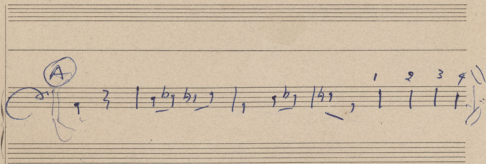
MORNING SESSION: 10 a.m.

- 1) Addresses.
- 2) History of Cyprus; relations of Cyprus with Hellenism.  
Speech delivered by the Director of Greek Education  
Mr. Kleonthis Georghlades.
- 3) "Archaeology of Cyprus"  
Speech by the Director of Antiquities Dr. Vassos Karageorgis.

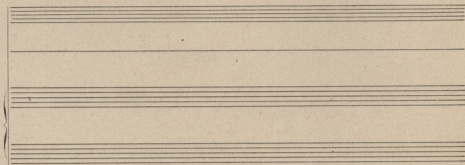
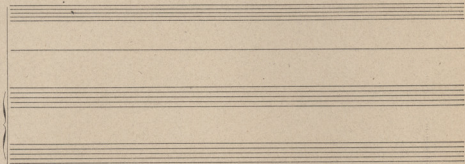
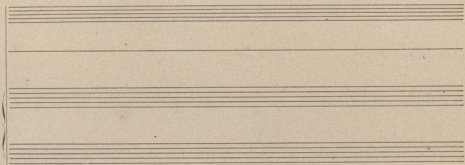
AFTERNOON SESSION: 5 p.m.

- 1) Addresses.
- 2) "The present political situation in Cyprus".  
A speech by H.E. The President of the House of  
Representatives Mr. Glafkos Clerides.
- 3) "Greeks and Turks in Cyprus; their peaceful coexistence".  
A speech by Mr. Chr. Veniamin, Limassol District Officer  
and Dr. Ihsen Ali, a Turkish Cypriot Politician.





OTANTA YAPA...



STAVTA VAPIA... ΦΙΛΗ  
1966

36

(A)

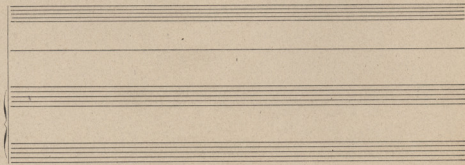
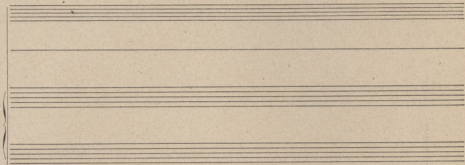
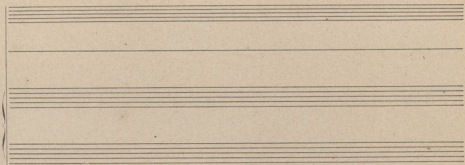
Handwritten musical notation for section A. It consists of two staves. The top staff begins with a treble clef, a key signature of one flat (B-flat), and a 4/4 time signature. The melody is written in eighth and quarter notes, ending with a double bar line and a repeat sign. The bottom staff begins with a bass clef and contains a few notes, likely a bass line.

(B)

Handwritten musical notation for section B. It consists of two staves. The top staff begins with a treble clef, a key signature of one flat (B-flat), and a 4/4 time signature. The melody features a series of eighth and quarter notes, with some slurs and accents. Above the staff, the numbers 1 2 3 4 are written above the first four measures. The bottom staff begins with a bass clef and contains notes with slurs and accents, corresponding to the top staff.

(Γ)

Handwritten musical notation for section Gamma. It consists of two staves. The top staff begins with a treble clef, a key signature of one flat (B-flat), and a 4/4 time signature. The melody is written in eighth and quarter notes, ending with a double bar line and a repeat sign. The bottom staff is mostly blank, with some faint notes visible.



# THE FISH

## SPANISH INTRODUCTION

THEODORAMIS

16

LA SW YOU CAN'T YOU CAN'T YOU CAN'T YOU CAN'T BE

SURE YOU CAN'T YOU CAN'T YOU CAN'T YOU CAN'T BE

SURE WHERE THE BANDS FELL BE SURE ~~FELL BE~~ THE

~~FELL~~ BANDS FELL BE FELL AND

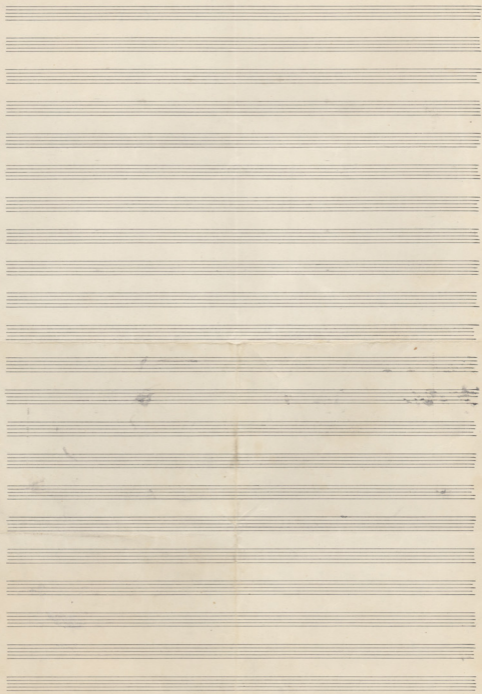
WHERE AND WHEN THEY'LL FALL A GAIN AND

WHERE AND WHEN THEY'LL FALL A GAIN

BUT ONE THING IS ~~THE~~ A-B-S-O-L-U-TELY PLAIN

THE NEXT TIME IT'S UN LI KELY TO BE SPAIN

LA





M<sup>3</sup>  
 (AB)

Handwritten musical score for the first system, consisting of five staves. The top staff is in treble clef with a 3/8 time signature. The second and third staves are in alto clef. The fourth and fifth staves are in bass clef. The notation includes various rhythmic values, beams, and dynamic markings.

*Kontr*

Handwritten musical score for the second system, consisting of two staves. The top staff is in treble clef with a 3/8 time signature. The bottom staff is in bass clef. The notation includes various rhythmic values, beams, and dynamic markings.

(D)

*Andante*

Handwritten musical score for the third system, consisting of three staves. The top staff is in treble clef with a 3/8 time signature. The middle and bottom staves are in bass clef. The notation includes various rhythmic values, beams, and dynamic markings.

♩ g<sup>2</sup>g<sup>1</sup>, 7 II. g<sup>2</sup>g<sup>1</sup>, h<sup>2</sup>g<sup>1</sup>, II  
ca ca ad

♩ g<sup>2</sup>g<sup>1</sup> g<sup>2</sup>g<sup>1</sup> g<sup>2</sup>g<sup>1</sup> g<sup>2</sup>g<sup>1</sup> | | | |  
b<sub>1</sub> b<sub>2</sub> b<sub>3</sub> b<sub>4</sub> | b<sub>1</sub> b<sub>2</sub> | b<sub>1</sub> b<sub>2</sub> | b<sub>1</sub> b<sub>2</sub> |

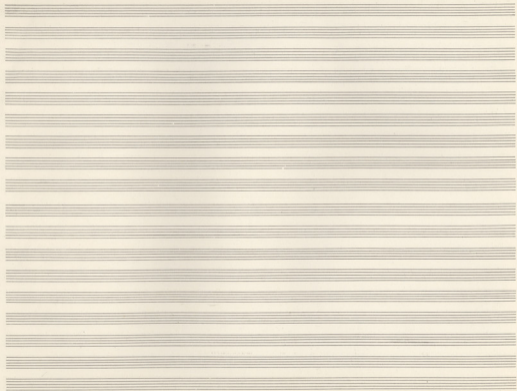
♩ b<sub>1</sub> b<sub>2</sub>, b<sub>1</sub> b<sub>2</sub>, b<sub>1</sub> b<sub>2</sub> | b<sub>1</sub> b<sub>2</sub>, b<sub>1</sub> b<sub>2</sub>, b<sub>1</sub> b<sub>2</sub> | b<sub>1</sub> b<sub>2</sub>, b<sub>1</sub> b<sub>2</sub>, b<sub>1</sub> b<sub>2</sub> | b<sub>1</sub> b<sub>2</sub>, b<sub>1</sub> b<sub>2</sub>, b<sub>1</sub> b<sub>2</sub> |

h<sub>1</sub> h<sub>2</sub>, h<sub>1</sub> h<sub>2</sub>      g<sup>2</sup>g<sup>1</sup> g<sup>2</sup>g<sup>1</sup> g<sup>2</sup>g<sup>1</sup> g<sup>2</sup>g<sup>1</sup>      III  
g<sup>2</sup>g<sup>1</sup> g<sup>2</sup>g<sup>1</sup> g<sup>2</sup>g<sup>1</sup> g<sup>2</sup>g<sup>1</sup>      III

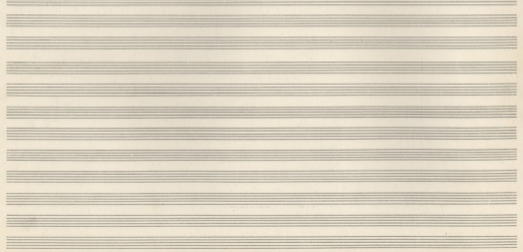
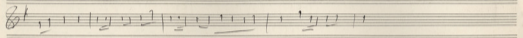
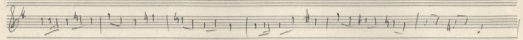
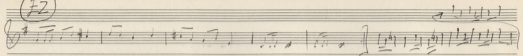
♩ g<sup>2</sup>g<sup>1</sup> : : g<sup>2</sup>g<sup>1</sup> : : g<sup>2</sup>g<sup>1</sup> : : g<sup>2</sup>g<sup>1</sup> : : g<sup>2</sup>g<sup>1</sup> : : g<sup>2</sup>g<sup>1</sup> : : g<sup>2</sup>g<sup>1</sup> : : g<sup>2</sup>g<sup>1</sup> : : g<sup>2</sup>g<sup>1</sup> : :

♩ g<sup>2</sup>g<sup>1</sup> g<sup>2</sup>g<sup>1</sup> g<sup>2</sup>g<sup>1</sup> g<sup>2</sup>g<sup>1</sup>

2 Bassoon  
2 Clarinet  
Alto (Mell.)  
2 Horn  
2 Trumpet  
2 Trombone



(F2)

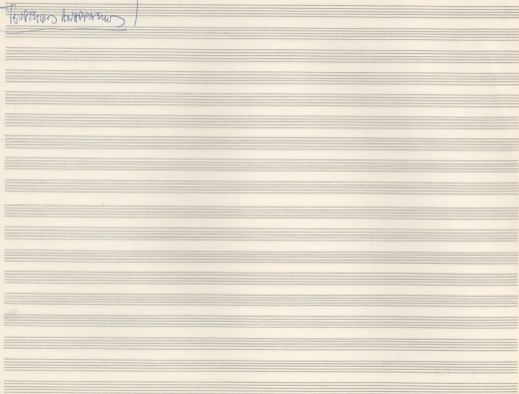


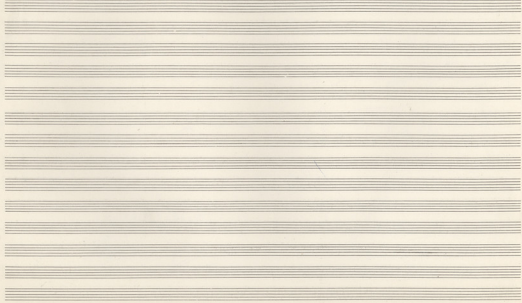
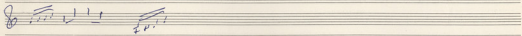
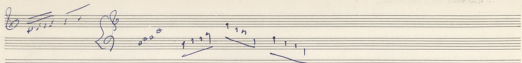
HO

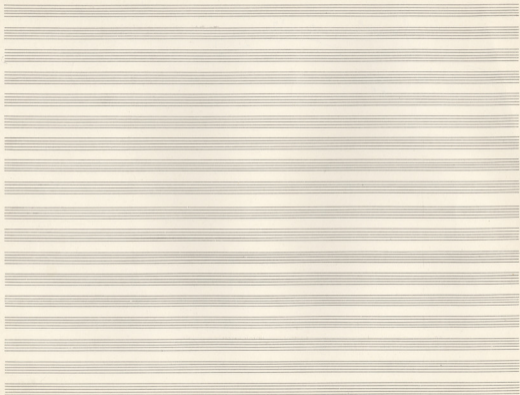
W  
W

The image shows a handwritten musical score on ten staves. The top two staves are crossed out with a large blue 'X'. The score includes various musical notations such as treble and bass clefs, time signatures, notes, rests, and dynamic markings. A circled 'HO' is on the left, and 'W W' is at the bottom left. A blue arrow points from the top right towards the bottom right.

Handwritten text in a box, possibly a title or name, written in a cursive script.









Handwritten musical notation for the first system, featuring a treble clef and a bass clef. The treble staff contains a melodic line with notes and rests, and the bass staff contains a bass line with notes and rests. The word "Lilium" is written in the treble staff.

Handwritten musical notation for the second system, featuring a treble clef and a bass clef. The treble staff contains a melodic line with notes and rests, and the bass staff contains a bass line with notes and rests.

Handwritten musical notation for the third system, featuring a treble clef and a bass clef. The treble staff contains a melodic line with notes and rests, and the bass staff contains a bass line with notes and rests.

Handwritten musical notation for the fourth system, featuring a treble clef and a bass clef. The treble staff contains a melodic line with notes and rests, and the bass staff contains a bass line with notes and rests.

Handwritten musical notation for the fifth system, featuring a treble clef and a bass clef. The treble staff contains a melodic line with notes and rests, and the bass staff contains a bass line with notes and rests.

Handwritten musical notation for the sixth system, featuring a treble clef and a bass clef. The treble staff contains a melodic line with notes and rests, and the bass staff contains a bass line with notes and rests.

Handwritten musical notation on a grand staff. The right hand (treble clef) contains a sequence of notes: quarter notes G4, A4, B4, C5, followed by eighth notes G4, A4, B4, C5, D5, E5, F5, G5. The left hand (bass clef) is empty.

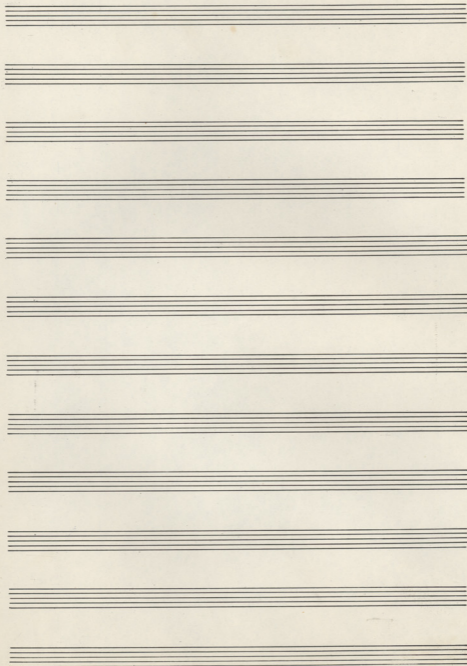
Handwritten musical notation on a grand staff. The right hand contains eighth notes G4, A4, B4, C5, D5, E5, F5, G5. The left hand contains a sequence of notes: quarter notes G3, A3, B3, C4, D4, E4, F4, G4, with some notes marked with a plus sign.

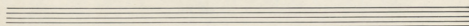
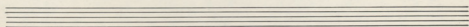
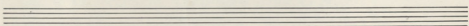
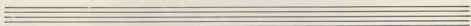
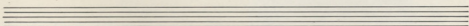
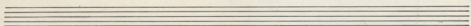
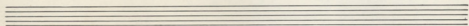
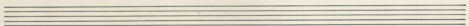
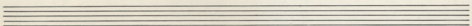
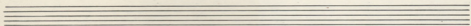
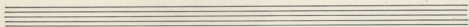
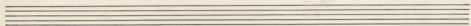
Handwritten musical notation on a grand staff. The right hand contains quarter notes G4, A4, B4, C5. The left hand contains quarter notes G3, A3, B3, C4, D4, E4, F4, G4, with some notes marked with a plus sign.

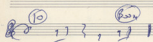
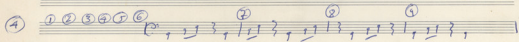
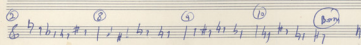
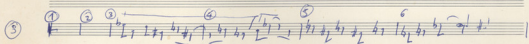
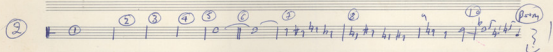
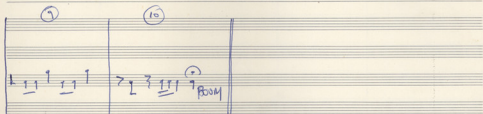
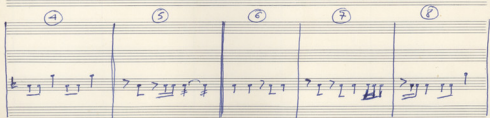
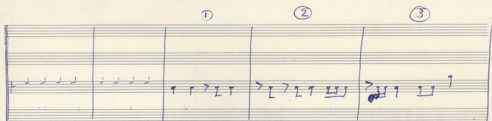
Handwritten musical notation on a grand staff. The right hand contains quarter notes G4, A4, B4, C5. The left hand contains quarter notes G3, A3, B3, C4, D4, E4, F4, G4, with some notes marked with a plus sign.

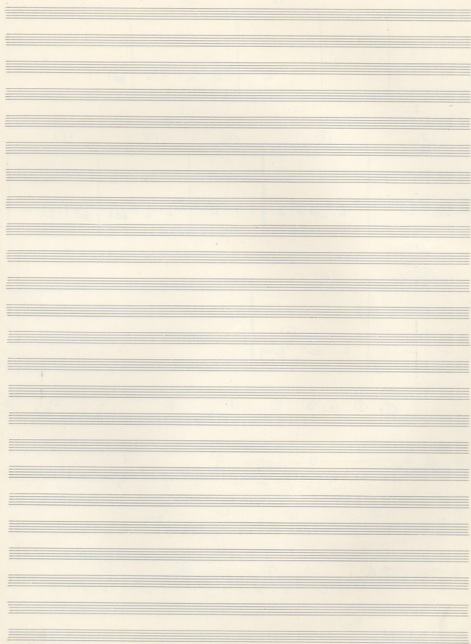
Handwritten musical notation on a grand staff. The right hand contains quarter notes G4, A4, B4, C5. The left hand contains quarter notes G3, A3, B3, C4, D4, E4, F4, G4, with some notes marked with a plus sign.

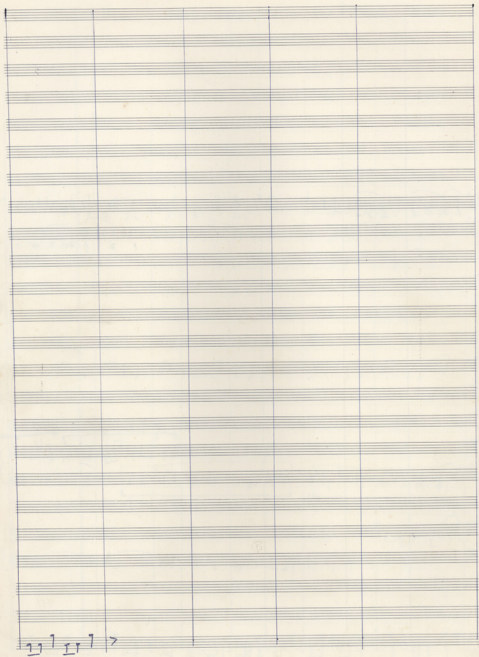
Handwritten musical notation on a grand staff. The right hand contains quarter notes G4, A4, B4, C5. The left hand contains quarter notes G3, A3, B3, C4, D4, E4, F4, G4, with some notes marked with a plus sign.











⑥  $\begin{array}{c} \text{p} \quad \text{p} \\ \text{1 2 3 4} \quad \text{1 2 3 4} \end{array}$   $\begin{array}{c} \text{1} \#1 \flat 1 \flat 1 \\ \flat 1 \#1 \flat 1 \#1 \\ \flat 1 \flat 1 \text{ 1} \#1 \flat 1 \flat 1 \text{ 1} \#1 \end{array}$   $\begin{array}{c} \text{p} \\ \text{1} \quad \text{2} \quad \text{1 2 3 4} \end{array}$

⑤

④

③  $\begin{array}{c} \text{A} \quad \text{K} \\ \text{1} \#1 \flat 1 \#1 \flat 1 \text{ 1} \#1 \end{array}$

②

①  $\begin{array}{c} \text{1} \#1 \flat 1 \#1 \flat 1 \text{ 1} \#1 \end{array}$



Handwritten musical notation for the first system, featuring a grand staff with treble and bass clefs. The music includes notes with accidentals (sharps and flats) and fingerings (1, 2, 3, 4). A bracket groups the first two measures, and another bracket groups the last two measures. The notation is dense with notes and stems.

5

4

3

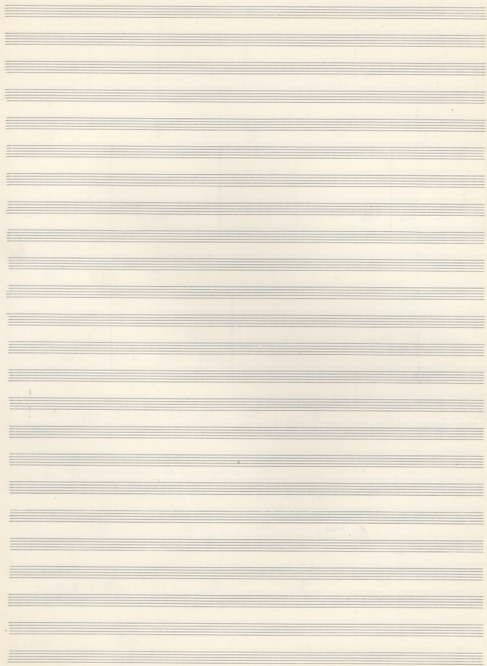
2

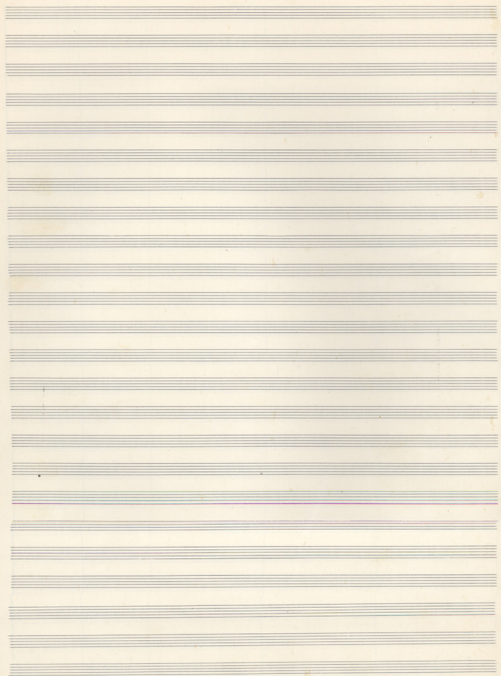
Handwritten musical notation for the second system, featuring a grand staff with treble and bass clefs. The music includes notes with accidentals (sharps and flats) and fingerings (1, 2, 3, 4). A bracket groups the first two measures, and another bracket groups the last two measures. The notation is dense with notes and stems.

B. 3004

U

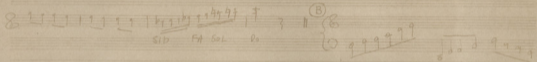
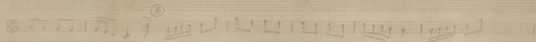
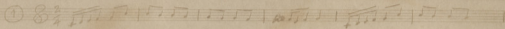
This image shows a page of aged, cream-colored musical manuscript paper. The page is ruled with 20 horizontal staves, each consisting of five lines. The staves are arranged in a grid, with vertical lines separating them into four equal-width columns. The paper shows signs of age, including some light brown staining and foxing, particularly in the lower half. At the bottom of the page, the final staff contains handwritten musical notation in blue ink. The notation consists of a series of vertical stems and horizontal lines, resembling a rhythmic or melodic sequence. The notation is written in a style that is somewhat shorthand or shorthand-like, with some stems having small flags or beams. The notation is positioned in the lower half of the page, spanning across the four columns.



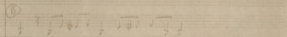
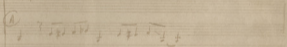


МІХАИЛ КАСПІАНОВИЧ  
II МЕРА ПОУ БА ВІСНІ ТА ЦАРА

Міхал Каспiанович



Міхалович





Handwritten text at the top center, possibly a title or reference number.

Handwritten text at the top right.

① 8 9 10 11 12 13 14 15 16 17 18 19 20 21 22 23 24 25 26 27 28 29 30 31 32 33 34 35 36 37 38 39 40 41 42 43 44 45 46 47 48 49 50 51 52 53 54 55 56 57 58 59 60 61 62 63 64 65 66 67 68 69 70 71 72 73 74 75 76 77 78 79 80 81 82 83 84 85 86 87 88 89 90 91 92 93 94 95 96 97 98 99 100

② 1 2 3 4 5 6 7 8 9 10 11 12 13 14 15 16 17 18 19 20 21 22 23 24 25 26 27 28 29 30 31 32 33 34 35 36 37 38 39 40 41 42 43 44 45 46 47 48 49 50 51 52 53 54 55 56 57 58 59 60 61 62 63 64 65 66 67 68 69 70 71 72 73 74 75 76 77 78 79 80 81 82 83 84 85 86 87 88 89 90 91 92 93 94 95 96 97 98 99 100

③ 1 2 3 4 5 6 7 8 9 10 11 12 13 14 15 16 17 18 19 20 21 22 23 24 25 26 27 28 29 30 31 32 33 34 35 36 37 38 39 40 41 42 43 44 45 46 47 48 49 50 51 52 53 54 55 56 57 58 59 60 61 62 63 64 65 66 67 68 69 70 71 72 73 74 75 76 77 78 79 80 81 82 83 84 85 86 87 88 89 90 91 92 93 94 95 96 97 98 99 100

④ 1 2 3 4 5 6 7 8 9 10 11 12 13 14 15 16 17 18 19 20 21 22 23 24 25 26 27 28 29 30 31 32 33 34 35 36 37 38 39 40 41 42 43 44 45 46 47 48 49 50 51 52 53 54 55 56 57 58 59 60 61 62 63 64 65 66 67 68 69 70 71 72 73 74 75 76 77 78 79 80 81 82 83 84 85 86 87 88 89 90 91 92 93 94 95 96 97 98 99 100

8 9 10 11 12 13 14 15 16 17 18 19 20 21 22 23 24 25 26 27 28 29 30 31 32 33 34 35 36 37 38 39 40 41 42 43 44 45 46 47 48 49 50 51 52 53 54 55 56 57 58 59 60 61 62 63 64 65 66 67 68 69 70 71 72 73 74 75 76 77 78 79 80 81 82 83 84 85 86 87 88 89 90 91 92 93 94 95 96 97 98 99 100

6 7 8 9 10 11 12 13 14 15 16 17 18 19 20 21 22 23 24 25 26 27 28 29 30 31 32 33 34 35 36 37 38 39 40 41 42 43 44 45 46 47 48 49 50 51 52 53 54 55 56 57 58 59 60 61 62 63 64 65 66 67 68 69 70 71 72 73 74 75 76 77 78 79 80 81 82 83 84 85 86 87 88 89 90 91 92 93 94 95 96 97 98 99 100

Handwritten musical notation on the right side of the page, including notes and stems.





ארבעה ימים  
 ארבעה ימים



③  $\frac{8}{4}$   $\text{Sol}^{\text{pedal}}$   $\text{2.}$

④  $\frac{3}{4}$

Sol Do Sol Do Sol RE Do Sa RE Sol

⑤  $\text{Sol}$   $\text{po}$   $\text{Incl}$   $\text{A}$

$\text{Do}$   $\text{Do}$   $\text{Sol}$   $\text{La}$   $\text{RE}$   $\text{Sa}$   $\text{Do}$   $\text{Sol}$   $\text{Sol}$   $\text{RE}$   $\text{Sol}$   $\text{8}$

⑥  $\text{7}$





3	2	1
2	3	1
2	1	3
1	2	3
3	1	2

④

⑬ Pedal  $\text{C}$   $\text{B}$   $\text{I}$  K. 40

⑭ Flauto  $\text{C}$   $\text{B}$   $\text{I}$

⑮  $\text{C}$   $\text{B}$   $\text{I}$

⑯  $\text{C}$   $\text{B}$   $\text{I}$

⑰  $\text{C}$   $\text{B}$   $\text{I}$

⑱  $\text{C}$   $\text{B}$   $\text{I}$  K. 40

