

1 2 3 4 5 6

7 8 9 10 11 12 13 14

15 16 17 18 19 20 21 22 23 24 25

26 27 28 29 30 31 32

Bois Vcl/pa 30

38 37 36 35 34 33

Handwritten musical score, measures 1-26. The score is divided into three sections labeled 1, 2, and 3. It features multiple staves with complex rhythmic notation, including many sixteenth and thirty-second notes, and various rests. The notation is dense and includes many slurs and ties.

Handwritten musical score, measures 27-35. This section continues the complex rhythmic patterns from the previous section, with measures 27, 28, 30, 31, 32, 33, 34, and 35. The notation remains dense with many sixteenth and thirty-second notes, and includes various rests and slurs.

Handwritten musical score, measures 35-36. Includes a circled red stamp that says "RAVEL".

Handwritten musical score, measures 37-38.

Handwritten musical score, measures 39-40.

Handwritten musical score, measures 41-42.

Handwritten musical score, measures 43-44.

Handwritten musical score, measures 45-46. Includes a section labeled "Vc".

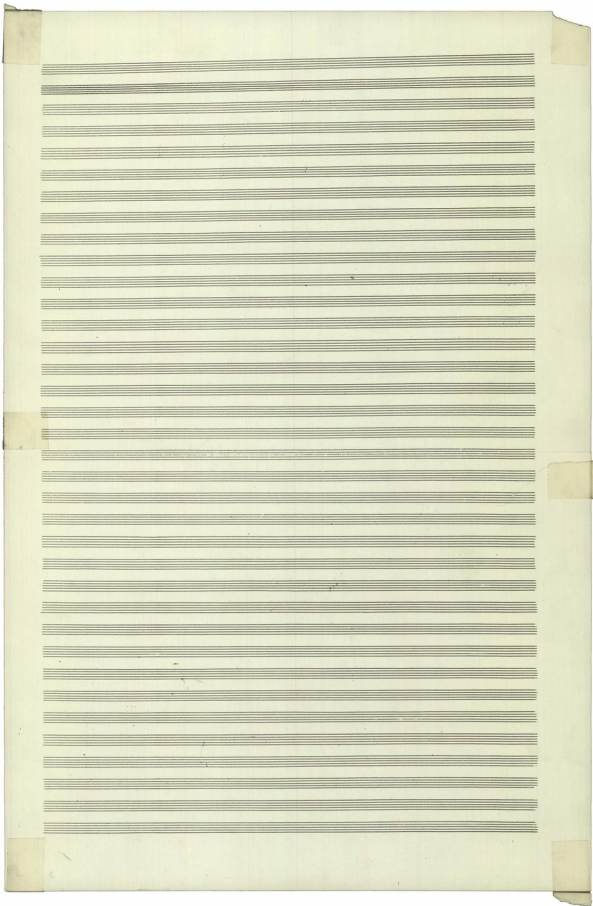
~~RAVEN~~

117

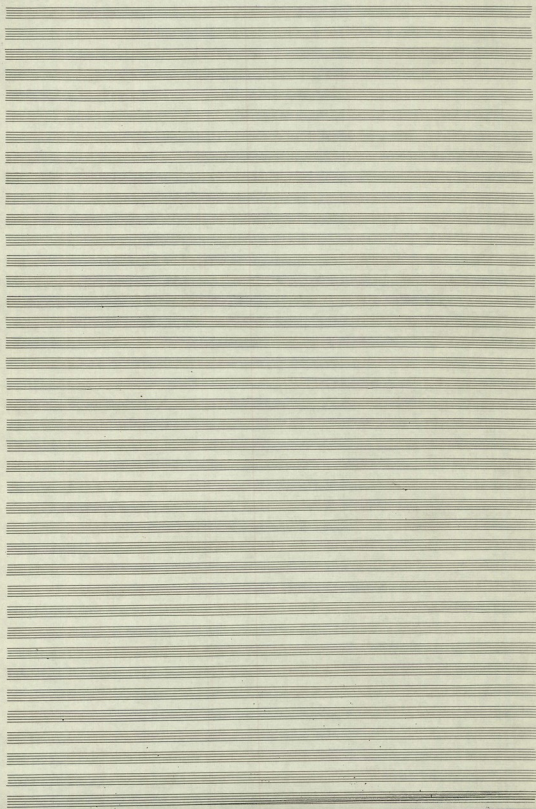
The first system of the handwritten musical score consists of two staves. The upper staff is a treble clef staff with a key signature of one sharp (F#) and a common time signature (C). It contains several measures of music, including a half note, a quarter note, and a dotted quarter note. The lower staff is a bass clef staff with a key signature of one sharp (F#) and a common time signature (C). It contains several measures of music, including a half note, a quarter note, and a dotted quarter note. The word "RAVEN" is written in red ink above the upper staff and is crossed out with a red diagonal line.

The lower portion of the page contains a series of empty musical staves. On the left side, there are several staves with handwritten notes and clefs, including a treble clef, a bass clef, and a common time signature. The rest of the page is blank.





② FA SA PA SA FA FA (A) → ③





RAVON

Handwritten musical notation on a single staff, featuring a treble clef and a series of rhythmic markings and notes.

Handwritten musical notation on a single staff, featuring a treble clef and a series of rhythmic markings and notes.

Handwritten musical notation on a single staff, featuring a treble clef, a key signature of one sharp (F#), and a series of notes and rests. A circled annotation "A9A" is present.

Handwritten musical notation on a single staff, featuring a treble clef and a series of rhythmic markings and notes.

Handwritten musical notation on a single staff, featuring a treble clef and a series of notes and rests.

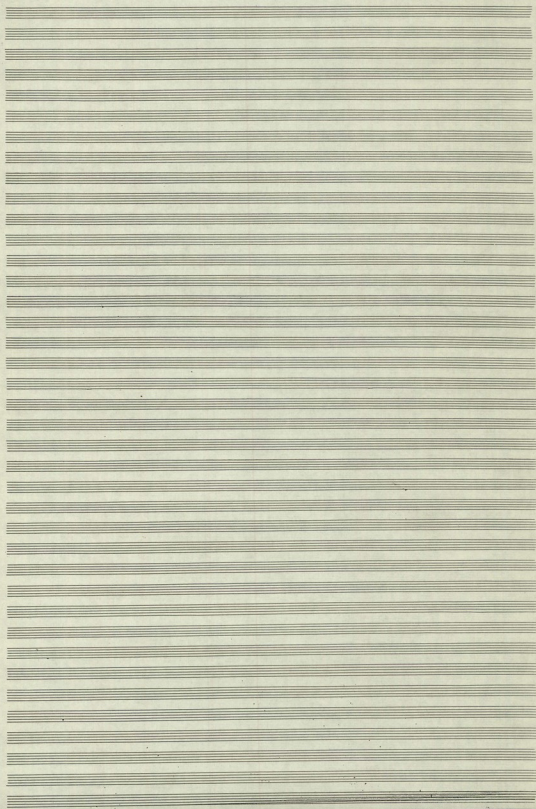
Handwritten musical notation on a single staff, featuring a treble clef and a series of notes and rests.

Handwritten musical notation on a single staff, featuring a treble clef and a series of notes and rests.

Handwritten musical notation on a single staff, featuring a treble clef and a series of notes and rests. The staff is divided into four measures, each labeled with a circled number: ①, ②, ③, and ④.

Handwritten musical notation on a single staff, featuring a treble clef and a series of notes and rests.

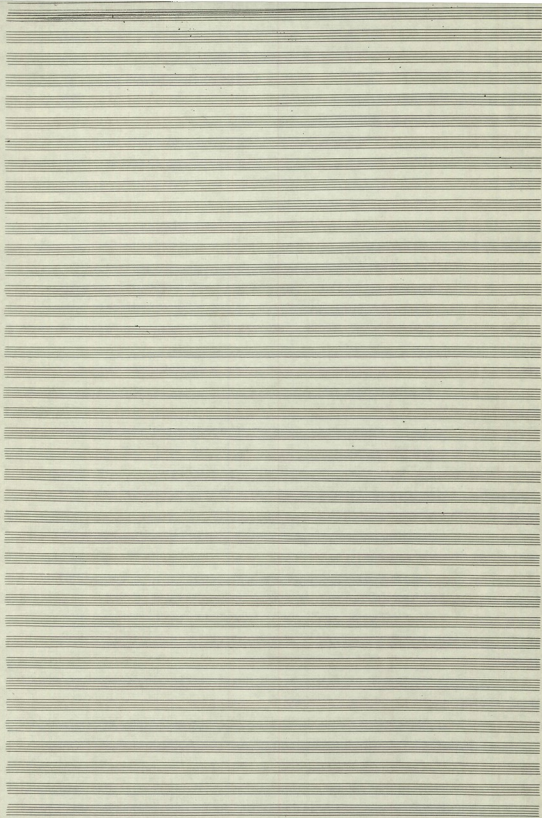
Multiple empty musical staves at the bottom of the page.



Handwritten musical score for guitar and voice. The score includes a treble clef, a key signature of one sharp (F#), and a 4/4 time signature. The lyrics are: "Sa la - sal la ce la mi la ce la re FA la mi". The music features a melodic line with various ornaments and a rhythmic accompaniment. The lyrics "Sa la" and "FA" are written above the notes.

Handwritten musical score for guitar and voice, continuing from the previous system. It includes a treble clef, a key signature of one sharp (F#), and a 4/4 time signature. The lyrics are: "Sa la FA Sa la FA Sa la FA". The music features a melodic line with various ornaments and a rhythmic accompaniment. The lyrics "Sa la" and "FA" are written above the notes.

Handwritten musical score for guitar and voice, continuing from the previous system. It includes a treble clef, a key signature of one sharp (F#), and a 4/4 time signature. The lyrics are: "Sa la FA Sa la FA". The music features a melodic line with various ornaments and a rhythmic accompaniment. The lyrics "Sa la" and "FA" are written above the notes.



3 Lab.

Sia, Sia  
Lao, Lao  
Sia, Lao

Sia, Lao  
Lao, Lao  
Lao, Lao

Lao, Lao  
Lao, Lao  
Lao, Lao

Lao, Lao  
Lao, Lao  
Lao, Lao

Lao, Lao  
Lao, Lao  
Lao, Lao



(A)

(1)

Handwritten musical notation for the first system, featuring a vocal line on a single staff and piano accompaniment on two staves. The notation includes various rhythmic values and melodic lines.

Handwritten musical notation for the second system, continuing the vocal and piano parts from the first system.

Vcl Solo

Handwritten musical notation for the third system, featuring a violin solo on a single staff and piano accompaniment on two staves. The piano part includes a table of rhythmic markings.

0	0
0	0
0	0
0	0
0	0
0	0

Fl 8

Handwritten musical notation for the fourth system, featuring a flute part on a single staff and piano accompaniment on two staves.

Vcl II

Handwritten musical notation for the fifth system, featuring a second violin part on a single staff and piano accompaniment on two staves.

Viol II

Handwritten musical notation for the sixth system, featuring a second violin part on a single staff and piano accompaniment on two staves.

Handwritten musical notation for the seventh system, featuring piano accompaniment on two staves.

m. Sa b

h. Sa b Sn Fa Sn

