

Після
Хіп-хопа

Soto voce

PRELYDIA (1-4)

(C. ARIANO)

M. N. Z. K. K. K. K.

(3-1)-VI-42
n. H. H. H.

PRELUDE I

M. A. Scobie

Andante

Handwritten musical notation for the first system. It consists of two staves. The upper staff is in treble clef with a key signature of one sharp (F#) and a time signature of 3/4. The lower staff is in bass clef with a key signature of one sharp (F#) and a time signature of 3/4. The music begins with a piano (p) dynamic marking. The first measure contains a melodic line in the treble and a bass line in the bass. The second measure continues the melodic line in the treble and the bass line in the bass.

Handwritten musical notation for the second system. It consists of two staves. The upper staff is in treble clef with a key signature of one sharp (F#) and a time signature of 3/4. The lower staff is in bass clef with a key signature of one sharp (F#) and a time signature of 3/4. The music continues from the first system. The first measure shows a melodic line in the treble and a bass line in the bass. The second measure shows a melodic line in the treble and a bass line in the bass.

Handwritten musical notation for the third system. It consists of two staves. The upper staff is in treble clef with a key signature of one sharp (F#) and a time signature of 3/4. The lower staff is in bass clef with a key signature of one sharp (F#) and a time signature of 3/4. The music continues from the second system. The first measure shows a melodic line in the treble and a bass line in the bass. The second measure shows a melodic line in the treble and a bass line in the bass.

Handwritten musical notation for the fourth system. It consists of two staves. The upper staff is in treble clef with a key signature of one sharp (F#) and a time signature of 3/4. The lower staff is in bass clef with a key signature of one sharp (F#) and a time signature of 3/4. The music continues from the third system. The first measure shows a melodic line in the treble and a bass line in the bass. The second measure shows a melodic line in the treble and a bass line in the bass.

Handwritten musical notation for the first system, featuring a treble and bass clef with various notes and accidentals.

Handwritten musical notation for the second system, including dynamic markings like 'p' and 'pp'.

Handwritten musical notation for the third system, showing complex chordal structures.

Adagio *Tempo*

Handwritten musical notation for the fourth system, with tempo markings 'Adagio' and 'Tempo'.

Adagio *rit.*

Handwritten musical notation for the fifth system, including a 'rit.' marking and a circled '3'.

3. vi. 47
Adagio

PRELUDIO 2

Adagio appassionato sempre legato

pp *sempre legato* 3 D

7

pp 3 D

ppp

dim

Handwritten musical notation for the first system, featuring a grand staff with treble and bass clefs. The music includes various notes, rests, and dynamic markings.

dolce

Handwritten musical notation for the second system, continuing the piece with similar notation and dynamics.

Handwritten musical notation for the third system, showing further development of the musical theme.

Handwritten musical notation for the fourth system, ending with a double bar line and a fermata. Includes handwritten notes "M. 24" and "tr. 24".

Five empty musical staves at the bottom of the page.

PRELUDIO 3

Andante. Molto Largo

p

p

p

p

severa orec

FFrit

Corno

Ffrit

Corno

Ffrit

Violon

Violon

Y-77 77
W/2/2/2/2

Handwritten musical score on aged paper, consisting of ten staves. The notation is dense and includes various musical symbols such as clefs, time signatures, notes, rests, and dynamic markings. The score is written in a cursive, handwritten style.

The first staff is a treble clef with a key signature of one sharp (F#) and a time signature of 2/4. It begins with a treble clef and a key signature of one sharp (F#). The second staff is a bass clef with a key signature of one sharp (F#) and a time signature of 2/4. The third staff is a bass clef with a key signature of one sharp (F#) and a time signature of 2/4. The fourth staff is a bass clef with a key signature of one sharp (F#) and a time signature of 2/4. The fifth staff is a bass clef with a key signature of one sharp (F#) and a time signature of 2/4. The sixth staff is a bass clef with a key signature of one sharp (F#) and a time signature of 2/4. The seventh staff is a bass clef with a key signature of one sharp (F#) and a time signature of 2/4. The eighth staff is a bass clef with a key signature of one sharp (F#) and a time signature of 2/4. The ninth staff is a bass clef with a key signature of one sharp (F#) and a time signature of 2/4. The tenth staff is a treble clef with a key signature of one sharp (F#) and a time signature of 2/4.

Key features of the notation include:

- Use of treble and bass clefs.
- Key signature of one sharp (F#).
- Time signature of 2/4.
- Notes, rests, and accidentals (sharps, flats, naturals).
- Dynamic markings such as *p* (piano) and *pp* (pianissimo).
- Phrasing slurs and ties.
- Handwritten annotations and corrections.

PRELUDIO V

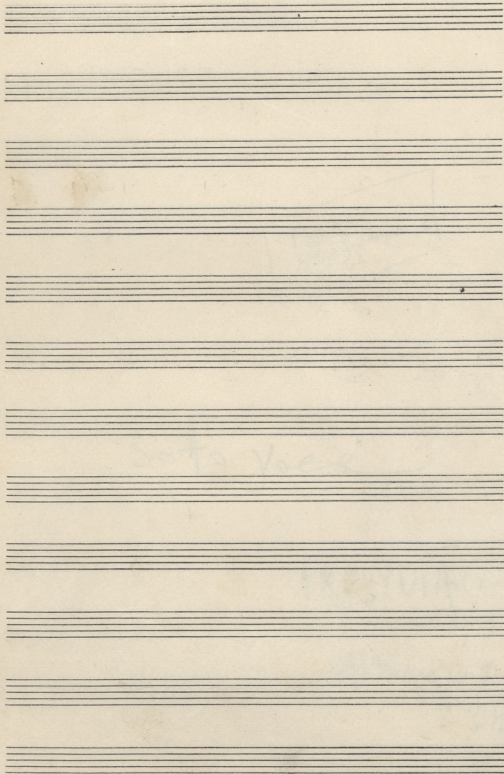
Andante (Cresc. bass) $\frac{3}{4}$

Handwritten musical score for "PRELUDIO V" in 3/4 time, marked "Andante (Cresc. bass)". The score is written on four systems of grand staff notation. The first system includes a treble clef and a "ppp" dynamic marking. The music features a melodic line in the right hand and a harmonic accompaniment in the left hand, with various chords and intervals. The notation includes slurs, ties, and dynamic markings like "ppp" and "ppp".

Handwritten musical score for piano, consisting of five systems of staves. The notation includes chords, melodic lines, and various performance markings.

- System 1:** Features a treble clef staff with a melodic line starting with a treble clef and a bass clef staff with chords. A dynamic marking *pp* is present.
- System 2:** Includes a treble clef staff with notes and a bass clef staff with chords. A dynamic marking *pp* and a tempo marking *mf* are present.
- System 3:** Shows a treble clef staff with notes and a bass clef staff with chords. A tempo marking *Tempo* is present.
- System 4:** Contains a treble clef staff with notes and a bass clef staff with chords. A tempo marking *Tempo* and a dynamic marking *pp* are present.
- System 5:** Features a treble clef staff with notes and a bass clef staff with chords. A tempo marking *Tempo* is present.

Additional markings include *pp*, *mf*, *Tempo*, and *pp* throughout the score. The bottom right corner contains the signature *J. V. 17* and the name *M. A. T.*



This page contains 12 musical staves. The notation is extremely faint and illegible, appearing as light grey or blueish marks on the aged, yellowed paper. The markings are distributed across the staves, with some appearing in groups or patterns that might correspond to musical notes or tablature. The overall appearance is that of a very old or faded manuscript page.