

602

©

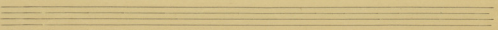
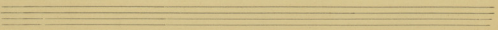
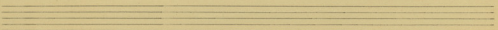
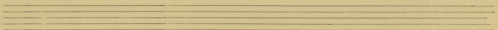
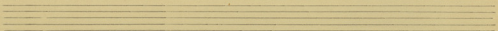
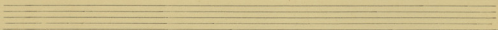
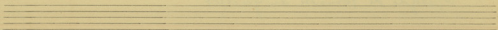
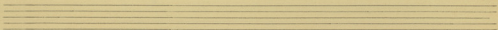
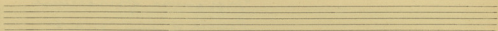
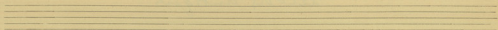
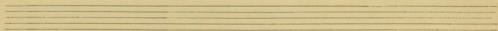
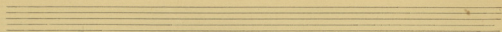
1.
Eisa
21.9.91

Melodis antiquas

Epigramme funéraire
Prière d'un mort

J. N. de Heredia

Épigramme de Permette du Guillet



1.

Epigramme Funéraire.

In des de joie haine de l'œuvre
la neige d'huile Rie d'd

REVUE 21
D'AN

Lentement, mais pas trop.
Il faut être clair surtout en si b.

2

Comme du flûte en l'entaine.

le ce pit, i-han-ger la un-le sau he ad-le. qui ch-sant d'ay sa

son uny rit la poutel le et dont

Handwritten musical score for the first system. It features a vocal line with lyrics and a piano accompaniment. The lyrics are: "Lai le w. badmuk pied den - kel le hui, mit hupenlyg-hise n lai. sel -".

Handwritten musical score for the second system. It includes a vocal line with lyrics: "h. f h." and a piano accompaniment. The lyrics are: "h. f h.".

Handwritten musical score for the third system. It features a vocal line with lyrics and a piano accompaniment. The lyrics are: "ll. le se hat ki - lan, la by. re no - h sel la. La mu - se bergad -".

Handwritten musical score for the fourth system. It includes a vocal line with lyrics: "sch, den st lantich bla De hem se mit gem aila nesintom".

Al- di! par- ce que, a- mi, ne se- ront sur el- ce.

C'est la! 2 Blanche au mi lieu du- re tou- fe de

Andante *et benedictum*

Thy. Sa pie- re fer- me, i- aine est bue- che met- te- e - che d'hu- manite- que ce- le- ste in- fi- ni- me- di- um

Ensemble finale

lent.

The image shows a handwritten musical score on aged paper. At the top, the title "Ensemble finale" is written and underlined. The score is organized into systems, each consisting of a vocal line and a piano accompaniment line. The lyrics are written in French. A large, dark scribble is drawn over the entire page, obscuring much of the musical notation and some of the lyrics.

System 1:
Vocal: 1. i git, e - ran - sau. la
Piano: *rit. (commence avec l'aria)*

System 2:
Vocal: ra - to san - to - zel le qui in - vent dans sa
Piano: *rit. f*

System 3:
Vocal: sur sa - vit la jeune el - li se dit l'air de l'antique ad - ven - tel - le qui - s'ait dans le
Piano: *rit. f*

System 4:
Vocal: ma - ri - ge on lui - sel - le
Piano: *rit. f*

4. (Enigme française)

14:
 2 AN
 1900

Handwritten musical notation for the first system, featuring a treble clef, a key signature of one flat, and a complex melodic line with many accidentals and a large scribble at the end.

Des boursiers en fait la tombe est ar-so-vi-e

Handwritten musical notation for the second system, including a vocal line with lyrics and piano accompaniment.

Et l'un so-se si- case y fait des-se-m-ten

Handwritten musical notation for the third system, including a vocal line with lyrics and piano accompaniment.

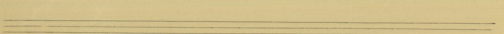
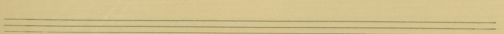
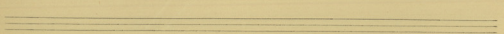
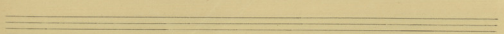
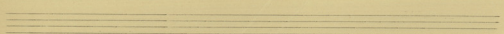
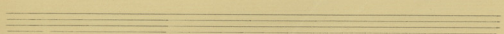
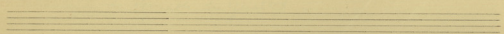
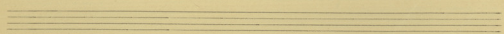
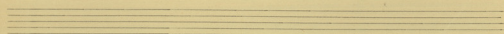
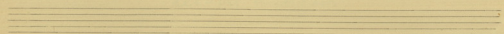
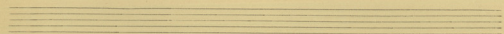
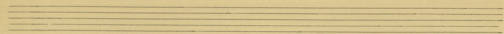
Rit.
 - u-ne li-ba-Hon-de-gardende so- i- e

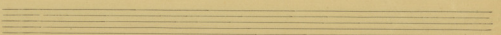
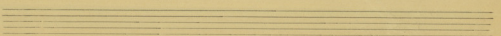
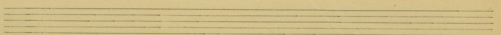
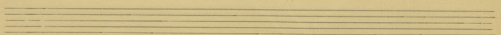
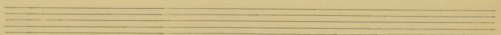
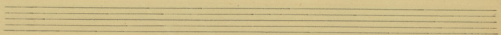
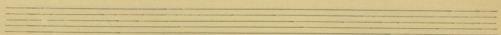
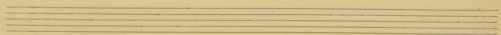
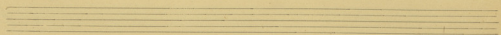
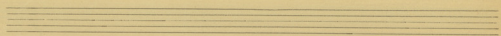
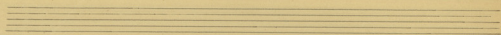
Handwritten musical notation for the fourth system, including a vocal line with lyrics, a "Rit." marking, and piano accompaniment.

Handwritten musical score, first system. The music is heavily scribbled over with large, dark ink strokes. The lyrics "qui, ne Ni - ca laus suu el - le" are visible through the ink. The notation includes a treble clef, a key signature of one flat, and a 3/4 time signature.

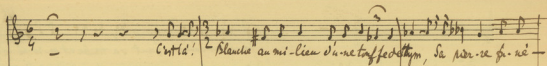
Handwritten musical score, second system. The music is heavily scribbled over with large, dark ink strokes. The lyrics "Amis." are visible. The notation includes a treble clef, a key signature of one flat, and a 3/4 time signature.

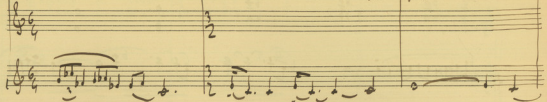
Handwritten musical score, third system. The music is heavily scribbled over with large, dark ink strokes. The lyrics "X page 2. Extrême finisse" and "bli" are visible. The notation includes a treble clef, a key signature of one flat, and a 3/4 time signature.

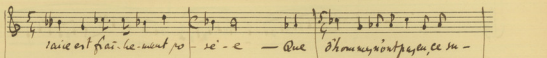


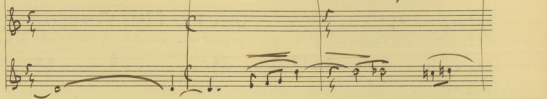


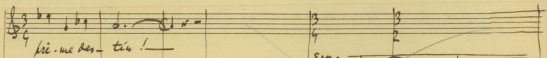
[Epigramme faveraise] -
 Fontanges: - deux opéras écrits -

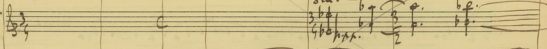

 Citta! - Blanche au mi-lieu d'un nef fecté d'hyem, Sa vierge fi-ne-

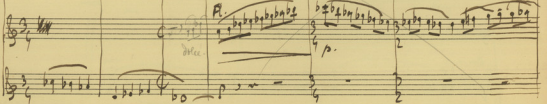


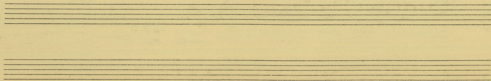

 raie est gra-he-ment po-se-e - Que d'honnuy, ont paye, ce m-




 lie-me des-tin!


San. p. p. p.


Al. marc.



Andant

Des pleurs d'une en fant sa tombe et ar-ro-sé e

Et l'au-ro-re pi-esse y fait cha-que an-ti-que li-ta-tion de pouttes de 20

rit
se-e

emissivus