

Andantino

al tempo.

Handwritten musical notation for the first system, featuring a treble clef, a key signature of one sharp (F#), and a 2/4 time signature. The notation includes a melodic line with eighth and sixteenth notes, and a bass line with chords and eighth notes. A large scribble is present in the middle of the system.

Handwritten musical notation for the second system, featuring a treble clef, a key signature of one sharp (F#), and a 2/4 time signature. The notation includes a melodic line with eighth and sixteenth notes, and a bass line with chords and eighth notes. The word "rit." is written below the first staff.

Handwritten musical notation for the third system, featuring a treble clef, a key signature of one sharp (F#), and a 2/4 time signature. The notation includes a melodic line with eighth and sixteenth notes, and a bass line with chords and eighth notes. The word "sf" is written below the first staff.

Handwritten musical notation for the fourth system, featuring a treble clef, a key signature of one sharp (F#), and a 2/4 time signature. The notation includes a melodic line with eighth and sixteenth notes, and a bass line with chords and eighth notes.

rall.

a tempo poco più lento.

Handwritten musical score system 1, consisting of two staves. The notation is dense and includes various rhythmic markings and accidentals. A large 'X' is drawn over the right half of the system.

Handwritten musical score system 2, consisting of two staves. The notation is dense and includes various rhythmic markings and accidentals. A large 'X' is drawn over the right half of the system.

Handwritten musical score system 3, consisting of two staves. The notation is dense and includes various rhythmic markings and accidentals. The word "rit." is written below the first staff.

Handwritten musical score system 4, consisting of two staves. The notation is dense and includes various rhythmic markings and accidentals. A large 'X' is drawn to the right of the system.

Waltze.

Asolo.

Corys

ff

p

dia -

dall.

o tempo.

pp.

Ornament

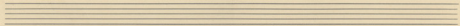
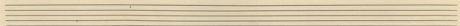
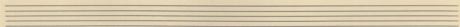
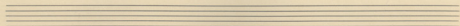
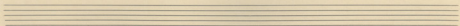
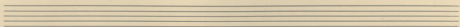
low

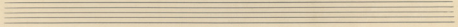
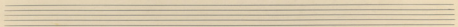
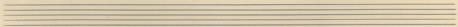
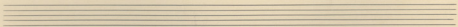
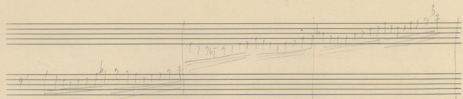
low

Ornament

low

low





Parca 1

Handwritten musical score for Parca 1, first system. It consists of two staves. The upper staff contains a melodic line with various notes and rests, and a large, sweeping slur that spans across several measures. The lower staff contains a bass line with notes and rests. There are some annotations and markings throughout the system.

Handwritten musical score for Parca 1, second system. It consists of two staves. The upper staff contains a melodic line with notes and rests, and a large, sweeping slur. The lower staff contains a bass line with notes and rests. The word "Scena f." is written below the first measure of the lower staff. An arrow points to the first measure of the upper staff.

Handwritten musical score for Parca 1, third system. It consists of two staves. The upper staff contains a melodic line with notes and rests, and a large, sweeping slur. The lower staff contains a bass line with notes and rests. There are some annotations and markings throughout the system.

Handwritten musical score for Parca 1, fourth system. It consists of two staves. The upper staff contains a melodic line with notes and rests, and a large, sweeping slur. The lower staff contains a bass line with notes and rests. There are some annotations and markings throughout the system.

Dibene

1/2 /

Handwritten musical notation system 1, consisting of two staves. The notation includes various notes, rests, and dynamic markings such as *mf* and *ff*. The piece is in 1/2 time. The first staff has a treble clef and the second has a bass clef. The notation is dense with many notes and rests, and includes some handwritten annotations.

Handwritten musical notation system 2, consisting of two staves. The notation includes various notes, rests, and dynamic markings such as *mf* and *ff*. The piece is in 1/2 time. The first staff has a treble clef and the second has a bass clef. The notation is dense with many notes and rests, and includes some handwritten annotations.

Handwritten musical notation system 3, consisting of two staves. The notation includes various notes, rests, and dynamic markings such as *mf* and *ff*. The piece is in 1/2 time. The first staff has a treble clef and the second has a bass clef. The notation is dense with many notes and rests, and includes some handwritten annotations.

Handwritten musical notation system 4, consisting of two staves. The notation includes various notes, rests, and dynamic markings such as *mf* and *ff*. The piece is in 1/2 time. The first staff has a treble clef and the second has a bass clef. The notation is dense with many notes and rests, and includes some handwritten annotations.

Воскресенье $\text{♩} = 92$.

Handwritten musical notation on a three-staff system. The top staff has a treble clef and a 2/4 time signature. The middle staff has a bass clef. The bottom staff has a bass clef. The notation includes various notes, rests, and some markings like '5.' and 'f'.

Handwritten musical notation on a three-staff system. The top staff has a treble clef and a 2/4 time signature. The middle staff has a bass clef. The bottom staff has a bass clef. The notation is heavily scribbled over with dark ink, obscuring much of the original notes.

Handwritten musical notation on a three-staff system. The top staff has a treble clef and a 4/8 time signature. The middle staff has a bass clef. The bottom staff has a bass clef. The notation is heavily scribbled over with dark ink, obscuring much of the original notes.

Handwritten musical notation on a three-staff system. The top staff has a treble clef and a 3/8 time signature. The middle staff has a bass clef. The bottom staff has a bass clef. The notation is heavily scribbled over with dark ink, obscuring much of the original notes.

Handwritten musical notation on a single staff system, featuring a treble clef and a key signature of one flat. The notation includes various rhythmic values, accidentals, and dynamic markings, with some sections appearing heavily scribbled or crossed out.

Handwritten musical notation on a single staff system, featuring a treble clef and a key signature of one flat. The notation includes various rhythmic values, accidentals, and dynamic markings, with some sections appearing heavily scribbled or crossed out.

Handwritten musical notation on a single staff system, featuring a treble clef and a key signature of one flat. The notation includes various rhythmic values, accidentals, and dynamic markings, with some sections appearing heavily scribbled or crossed out.

Handwritten musical notation on a single staff system, featuring a treble clef and a key signature of one flat. The notation includes various rhythmic values, accidentals, and dynamic markings, with some sections appearing heavily scribbled or crossed out.

Handwritten text at the bottom right corner, possibly a signature or page number, including the characters "11111" and "11111".

des Modalisques

Handwritten musical score for "Le Chant du Harem". It features three staves: a vocal line with a treble clef and a key signature of one flat, a piano accompaniment with a grand staff (treble and bass clefs), and a lower staff with a bass clef. The score includes various musical notations such as notes, rests, and dynamic markings like "pp.". The title "Le Chant du Harem." is written below the piano part.

Le Chant du Harem.

seconda volta

Go (p) ...

de triptique

de modalisques

~~... ..~~

Quintessence ... La musique en forme de sérénade

Hymne d'amour

Hymne d'amour.

Handwritten notes on a vertical strip of paper on the left side of the page:

- ⊙
- ⊙
- P.P.
- A.
- ⊙

II. Challenge

Petite suite

rall

mit wolk

Handwritten musical notation for the first system of 'Challenge'. It consists of two staves. The top staff is in treble clef with a key signature of one sharp (F#) and a 2/8 time signature. The bottom staff is in bass clef with the same key signature and time signature. The music is heavily crossed out with a large 'X'.

Lento

Handwritten musical notation for the second system of 'Challenge'. It consists of two staves. The top staff is in treble clef with a key signature of one sharp (F#) and a 2/8 time signature. The bottom staff is in bass clef with the same key signature and time signature. The music is heavily crossed out with a large 'X'.

Handwritten musical notation for the third system of 'Challenge'. It consists of two staves. The top staff is in treble clef with a key signature of one sharp (F#) and a 2/8 time signature. The bottom staff is in bass clef with the same key signature and time signature. The music is heavily crossed out with a large 'X'.

Lento $\text{♩} = 60$.

Handwritten musical notation for the fourth system of 'Challenge'. It consists of two staves. The top staff is in treble clef with a key signature of one sharp (F#) and a 2/8 time signature. The bottom staff is in bass clef with the same key signature and time signature. The music is heavily crossed out with a large 'X'.

Molto legato

pp

rall

Handwritten musical notation for the fifth system of 'Challenge'. It consists of two staves. The top staff is in treble clef with a key signature of one sharp (F#) and a 2/8 time signature. The bottom staff is in bass clef with the same key signature and time signature. The music is heavily crossed out with a large 'X'.

mezzo

mf