

*Andantino*

*al tempo.*

Handwritten musical notation for the first system, featuring a treble clef, a key signature of one sharp (F#), and a 2/4 time signature. The notation includes a melodic line with eighth and sixteenth notes, and a bass line with chords and eighth notes. A double bar line is present, with a large scribble in the treble clef staff immediately following it.

Handwritten musical notation for the second system, continuing the piece. It features a treble clef, a key signature of one sharp (F#), and a 2/4 time signature. The notation includes a melodic line with eighth and sixteenth notes, and a bass line with chords and eighth notes. The word "rit." is written below the first staff, and "s. du. u." is written below the second staff.

Handwritten musical notation for the third system, featuring a treble clef, a key signature of one sharp (F#), and a 2/4 time signature. The notation includes a melodic line with eighth and sixteenth notes, and a bass line with chords and eighth notes. A dynamic marking "sf" is present at the beginning of the first staff.

Handwritten musical notation for the fourth system, featuring a treble clef, a key signature of one sharp (F#), and a 2/4 time signature. The notation includes a melodic line with eighth and sixteenth notes, and a bass line with chords and eighth notes.

rall.

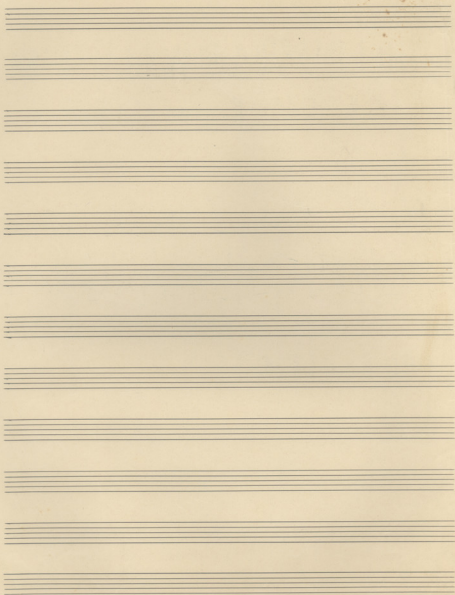
a tempo poco più lento.

Handwritten musical score on aged paper, consisting of four systems of staves. The first two systems are crossed out with a large 'X'. The third system is partially crossed out. The fourth system is not crossed out. The notation includes various rhythmic values, accidentals, and dynamic markings like 'rit.' and 'mf.'

The score is written on four systems of staves. The first system is crossed out with a large 'X'. The second system is also crossed out with a large 'X'. The third system is partially crossed out with a diagonal line. The fourth system is not crossed out and contains a large 'X' at the end of the staff.

The notation includes various rhythmic values, accidentals, and dynamic markings like 'rit.' and 'mf.'

Waltze.



Rall

*p. sostenuto.*

*And. Mos.to.*  
♩ = 12

*And. Mos.to.*

la le me voy re. sous la

*me et*

Asolo.

Corys

dia -

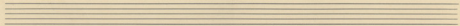
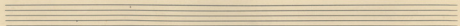
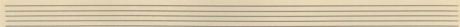
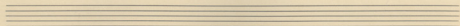
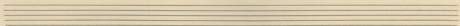
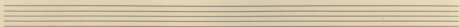
dall.

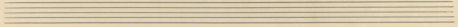
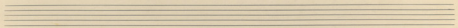
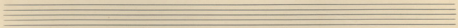
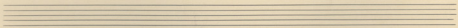
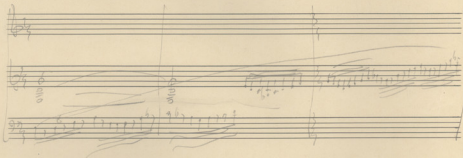
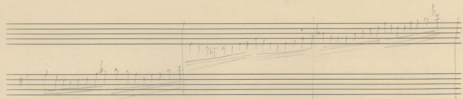
o tempo.

pp.

Handwritten musical notation on a three-staff system. The top staff has a treble clef and contains a long, wavy line with the word "low" written below it. The middle staff has a treble clef and contains a sequence of notes with the word "pleasant" written below it. The bottom staff has a bass clef and contains a sequence of notes with the word "pleasant" written above it. There are various markings and symbols throughout the system, including a "2" below the bottom staff and a "2" below the middle staff.

Handwritten musical notation on a three-staff system. The top staff has a treble clef and contains a sequence of notes with a large "d" written above it. The middle staff has a treble clef and contains a sequence of notes with a large "d" written above it. The bottom staff has a bass clef and contains a sequence of notes with a large "d" written above it. There are various markings and symbols throughout the system, including a "2" below the bottom staff and a "2" below the middle staff.







part 1

*in unison*

Scena f.

*Debene*

1/2 /

Handwritten musical notation on a five-line staff with treble clef. The notation includes notes, rests, and dynamic markings. A large handwritten '2' is written above the staff. The music is divided into two measures by a vertical bar line.

Handwritten musical notation on a five-line staff with treble clef. The notation is heavily crossed out with large diagonal lines. A large handwritten '2' is written above the staff. The music is divided into two measures by a vertical bar line.

Handwritten musical notation on a five-line staff with treble clef. The notation is heavily crossed out with large diagonal lines. A large handwritten '2' is written above the staff. The music is divided into two measures by a vertical bar line.

Handwritten musical notation on a five-line staff with treble clef. The notation includes notes, rests, and dynamic markings. A large handwritten '2' is written above the staff. The music is divided into two measures by a vertical bar line.

Воскресенье  $\text{♩} = 92$ .

Handwritten musical notation on a three-staff system. The top staff has a treble clef and a 2/4 time signature. The middle staff has a bass clef. The bottom staff has a bass clef. The notation includes various notes, rests, and some markings like '5.' and 'f'.

Handwritten musical notation on a three-staff system. The top staff has a treble clef and a 2/4 time signature. The middle staff has a bass clef. The bottom staff has a bass clef. The notation is heavily scribbled over with dark ink, obscuring much of the original notes.

Handwritten musical notation on a three-staff system. The top staff has a treble clef and a 4/8 time signature. The middle staff has a bass clef. The bottom staff has a bass clef. The notation is heavily scribbled over with dark ink, obscuring much of the original notes.

Handwritten musical notation on a three-staff system. The top staff has a treble clef and a 3/8 time signature. The middle staff has a bass clef. The bottom staff has a bass clef. The notation is heavily scribbled over with dark ink, obscuring much of the original notes.

Handwritten musical notation on a single staff system, featuring a treble clef and a key signature of one flat. The notation includes complex rhythmic patterns, numerous accidentals, and large, sweeping curves that suggest a melodic line. The paper shows signs of age and wear.

Handwritten musical notation on a single staff system, featuring a treble clef and a key signature of one flat. The notation includes complex rhythmic patterns, numerous accidentals, and large, sweeping curves that suggest a melodic line. The paper shows signs of age and wear.

Handwritten musical notation on a single staff system, featuring a treble clef and a key signature of one flat. The notation includes complex rhythmic patterns, numerous accidentals, and large, sweeping curves that suggest a melodic line. The paper shows signs of age and wear.

Handwritten musical notation on a single staff system, featuring a treble clef and a key signature of one flat. The notation includes complex rhythmic patterns, numerous accidentals, and large, sweeping curves that suggest a melodic line. The paper shows signs of age and wear.

Handwritten text at the bottom right corner of the page, possibly a signature or a reference number.

# des Modalisques

Handwritten musical score for "Le Chant du Harem". It features three staves: a vocal line (soprano), a piano accompaniment (p.p.), and a bass line. The score includes various musical notations such as notes, rests, and dynamic markings. A large arrow points from the title "des Modalisques" towards the right side of the page.

Le Chant du Harem.

seconda volta

Go (p) ~~le chant du harem~~

~~de l'opéra~~

de l'opéra

~~le chant du harem~~

le chant du harem

Hymne d'amour

Hymne d'amour.

Handwritten notes on a vertical strip of paper on the left side of the page:

- ⊙
- ⊙
- p.p.
- A.
- ⊙
- ⊙

II. Challenge

Petite suite

rall

mit wolk

Handwritten musical notation for the first system of 'Challenge'. It consists of two staves. The upper staff is in treble clef with a key signature of one sharp (F#) and a 2/8 time signature. The lower staff is in bass clef with a key signature of one sharp (F#) and a 2/8 time signature. The music is heavily crossed out with diagonal lines.

Lento

Handwritten musical notation for the second system of 'Challenge'. It consists of two staves. The upper staff is in treble clef with a key signature of one sharp (F#) and a 2/8 time signature. The lower staff is in bass clef with a key signature of one sharp (F#) and a 2/8 time signature. The music is heavily crossed out with diagonal lines.

Handwritten musical notation for the third system of 'Challenge'. It consists of two staves. The upper staff is in treble clef with a key signature of one sharp (F#) and a 2/8 time signature. The lower staff is in bass clef with a key signature of one sharp (F#) and a 2/8 time signature. The music is heavily crossed out with diagonal lines.

Lento  $\text{♩} = 60$ .

Handwritten musical notation for the fourth system of 'Challenge'. It consists of two staves. The upper staff is in treble clef with a key signature of one sharp (F#) and a 2/8 time signature. The lower staff is in bass clef with a key signature of one sharp (F#) and a 2/8 time signature. The music is heavily crossed out with diagonal lines.

Molto legato

pp

rall

Handwritten musical notation for the fifth system of 'Challenge'. It consists of two staves. The upper staff is in treble clef with a key signature of one sharp (F#) and a 2/8 time signature. The lower staff is in bass clef with a key signature of one sharp (F#) and a 2/8 time signature. The music is heavily crossed out with diagonal lines.

mezzo

mf