

Allegro 1-152

Stab - a - te qui ex - sis - tis in cae - lis qui sus - ce - disti

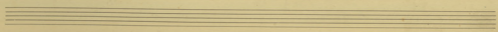
This system contains the first three staves of the musical score. The vocal line is in treble clef with a key signature of one flat and a 4/4 time signature. The piano accompaniment is in the same key and time, featuring a rhythmic pattern of eighth notes. The bass line is in bass clef with a 4/4 time signature.

pa - ra - m - nos de - pre - cari - bus in ter - ra - rum qui sus - ce - disti

This system contains the next three staves of the musical score. The vocal line continues with the same notation as the first system. The piano accompaniment and bass line continue their respective parts. There are some handwritten markings and corrections on the piano part.

Ben - e - dic - ti - o - nis et ad - ora - tionis et lau - da - tionis et glorificationis et honoris et

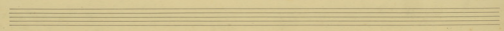
This system contains the final three staves of the musical score on this page. The vocal line concludes with a long note. The piano accompaniment and bass line also conclude their parts. There are some handwritten markings at the end of the system.



Handwritten musical score system 1. It consists of three staves. The top staff is a vocal line with lyrics: "du pi pi bi san ka - - Na - Na - Na - Na - Na - Na - Na - Na - Na". The middle staff is a piano accompaniment with chords and some melodic lines. The bottom staff is a bass line with chords. There are various musical notations such as slurs, accents, and dynamics like "p" and "f".

Handwritten musical score system 2. It consists of three staves. The top staff is a vocal line with lyrics: "ou y' de la - - si - - na - - na - - na - - na - - na - - na". The middle staff is a piano accompaniment. The bottom staff is a bass line. The system includes complex chordal structures and melodic lines.

Handwritten musical score system 3. It consists of three staves. The top staff is a vocal line with lyrics: "Na - Na - Na - Na - Na - Na - Na - Na - Na - Na - Na - Na - Na - Na - Na - Na - Na - Na - Na". The middle staff is a piano accompaniment with chords and some melodic lines. The bottom staff is a bass line with chords. There are various musical notations such as slurs, accents, and dynamics like "p" and "f".



*svi multa allegro - vivace*

A

*Allegro - vivace*

Ma - gi - ca - le - po - te - sta - tis in - vi - si - bi - li - um

*Allegro - vivace*

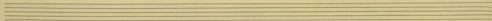
di - ce - re - Ka - tho - li - ca - rum

*rit.* *mp.*

*Allegro - vivace*

Ma - gi - ca - le - po - te - sta - tis in - vi - si - bi - li - um

*rit. an.*



*Allegretto moderato* = 80.

Handwritten musical score for the first system. It consists of three staves. The top staff is a vocal line with lyrics: *f* *Tou* *ga* *ly* *pe* *u* *en* *im* *pe* *ri* *en* *ta* *ci*. The middle and bottom staves are piano accompaniment. The key signature has one sharp (F#) and the time signature is 3/4. The music is in a moderate tempo.

Handwritten musical score for the second system. It consists of three staves. The top staff is a vocal line with lyrics: *na* *ra* *na* *pe* *na* *vai* *vai*. The middle and bottom staves are piano accompaniment. The key signature has one sharp (F#) and the time signature is 3/4. The music is in a moderate tempo. There are some markings like *sf* and *du* in the piano part.

Handwritten musical score for the third system. It consists of three staves. The top staff is a vocal line with lyrics: *na* *na* *pe* *na* *vai* *vai*. The middle and bottom staves are piano accompaniment. The key signature has one sharp (F#) and the time signature is 3/4. The music is in a moderate tempo. There is a large scribble on the left side of the system and a signature *J. H. P.* on the right side.

