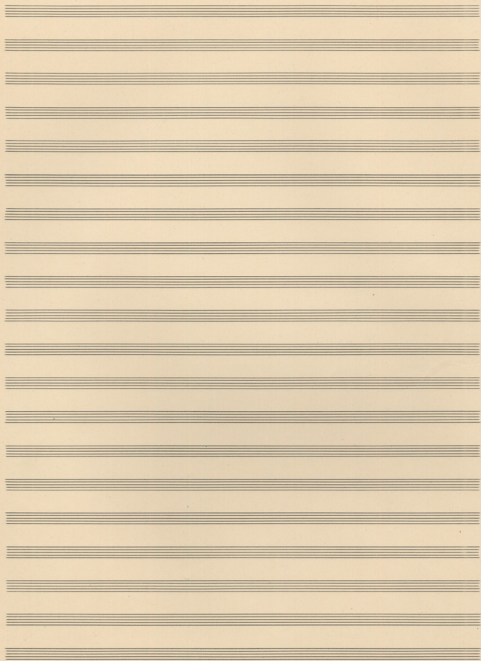


[Sonate pour violoncelle  
et piano p. 1-16  
1 page 5/16.]



Emile Brada  
Sonata from violoncelle et piano  
Allegro moderato = 60.

Gr. 1

Handwritten musical score for the first system. It consists of three staves. The top staff is in treble clef with a 2/4 time signature. The middle staff is in bass clef. The bottom staff is in bass clef. The music includes various notes, rests, and accidentals. Dynamic markings include *mp* and *ra*. There are some annotations like *A.* and *b* with a slash and a plus sign.

Handwritten musical score for the second system. It consists of three staves. The top staff is in treble clef. The music includes various notes, rests, and accidentals. The word *detaches* is written above the staff. There are some annotations like *B.* and *b* with a slash and a plus sign.

Handwritten musical score for the third system. It consists of three staves. The top staff is in treble clef. The music includes various notes, rests, and accidentals. The word *Cadenza* is written below the staff. There are some annotations like *C.* and *b* with a slash and a plus sign.

Handwritten musical score for the fourth system. It consists of three staves. The top staff is in treble clef. The music includes various notes, rests, and accidentals. The word *Cadenza* is written below the staff. There are some annotations like *C.* and *b* with a slash and a plus sign.



ba. #

non

mi



Loco.

Handwritten musical score for the first system, featuring a treble clef, a key signature of one flat, and a 2/4 time signature. The music is heavily scribbled over with dark ink. The word "Loco." is written above the staff. Dynamic markings "mar. ho. co" and "mf" are visible.

Handwritten musical score for the second system, featuring a treble clef, a key signature of one flat, and a 2/4 time signature. The music is heavily scribbled over with dark ink. Dynamic markings "co" and "sf" are visible.

Handwritten musical score for the third system, featuring a treble clef, a key signature of one flat, and a 2/4 time signature. The music is heavily scribbled over with dark ink.

Handwritten musical score for the fourth system, featuring a treble clef, a key signature of one flat, and a 2/4 time signature. The music is heavily scribbled over with dark ink. Dynamic markings "no." and "no." are visible.

*dim.*

Handwritten musical score for the fifth system, featuring a treble clef, a key signature of one flat, and a 2/4 time signature. The music is heavily scribbled over with dark ink. The word "dim." is written above the staff.

Handwritten musical notation on three staves. The notation includes various notes, rests, and accidentals. A large, dark scribble is present on the left side of the first two staves, partially obscuring the notes. The third staff shows more clearly defined notes and rests.

Handwritten musical notation on three staves. The notation is dense with notes and rests. A large, dark scribble is present in the center of the second and third staves, obscuring some of the notation. The first staff shows notes with stems and beams.

Handwritten musical notation on three staves. The notation is dense with notes and rests. A large, dark scribble is present in the center of the second and third staves, obscuring some of the notation. The first staff shows notes with stems and beams.

Handwritten musical notation on three staves. The notation is dense with notes and rests. A large, dark scribble is present on the right side of the second and third staves, obscuring some of the notation. The first staff shows notes with stems and beams.

*Andante*

The first system of handwritten musical notation consists of three staves. The top staff features a melodic line with various accidentals and slurs. The middle staff contains a complex texture of notes and rests, possibly representing a piano accompaniment. The bottom staff shows a bass line with some rests and notes. The notation is dense and appears to be a working draft.

The second system continues the musical composition with three staves. The notation is highly detailed, with many notes and slurs. There are some markings that look like 'p' or 'f' (piano or forte) and some dynamic markings. The overall style is that of a composer's sketch.

The third system of notation shows further development of the piece. It includes three staves with intricate melodic and harmonic structures. There are some markings that look like 'cres.' (crescendo) and some other performance instructions. The handwriting is consistent with the previous systems.

The fourth and final system on the page consists of three staves. The notation is very dense, with many notes and slurs. There are some markings that look like 'p' and 'f'. The system concludes the piece with a final cadence or ending.



*molto calmo.*

70.

Handwritten musical score system 1, consisting of three staves. The top staff contains a melodic line with various accidentals and dynamics. The middle and bottom staves contain complex chordal textures with many notes and slurs. A dynamic marking 'pp.' is visible in the middle staff.

Handwritten musical score system 2, consisting of three staves. The notation is dense and includes a large section of heavy scribbles in the middle staff, possibly indicating a deletion or a very dense texture.

Handwritten musical score system 3, consisting of three staves. The notation continues with complex textures and some scribbles in the middle staff.

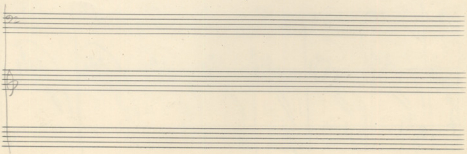
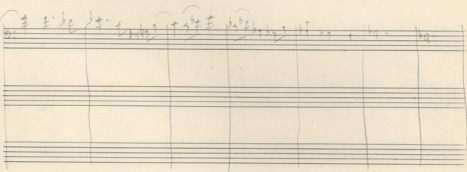
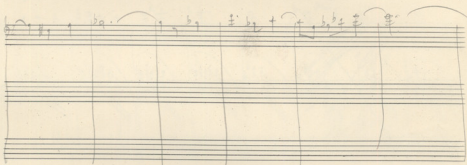
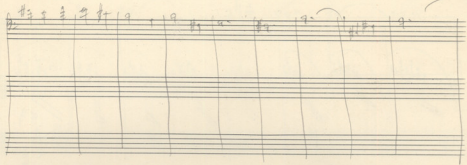
Handwritten musical score system 4, consisting of three staves. The notation continues with complex textures and some scribbles in the middle staff.

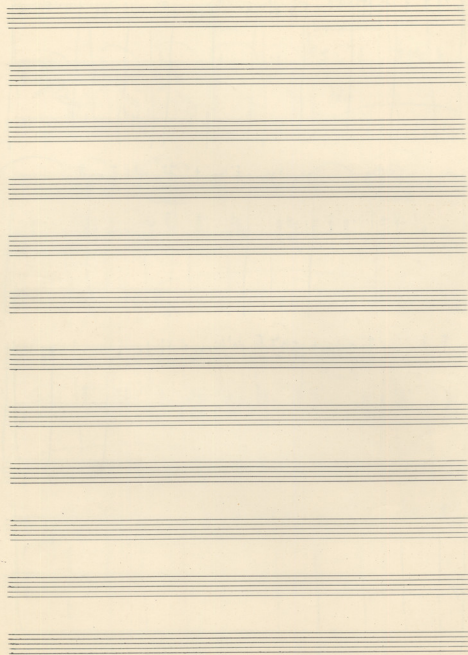
Handwritten musical score, first system. It consists of three staves. The top staff has a treble clef and a key signature of one flat. The middle staff has a bass clef. The bottom staff has a bass clef. The music is written in a cursive, handwritten style. There are several slurs and dynamic markings. The word "p" is written below the first staff. The word "Cres" is written above the first staff. The word "Dolce" is written above the second staff.

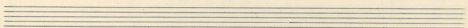
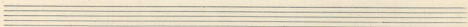
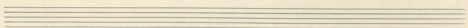
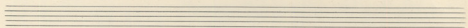
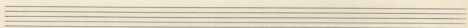
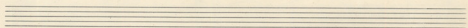
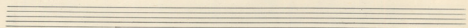
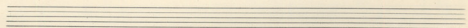
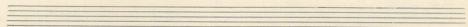
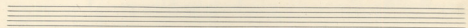
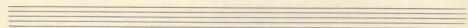
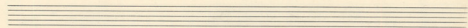
Handwritten musical score, second system. It consists of three staves. The top staff has a treble clef and a key signature of one flat. The middle staff has a bass clef. The bottom staff has a bass clef. The music is written in a cursive, handwritten style. There are several slurs and dynamic markings. The word "p" is written below the first staff. The word "Cres" is written above the first staff. The word "Dolce" is written above the second staff.

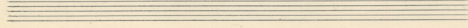
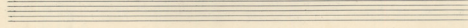
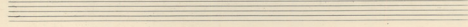
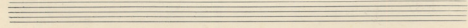
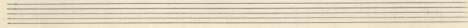
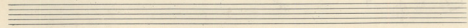
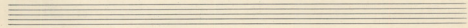
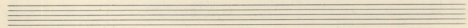
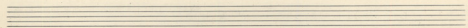
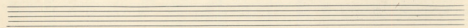
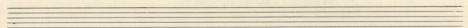
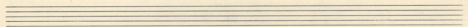
Handwritten musical score, third system. It consists of three staves. The top staff has a treble clef and a key signature of one flat. The middle staff has a bass clef. The bottom staff has a bass clef. The music is written in a cursive, handwritten style. There are several slurs and dynamic markings. The word "p" is written below the first staff. The word "Cres" is written above the first staff. The word "Dolce" is written above the second staff.

Handwritten musical score, fourth system. It consists of three staves. The top staff has a treble clef and a key signature of one flat. The middle staff has a bass clef. The bottom staff has a bass clef. The music is written in a cursive, handwritten style. There are several slurs and dynamic markings. The word "p" is written below the first staff. The word "Cres" is written above the first staff. The word "Dolce" is written above the second staff.







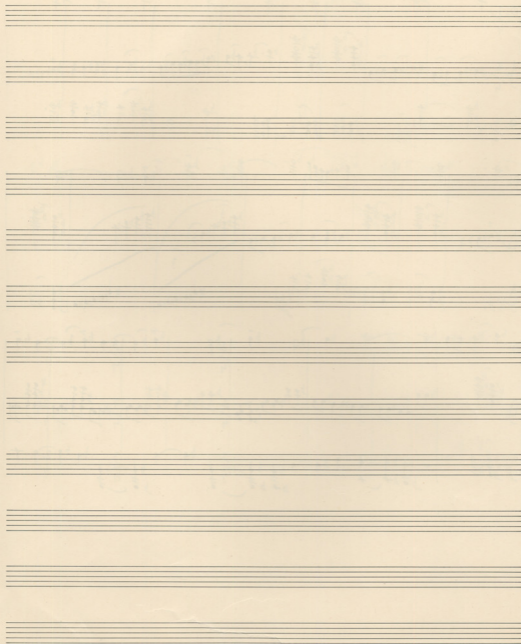


Handwritten musical notation, first system. It consists of three staves. The top staff contains a series of chords with accidentals (flats and naturals) and some rhythmic markings. The middle staff features a melodic line with eighth and sixteenth notes, including slurs and ties. The bottom staff provides a bass line with chords and notes, also featuring slurs and ties. The time signature is 3/4.

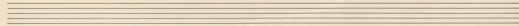
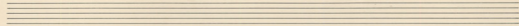
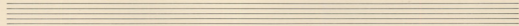
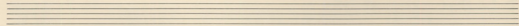
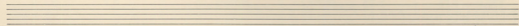
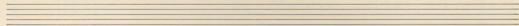
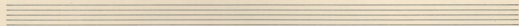
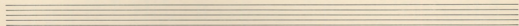
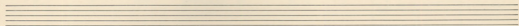
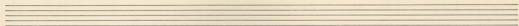
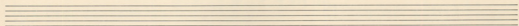
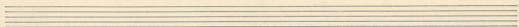
Handwritten musical notation, second system. It consists of three staves. The top staff continues the chordal progression with various accidentals. The middle staff shows a melodic line with a prominent slur and a fermata-like structure. The bottom staff continues the bass line with chords and notes. The time signature is 3/4.

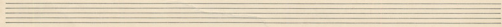
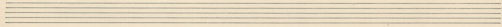
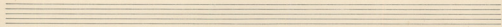
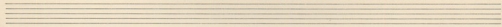
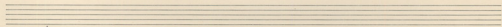
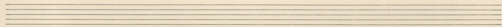
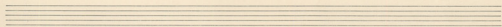
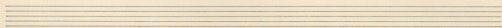
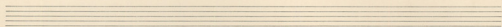
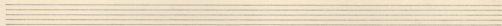
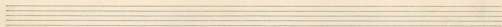
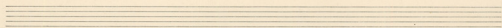
Handwritten musical notation, third system. It consists of three staves. The top staff continues the chordal progression. The middle staff features a melodic line with eighth notes and slurs. The bottom staff continues the bass line with chords and notes. The time signature is 3/4.

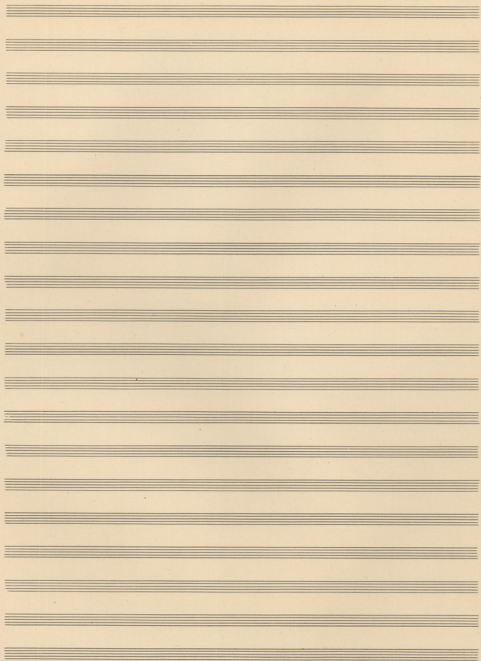
Four empty musical staves at the bottom of the page, indicating the end of the written music on this page.











DE GRUYTER  
M. MOZART

A blank sheet of aged, cream-colored musical manuscript paper. The page is ruled with 20 horizontal staves, each consisting of five parallel lines. The staves are arranged in a vertical column, with a small gap between each staff. The paper shows signs of age, including slight discoloration and a few small dark spots. In the top right corner, there is a faint red stamp that reads "DE GRUYTER" and "M. MOZART" in a stylized font. The overall appearance is that of a clean but old piece of music manuscript paper.