

Köpn sai unu-jis.

11 mas Aja Rindz. 70

Moderato ♩ = 88 ♩ = 160.

Handwritten musical score for voice and piano. The score is written in G major and 3/4 time. It consists of four systems of music, each with a vocal line and a piano accompaniment line. The lyrics are in a Cyrillic-based script, likely Georgian, and are written below the vocal line. The piano part includes dynamic markings such as *p. Dolcissimo* and *And.*.

System 1:
 Vocal: 11. *un-ju. un-ju. un-ju. un-ju. un-ju. un-ju. un-ju. un-ju.*
 Piano: *p. Dolcissimo*

System 2:
 Vocal: *sa de. sa - ju. sa ju. sa ju. sa ju. sa ju. sa ju. sa ju. sa ju.*
 Piano: *And. x. mod. # Ad libitum*

System 3:
 Vocal: *sa de. sa - ju. sa ju. sa ju. sa ju. sa ju. sa ju. sa ju. sa ju.*
 Piano: *And.*

System 4:
 Vocal: *sa de. sa - ju. sa ju. sa ju. sa ju. sa ju. sa ju. sa ju. sa ju.*
 Piano: *And.*



MOZART
K. 279

Handwritten text, possibly a title or name, located at the top left of the page.

Handwritten text, possibly a date or reference number, located at the top right of the page.

The central portion of the page contains a large, faint, and mostly illegible musical score or document. It consists of approximately 12 horizontal staves, each with five lines. The text and markings on the staves are extremely light and difficult to discern, appearing as ghostly impressions of a musical composition. The overall appearance is that of a very faded or overexposed scan of a handwritten musical manuscript.

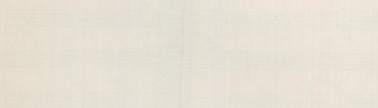
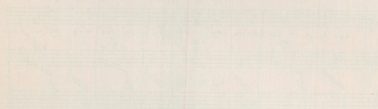
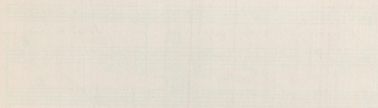
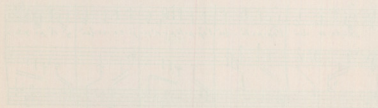
TEASER
2025

Handwritten musical score system 1. The top staff contains a vocal line with lyrics: "na-na-na-lai Pa-pa-pa-lai Pa-pa-pa-lai na-na-na-lai". The bottom two staves show piano accompaniment with chords and melodic lines.

Handwritten musical score system 2. The top staff contains a vocal line with lyrics: "na-na-lai Pa-pa-pa-lai na-na-na-lai - - - - -". The bottom two staves show piano accompaniment.

Handwritten musical score system 3. The top staff contains a vocal line with lyrics: "na-na-na-lai Pa-pa-pa-lai na-na-na-lai". The bottom two staves show piano accompaniment.

Handwritten musical score system 4. The top staff contains a vocal line with lyrics: "na-na-lai Pa-pa-pa-lai na-na-na-lai". The bottom two staves show piano accompaniment. A dynamic marking "pp" is visible above the second staff.

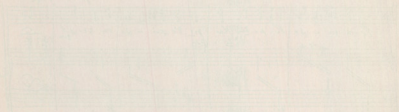


Handwritten musical score for a vocal line and piano accompaniment. The score is written on a system of three staves. The top staff is for the vocal line, and the bottom two staves are for the piano accompaniment. The music is in 2/4 time and features a key signature of one flat (B-flat). The lyrics are written below the vocal line.

Lyrics: *Pa-ri-je-ri - da Pa - a - Kai je go - xai - di en si - di*

The score includes various musical notations such as notes, rests, and dynamic markings. The piano accompaniment consists of chords and arpeggiated figures.

Ten empty musical staves, arranged vertically, for additional notation.



[Faint, illegible text line]

[Faint, illegible text line]

[Faint, illegible text line]

[Faint, illegible text line]

[Faint, illegible text line]

[Faint, illegible text line]

[Faint, illegible text line]

[Faint, illegible text line]

[Faint, illegible text line]