

lento ♩ = 54.

# Violoncelle

II.

Handwritten musical notation for the first system of the cello part. It begins with a treble clef, a key signature of one sharp (F#), and a 2/4 time signature. The tempo is marked "lento" with a quarter note equal to 54 beats. The first measure contains a whole rest. The melody starts in the second measure. Dynamics include *p.* and *cresc.*. A performance instruction *Cardano Solo.* is written above the staff.

Handwritten musical notation for the second system. The tempo changes to *rit quasi allegretto* with a quarter note equal to 54 beats. The time signature changes to 3/4. Dynamics include *p.* and *mp.*

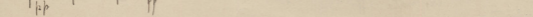
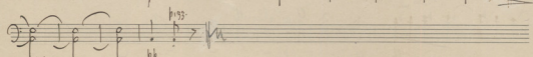
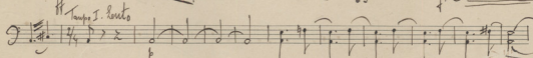
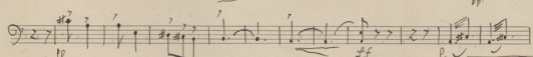
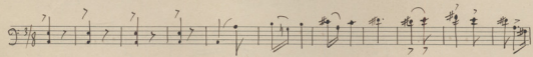
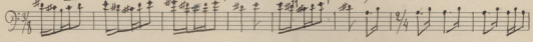
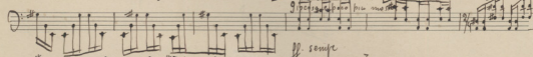
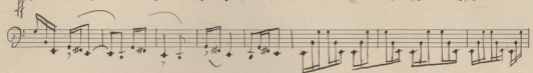
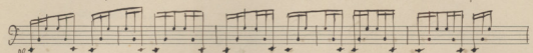
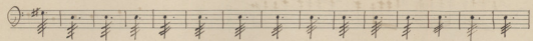
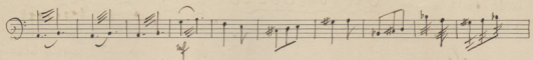
Handwritten musical notation for the third system. The time signature changes to 5/8. Dynamics include *p.* and *mp.*

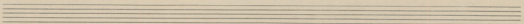
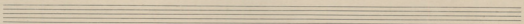
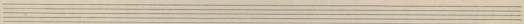
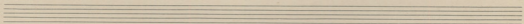
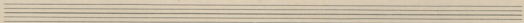
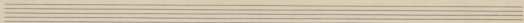
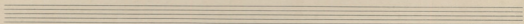
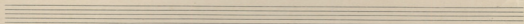
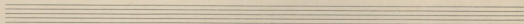
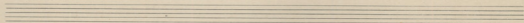
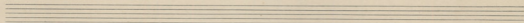
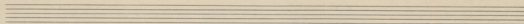
Handwritten musical notation for the fourth system. The time signature changes to 2/4. Dynamics include *dim. pp.* and *rit molto*.

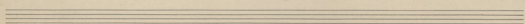
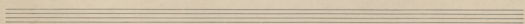
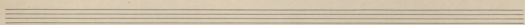
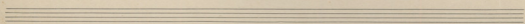
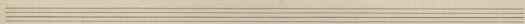
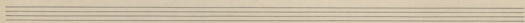
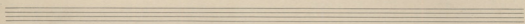
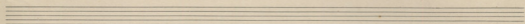
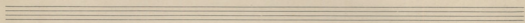
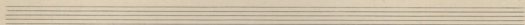
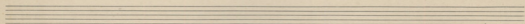
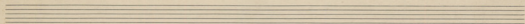
Handwritten musical notation for the fifth system. The tempo is marked *vale. quasi allegretto* with a quarter note equal to 54 beats. The time signature changes to 3/8. Dynamics include *pp.*

Handwritten musical notation for the sixth system. The tempo is marked *Andante molto* with a quarter note equal to 92 beats. The time signature changes to 3/4. Dynamics include *pp.*, *f*, and *mp.*

Handwritten musical notation for the seventh system. The tempo is marked *Quasi allegretto*. The time signature changes to 3/8. Dynamics include *cresc. molto* and *ff*.







Cello

IV.

1

27.

Handwritten musical notation for the first system, featuring a treble clef and a 5/4 time signature. The music includes a melodic line with slurs and a series of sharp signs (F#) above the staff. A *pizz.* (pizzicato) marking is present above the staff.

Handwritten musical notation for the second system, featuring a bass clef. The music includes a melodic line with slurs and a series of sharp signs (F#) above the staff. A *acc.* (accents) marking is present above the staff.

Handwritten musical notation for the third system, featuring a bass clef. The music includes a melodic line with slurs and a series of sharp signs (F#) above the staff. A *tr.* (trills) marking is present above the staff.

Handwritten musical notation for the fourth system, featuring a bass clef. The music includes a melodic line with slurs and a series of sharp signs (F#) above the staff. A *pizz.* (pizzicato) marking is present above the staff.

Handwritten musical notation for the fifth system, featuring a bass clef. The music includes a melodic line with slurs and a series of sharp signs (F#) above the staff.

Handwritten musical notation for the sixth system, featuring a bass clef. The music includes a melodic line with slurs and a series of sharp signs (F#) above the staff. A *pp.* (pianissimo) marking is present above the staff.

Handwritten musical notation for the seventh system, featuring a bass clef. The music includes a melodic line with slurs and a series of sharp signs (F#) above the staff. A *pizz.* (pizzicato) marking is present above the staff.

Handwritten musical notation for the eighth system, featuring a bass clef. The music includes a melodic line with slurs and a series of sharp signs (F#) above the staff.

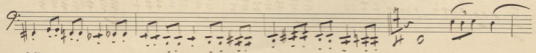
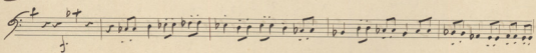
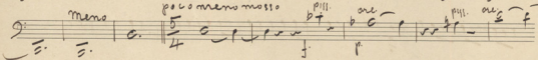
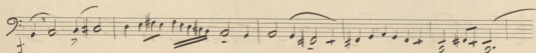
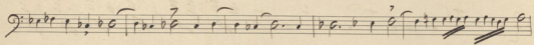
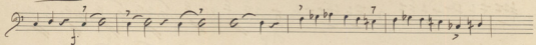
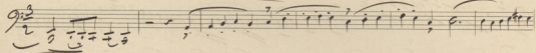
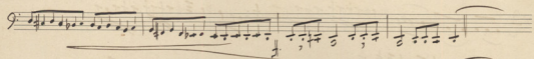
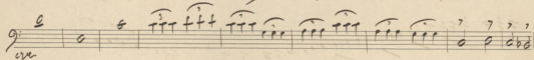
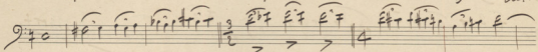
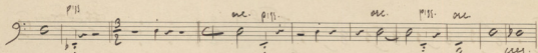
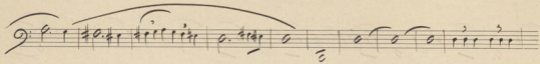
Handwritten musical notation for the ninth system, featuring a bass clef. The music includes a melodic line with slurs and a series of sharp signs (F#) above the staff.

Handwritten musical notation for the tenth system, featuring a bass clef. The music includes a melodic line with slurs and a series of sharp signs (F#) above the staff.

Handwritten musical notation for the eleventh system, featuring a bass clef. The music includes a melodic line with slurs and a series of sharp signs (F#) above the staff. A *acc.* (accents) marking is present above the staff.

U. P.

Handwritten musical score on ten staves, featuring various musical notations including notes, rests, and dynamic markings. The score is written in a single system across ten staves. The notation includes eighth and sixteenth notes, rests, and dynamic markings such as *p* and *f*. The key signature changes from one sharp (F#) to two sharps (F# and C#). The time signature changes from 3/4 to 3/2, then to 3/4, and finally to 3/2. The score concludes with a double bar line and a fermata over the final note.





Handwritten musical score consisting of 11 staves. The notation includes various clefs (treble and bass), time signatures (3/4, 2/4, 3/2, 5/4, 3/2, 2/2, 3/2, 5/4), and dynamic markings such as *p* and *mp*. The score features complex rhythmic patterns, including triplets and sixteenth notes, and includes some performance instructions like *pp* and *accen*. The manuscript is written in dark ink on aged paper.



Handwritten musical notation on a single staff, featuring complex rhythmic patterns and accidentals. The notation includes various note values and sharp signs.

Handwritten musical notation on a single staff, starting with a treble clef and a 5/4 time signature. It includes a dynamic marking 'mf' and a fermata over a note.

Handwritten musical notation on a single staff, continuing the piece with various note values and accidentals.

Handwritten musical notation on a single staff, featuring complex rhythmic patterns and accidentals.

Handwritten musical notation on a single staff, starting with a treble clef and a 3/2 time signature. It includes a dynamic marking 'piss.' and a fermata.

Handwritten musical notation on a single staff, continuing the piece with various note values and accidentals.

Handwritten musical notation on a single staff, starting with a treble clef and a 4/4 time signature. It includes a dynamic marking 'mf' and a fermata.

Handwritten musical notation on a single staff, featuring complex rhythmic patterns and accidentals.

Handwritten musical notation on a single staff, starting with a treble clef and a 3/2 time signature. It includes a dynamic marking 'mf' and a fermata.

Handwritten musical notation on a single staff, continuing the piece with various note values and accidentals.

Handwritten musical notation on a single staff, featuring complex rhythmic patterns and accidentals.

Handwritten musical notation on a single staff, continuing the piece with various note values and accidentals.



Handwritten musical score on aged paper. The score consists of seven staves. The first six staves are in bass clef and contain rhythmic patterns of eighth and sixteenth notes, often beamed together. The seventh staff is in treble clef and features a complex, dense texture of sixteenth notes, possibly a tremolo or a rapid scale. The paper shows signs of age, including some staining and a small red mark on the second staff.

Five empty musical staves, each consisting of five horizontal lines, arranged vertically at the bottom of the page.

