



Handwritten text on aged, yellowed paper, likely bleed-through from the reverse side. The text is extremely faint and illegible due to fading and the age of the document. The handwriting appears to be in cursive or a similar script. The paper shows signs of wear, including creases and discoloration.

a au Tēs do o o o ζα α α α α αv Tās Tve e e e

e e eu μα α α ο ο ο πα av Ag γα α να α

Tε e e e e e ζει ει ει ει λει ει ει ει γας

Tov Ta a πα α α xov av Tw ω ωv Tη η ης ψυ υ υ xη ης

δει ει ει ει ζας Tās xει ει ει ει ει ει ει πας

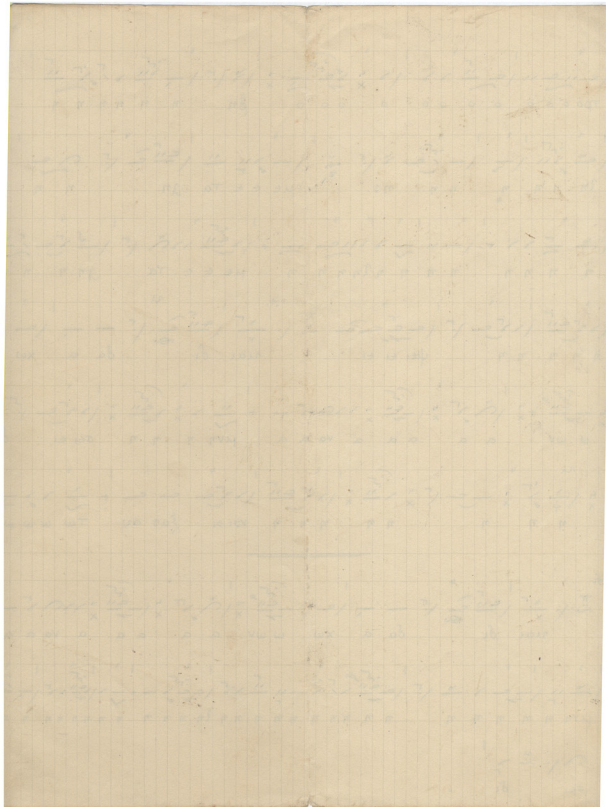
uai ai ai ai Tε ες πο ο ο ο ο ο ο ο da a uai Tε ες

πο ο da ας σ ες ε Tη η ηv α α η η ης ε ε v

Twv e e e e e e λe e e e Tη Tη η η ης

*[Faint, illegible handwriting on lined paper, possibly bleed-through from the reverse side.]*









*[The page contains several lines of extremely faint, illegible handwriting on lined paper. The text is mirrored across the page, suggesting bleed-through from the reverse side. No specific words or numbers are discernible.]*



vo o ov o o o o ου υ υ α αυ τοις προ ου

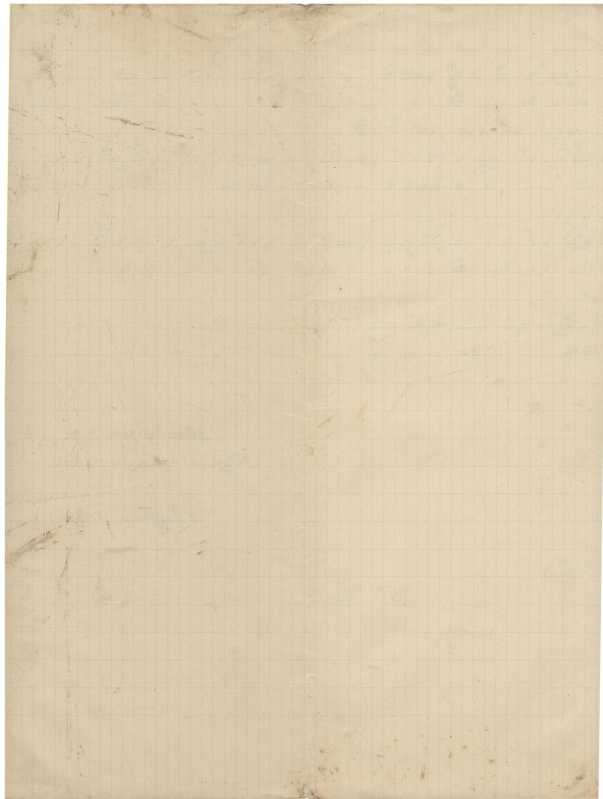
vs α α μεεε ε ε εε ευ σε Κε υ υ υ

πι ι ι ε δο ο ο ο ο ο ο α α α α α α α α α

α α σοι οι οι οι

Μουσική  
 Νηews Α. Καμαράδου

9 Ιουλίου 1921





Ἐρωθινὸν ζ. ἄργον »

N.T.B.

1921