

Вази I

Лелорѣя





Bassi I

Handwritten musical score for Basses I, featuring two staves with notes and Greek lyrics. The first staff contains the following notes and lyrics:  $\text{A}^1$   $\text{m}^1$   $\text{K}^1$   $\text{p}^1$   $\text{e}^1$   $\text{x}^1$   $\text{n}^1$   $\text{s}^1$   $\text{o}^1$   $\text{n}^1$   $\text{K}^2$   $\text{p}^2$   $\text{e}$   $\text{e}$   $\text{x}^2$   $\text{n}^2$   $\text{s}^2$   $\text{o}^2$   $\text{n}^2$ . The second staff contains the following notes and lyrics:  $\text{K}^3$   $\text{p}^3$   $\text{e}^3$   $\text{x}^3$   $\text{n}^3$   $\text{s}^3$   $\text{o}^3$   $\text{n}^3$   $\text{S}^3$   $\text{o}^3$   $\text{K}^3$   $\text{p}^3$   $\text{e}$ . The score is written in bass clef with a key signature of one sharp (F#) and a 3/4 time signature. The lyrics are in Greek: "Α μὴν Κύριε ἐχέ ν σου Κύρι ε ἐχέ ν σου" and "Κύριε ἐχέ ν σου Σοὶ Κύρι ε".

# Masore

*p*

Πα - τέ - ρα ἅ - ρι - ὄν - τω ἰ - ἄ - γι - ον Πνεύ - μα - Ἅ - γι - ον

*mp* *p*

ὁ - μὸ - ὄν - τω ἰ - ἄ - γι - ον

*p*

Ἔ - λε - ὄν - τω ἰ - ἄ - γι - ον Πνεύ - μα - Ἅ - γι - ον

*p*

Καὶ με - τὰ τοῦ Πνεύ - μα - Ἅ - γι - ον

*mp*

Ἐ - χο - με - ν πρὸς τὸν Κύ - ρι - ον

*p*

Ἄ - ἁ - λὸ - ὄν - τω ἰ - ἄ - γι - ον



Solo

Σοι εὐχαρίστου μὲν - Κύριε ἐγὼ δεῖξά σοι

*f* ὁ Θεὸς οἱ *pp* μὲν -

ἅ - - - μὲν -

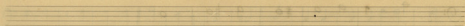
Δόξα σοι Κύριε δόξα σοι

Δό ξα σοι Κύ ρι ε Δό ξα σοι

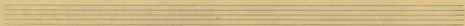
1<sup>ο</sup>
  
  
 εἰς ἅγιος..... εἰς δό ξαν Θε οῦ Πα τρὸς ἀ μὴν

2<sup>ο</sup>
  
  
 εἰς ἅ γι ος, εἰς Κύ ρι ος Ἰ η σοῦς - Χ ρι - σ τος εἰς
   
 δό ξαν Θε οῦ - Πα - τρὸς ἀ μὴν -

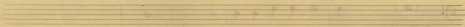
Stabat Mater



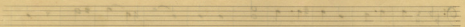
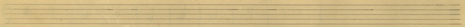
Stabat Mater mater dulcis



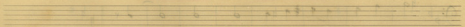
in partu suo



concepit filium unigenitum

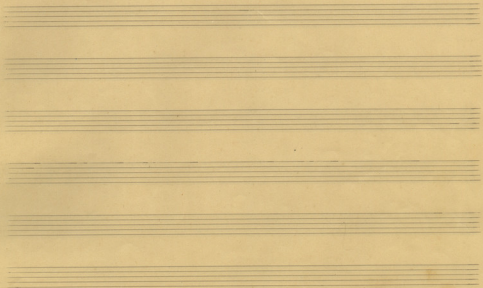


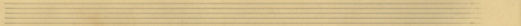
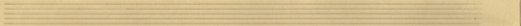
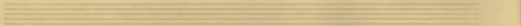
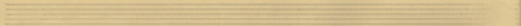
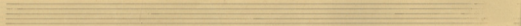
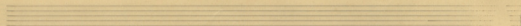
et factus est homo et habitavit in nobis



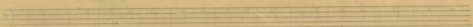
et factus est homo et habitavit in nobis



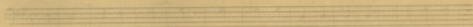




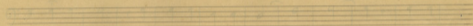
Chanson de Bân



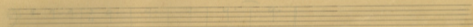
si la par te Bân si si xi ti xer à pa da par Bân pa



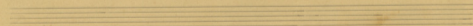
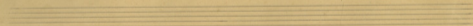
si pa pa si xi ti xer à pa pa si xi ti xer à si

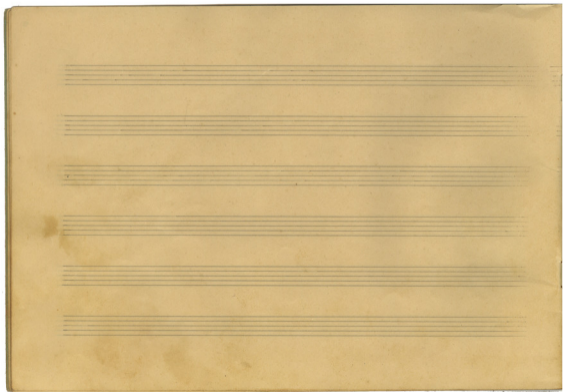


si pa da xer si si da xer da xer - xer - si xi



si xi pa si xi pa -





Εἶδομεν τὸ φῶς

Bass clef, key signature of one sharp (F#), 4/4 time signature. The staff contains rhythmic notation: quarter notes, eighth notes, and a half note with a fermata. The lyrics are written below the staff.

εἶδο μεν τὸ φῶς τὸ ἀχρηθὲς νῦν ἔχλαβο μεν Πνεῦμα

Bass clef, key signature of one sharp (F#), 4/4 time signature. The staff contains rhythmic notation: quarter notes, eighth notes, and a half note with a fermata. The lyrics are written below the staff.

ἐξουσία νεῦν - εὐρομεν πῖν ἀχρηθὲς ἀδὲ

Bass clef, key signature of one sharp (F#), 4/4 time signature. The staff contains rhythmic notation: quarter notes, eighth notes, and a half note with a fermata. The lyrics are written below the staff.

αἶρε τον Τρεῖ ἀδα προσουνοῦν - τει - αὐτη

Bass clef, key signature of one sharp (F#), 4/4 time signature. The staff contains rhythmic notation: quarter notes, eighth notes, and a half note with a fermata. The lyrics are written below the staff.

γὰρ ἡ μᾶς ἔσωσεν -

Four empty musical staves for additional notation.





ΤΕΡΠΑΔΙΟΝ ΜΟΥΣΙΚΗΣ