

14 Μ. 5440

5
9/11
8
8
8

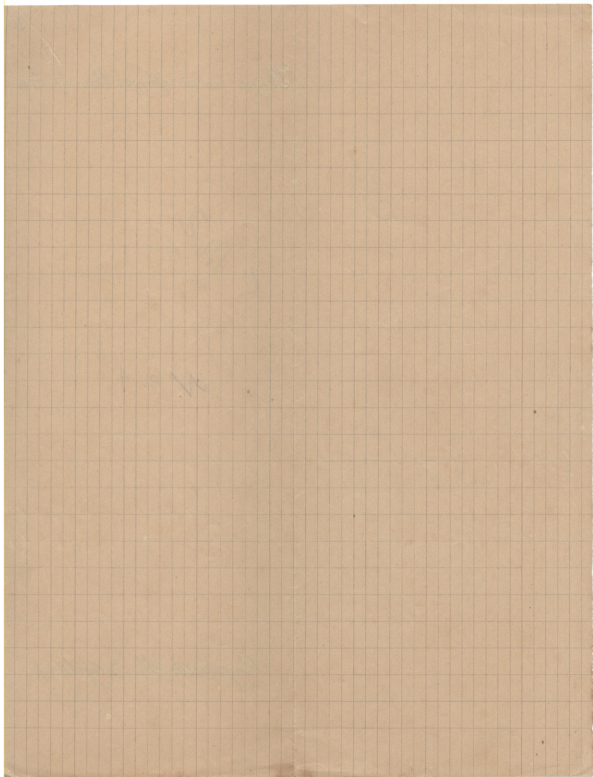
Ὀναμὶς Πέτρου τοῦ Ἐδρεῖο

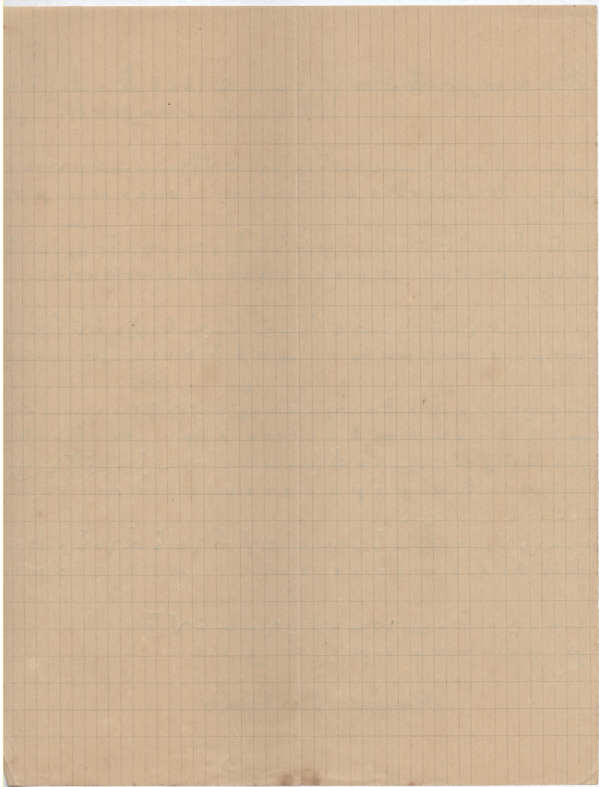
Στοιχός ἐν τοῦ φθόγγου ἑξ ὡς πρῶτῳ.

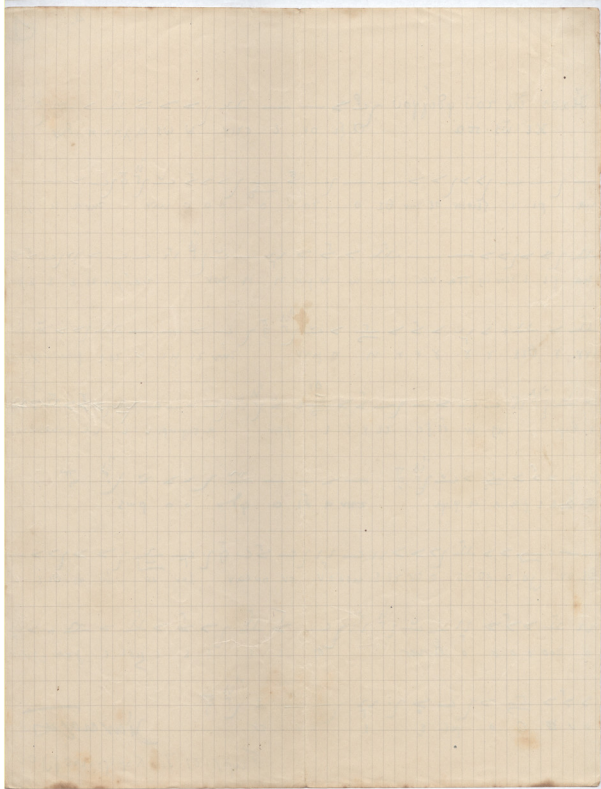
5 0 1 2 3

N^o 1

Αρχιδίας Π. Βλοχίδης







[Faint, illegible handwriting on a piece of aged, yellowed paper with a grid pattern. The text is mostly obscured by fading and bleed-through from the reverse side.]

[Faint, illegible handwriting on lined paper, possibly bleed-through from the reverse side.]

A. D. [illegible]

[illegible]

[illegible]

[illegible]

1830

1830

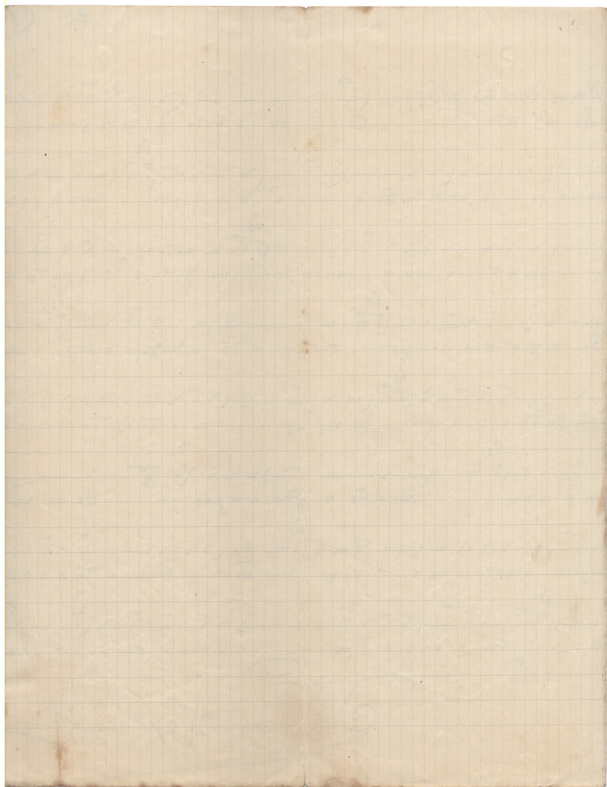
1830

1830

"Οξείον είναι
τόση ως πταί.

N^o 1

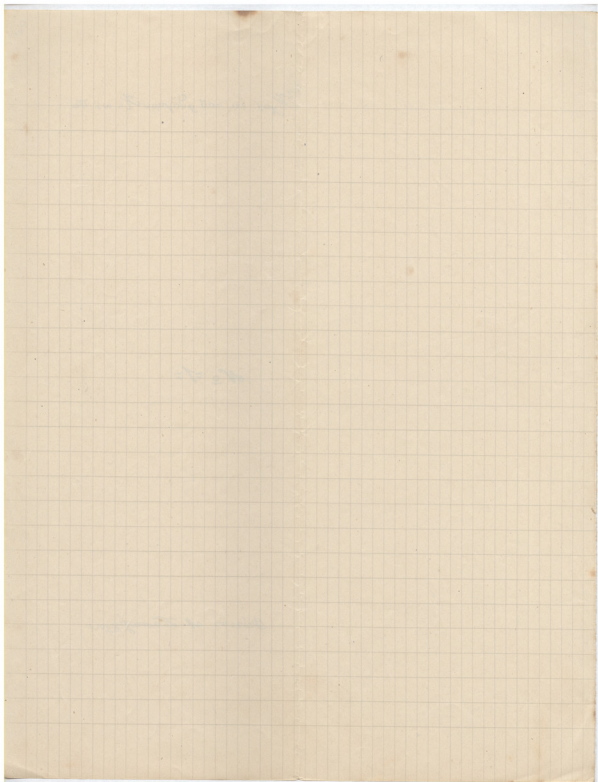
Μιχαήλ Ζ. Λαζαριάδης
Μιχαήλ Ζ. Λαζαριάδης



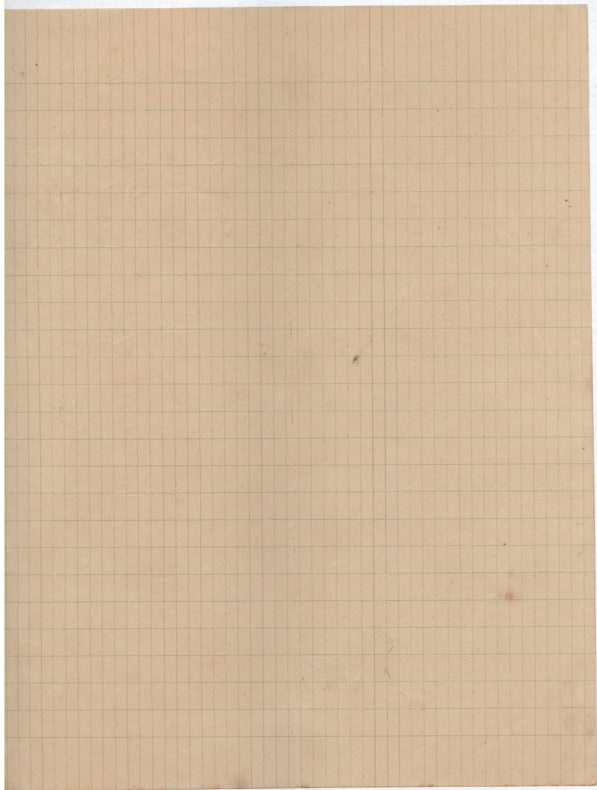
Προς τὸν Ἰωάννην τὸν υἱὸν τοῦ

№ 1

Πάριος ἁγίου Ἰωάννου



[Faint, illegible handwriting on lined paper]



Ἔχεις ἐν τοῦ φθόγγου Κε
ὡς Πά

N^o 1

Γενικός Α. Παπαδόπουλος

Ποσειδώνος ἑπιπέδου

No 1.

Ποσειδώνος ἑπιπέδου

THE ...

11

11

Handwritten text at the top of the page, mostly illegible due to fading and bleed-through.

Handwritten text in the second section, including some faint numbers and symbols.

Handwritten text in the third section, featuring some mathematical-like symbols.

Handwritten text in the fourth section, with some numbers and symbols.

Handwritten text in the fifth section, including some numbers and symbols.

Handwritten text in the sixth section, with some numbers and symbols.

Handwritten text in the seventh section, including some numbers and symbols.

Handwritten text in the eighth section, with some numbers and symbols.

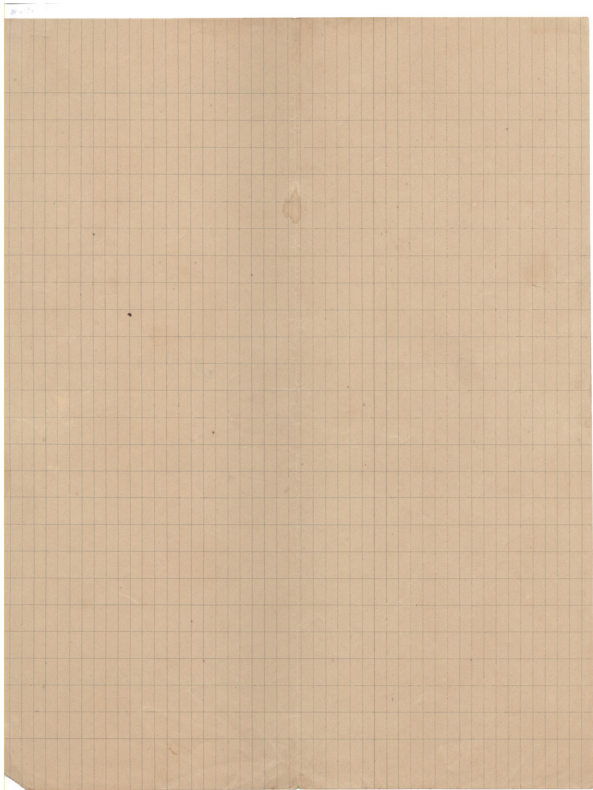
Handwritten text at the bottom of the page, including some numbers and symbols.

$$12 = \frac{7}{2}$$
$$12 = \frac{7}{4}$$
$$12 = \frac{7}{8}$$

Λαοὶ ἐν τοῦ φθόγγου Ἡ' ἢ ἄρ' ἄρ'.

N^o 1

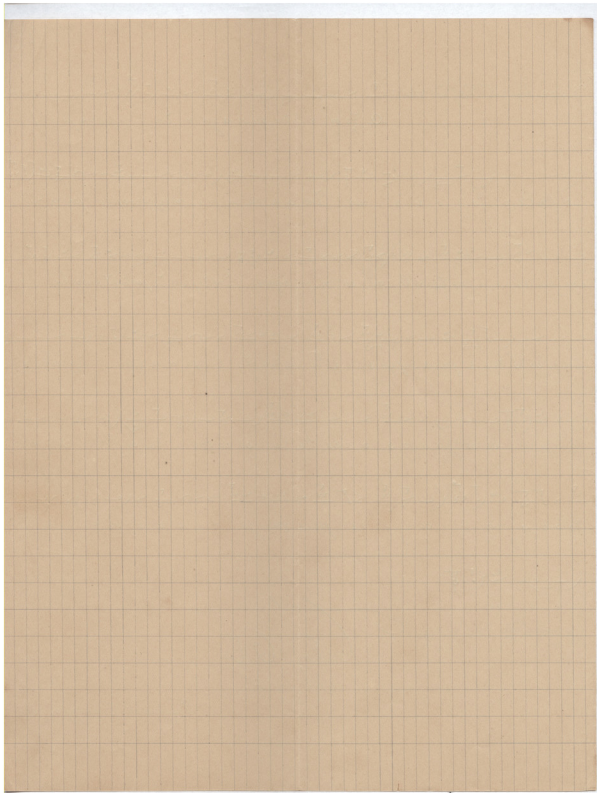
Γεώργιος Α. Παπαδόπουλος.

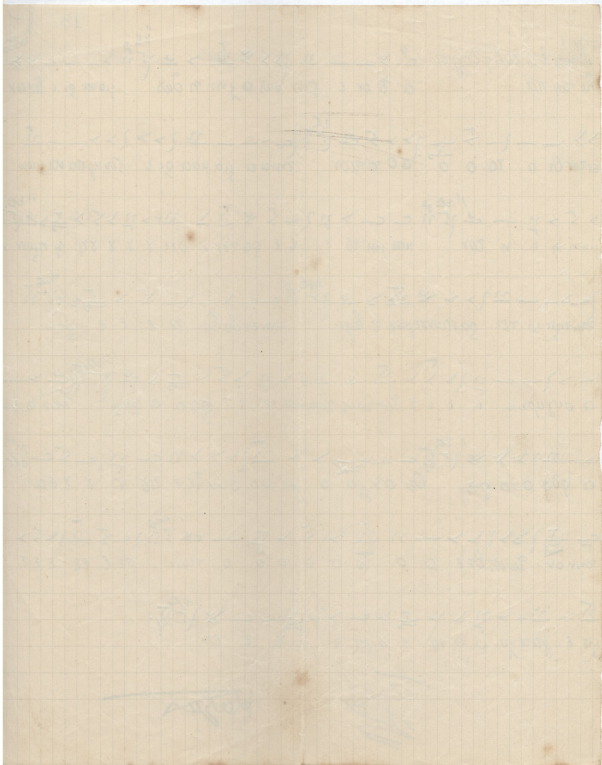


Excor. vulv. He. as. 35a

100-1

Suppur. ch. Foucaquier's

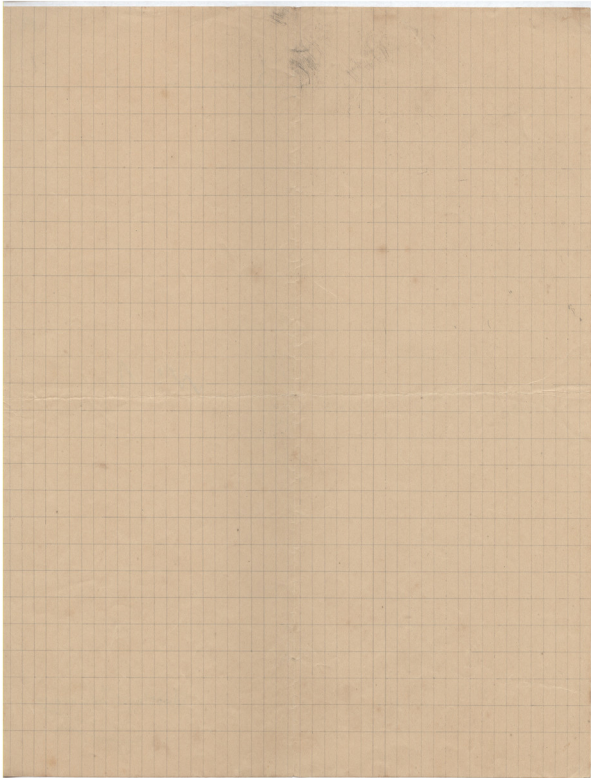


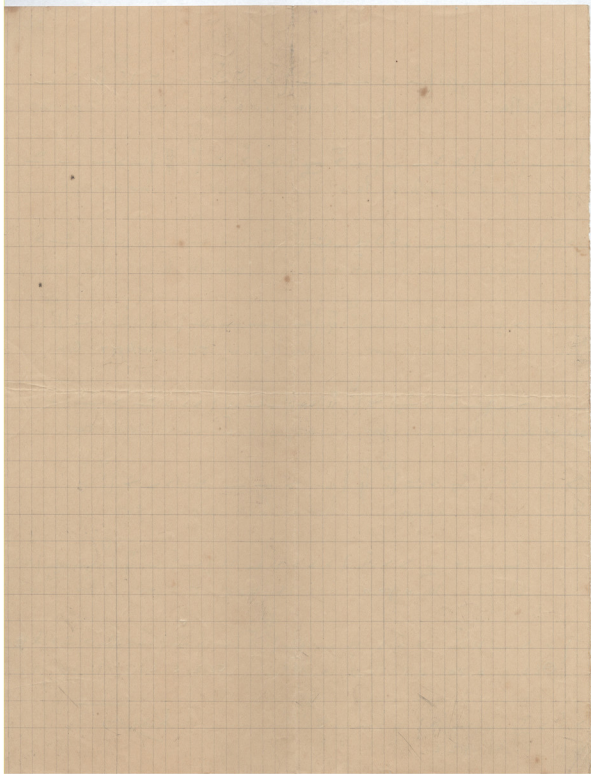


Öfver iclin

N^o 1

Skisslag: J. v. v. v.

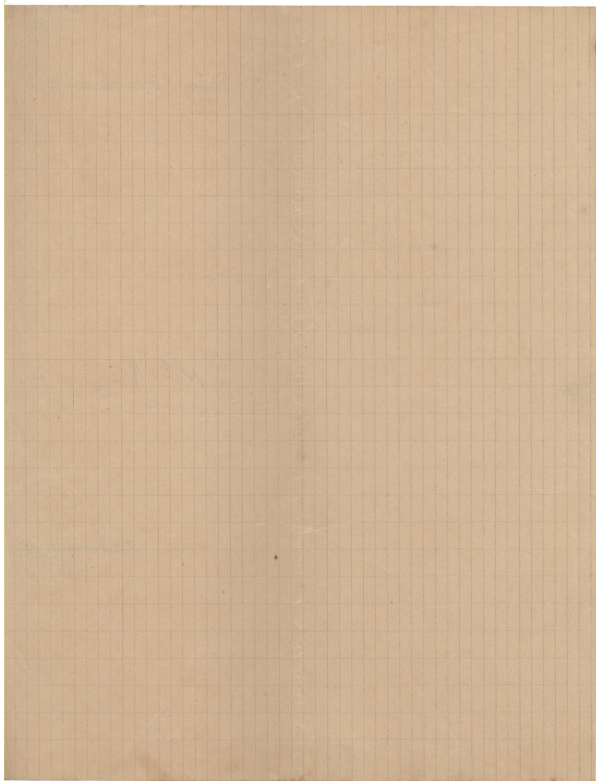


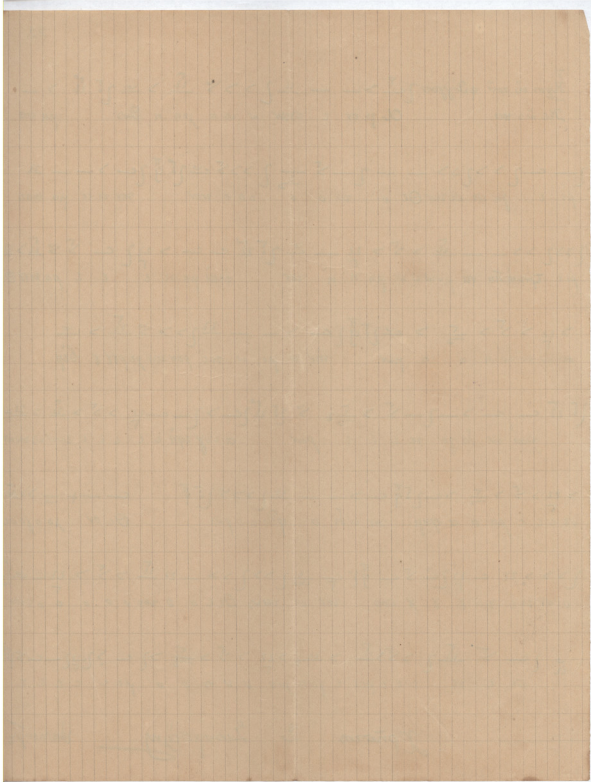


Agor în vir cã rã-
fãc

Nº 1

L. S. Scarpas

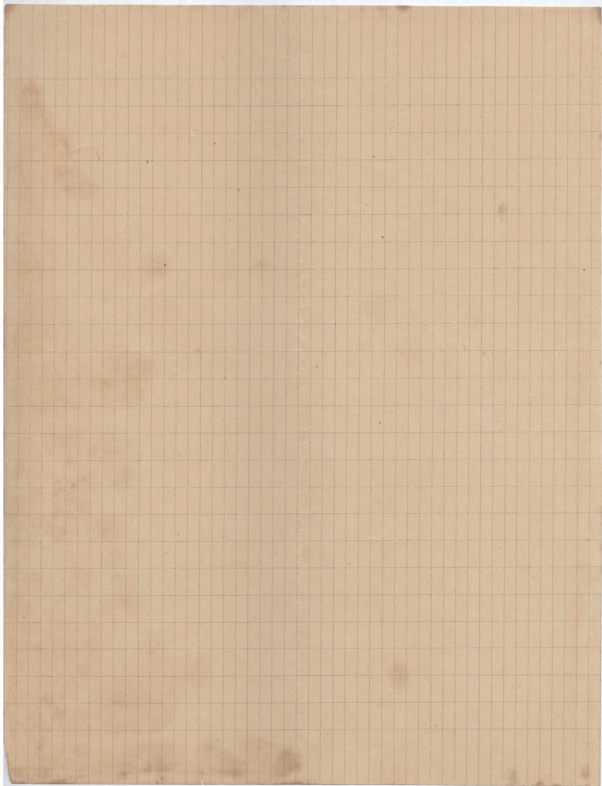


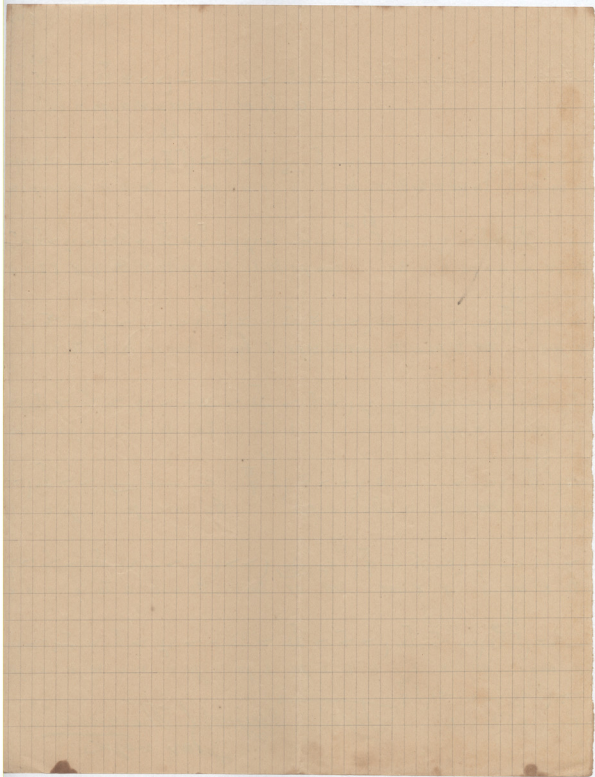


Ἔξοδος ἐν τῷ φλόγγου κβί
ὡς πα

N^o 1

B. L. Hanyweid's





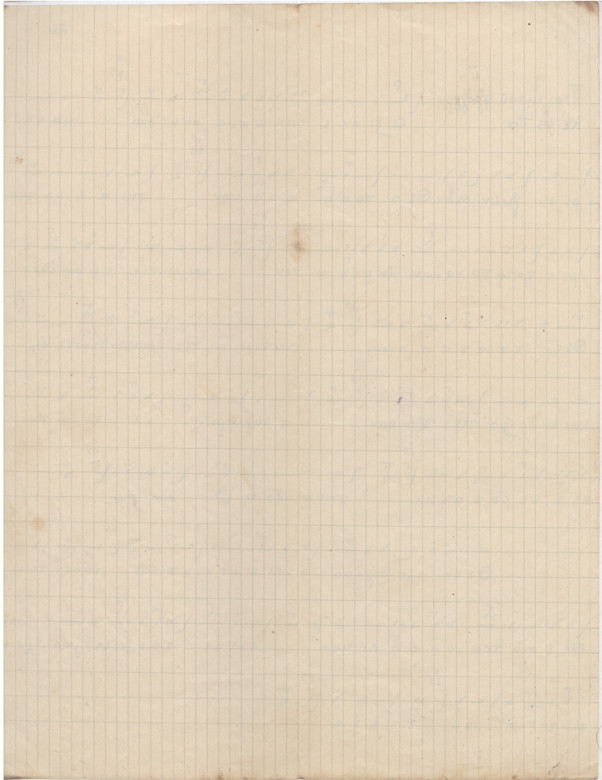
de revestiv eu totu

lo ha ta.

n A.

N=1

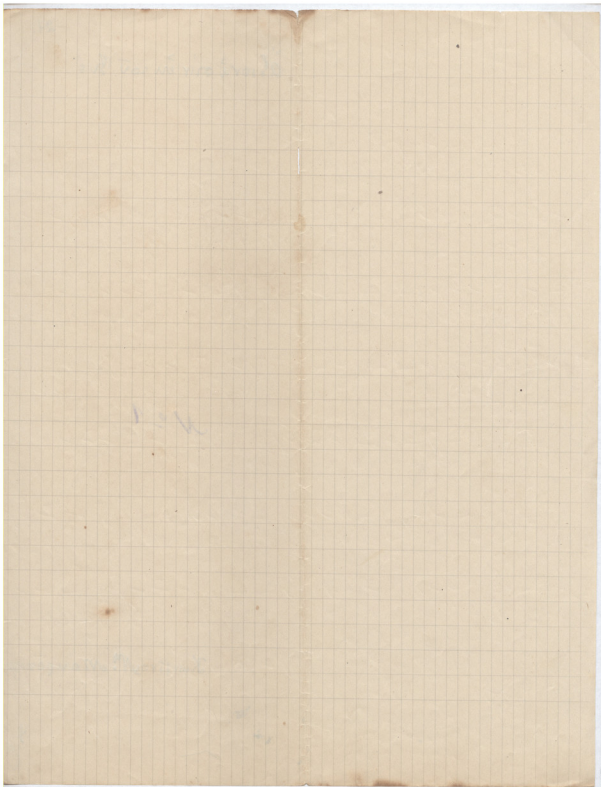
M: 1

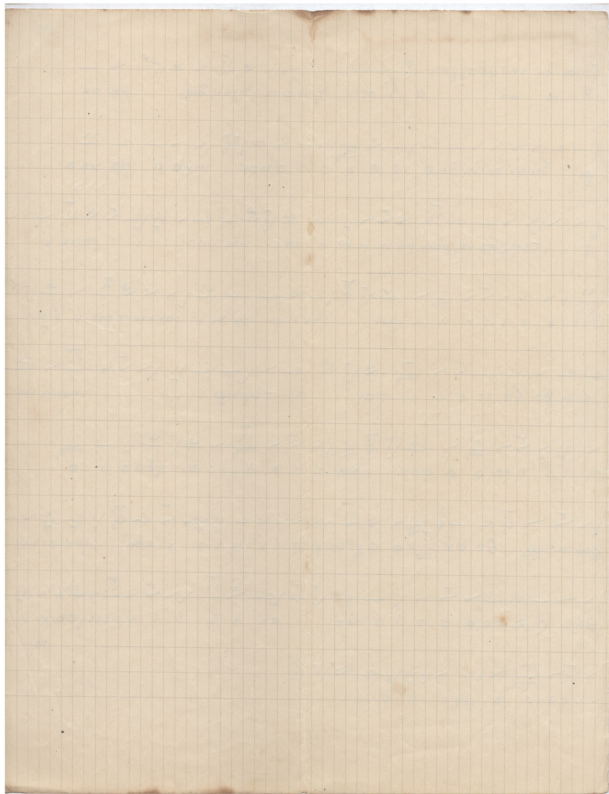


ἀσίου ἰσίου ἐν τῷ θεῷ

N^o 1

Κωνσταντ. Μανουσόπουλος





[Faint, illegible handwriting on lined paper]

[Faint handwriting, possibly a signature or date]

[Faint handwriting, possibly a signature or date]

[Faint, illegible handwriting on lined paper]

