

Χερουβιμόν σύνβομον

Ἦχος Π Β ΠΑ

Θ. Ρωμανός

εἶπ.

Μητρώου Α. Καμαράδου

Οι τα α α α α α α α α α α α α Χε

ε ε ε ε ε ε ε ε ε ε ε ε ε ε ε ε

Χε ρα α α α α α α α α α α α α α α α

α α α α α α α Χε ε ε ε ε ρα βι γ μ

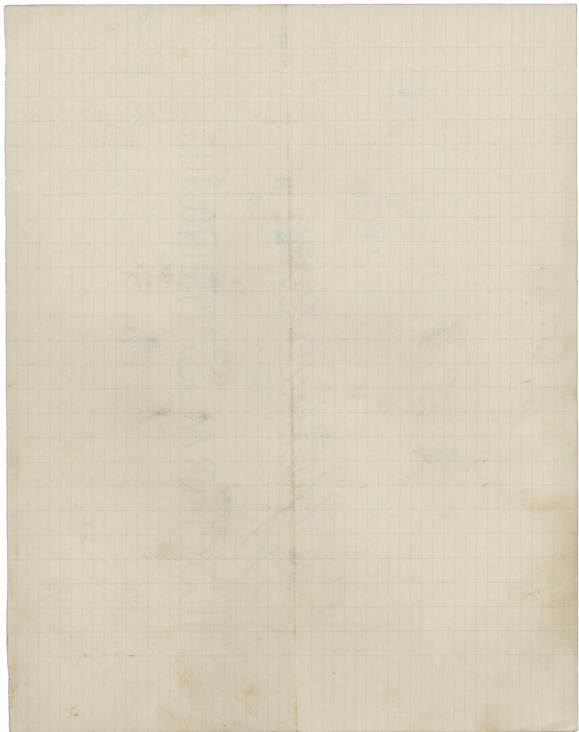
ε ε ε ε ε ε ε ε ε ε ε ε ε ε ε ε

ε ε ε ε ε ε ε ε ε ε ε ε ε ε ε ε

ε ε ε ε ε ε ε ε ε ε ε ε ε ε ε ε

ε ε ε ε ε ε ε ε ε ε ε ε ε ε ε ε

Handwritten text, possibly bleed-through from the reverse side of the page. The text is extremely faint and illegible due to fading and the grid pattern.



Handwritten musical notation with notes and rests on a staff. Includes a double bar line symbol (¶) and a blue '2' above the staff.

Handwritten musical notation with notes and rests. Includes a blue '3' above the staff.

Handwritten musical notation with notes and rests. Includes a double bar line symbol (¶) above the staff.

Handwritten musical notation with notes and rests. Includes a double bar line symbol (¶) and a blue 'Δ' above the staff.

Handwritten musical notation with notes and rests. Includes a double bar line symbol (¶) above the staff.

Handwritten musical notation with notes and rests. Includes a double bar line symbol (¶) above the staff.

Handwritten musical notation with notes and rests. Includes a blue 'Δ' above the staff.

Handwritten musical notation with notes and rests. Includes a double bar line symbol (¶) above the staff.

Handwritten musical notation with notes and rests. Includes a blue 'Δ' above the staff.

COMMISSIONER OF THE GENERAL LAND OFFICE

Wm. H. Murray

Δ

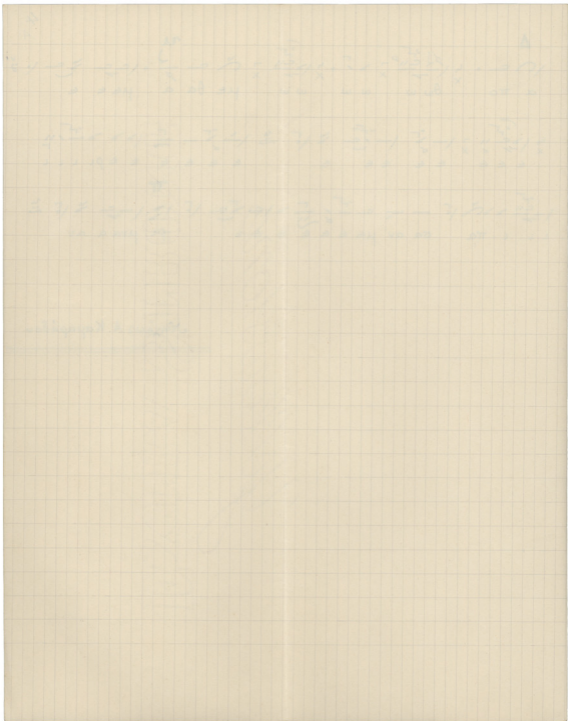
$\int \rho + x^5 \left(\frac{\partial \rho}{\partial \omega} \right) + \int \rho + x^5 \left(\frac{\partial \rho}{\partial \omega} \right) + \int \rho + x^5 \left(\frac{\partial \rho}{\partial \omega} \right) + \int \rho + x^5 \left(\frac{\partial \rho}{\partial \omega} \right) + \int \rho + x^5 \left(\frac{\partial \rho}{\partial \omega} \right)$
 α π ο θ ω ω ω ω ω με θα α με ε ε

$x^5 \left(\frac{\partial \rho}{\partial \omega} \right) + \int \rho + x^5 \left(\frac{\partial \rho}{\partial \omega} \right) + \int \rho + x^5 \left(\frac{\partial \rho}{\partial \omega} \right) + \int \rho + x^5 \left(\frac{\partial \rho}{\partial \omega} \right) + \int \rho + x^5 \left(\frac{\partial \rho}{\partial \omega} \right)$
 ε

Π

$\int \rho + x^5 \left(\frac{\partial \rho}{\partial \omega} \right) + \int \rho + x^5 \left(\frac{\partial \rho}{\partial \omega} \right) + \int \rho + x^5 \left(\frac{\partial \rho}{\partial \omega} \right) + \int \rho + x^5 \left(\frac{\partial \rho}{\partial \omega} \right) + \int \rho + x^5 \left(\frac{\partial \rho}{\partial \omega} \right)$
 ε ε ε π α σα αν με ε ε ε ε ε ε ε ε ρι μνα α αν

Νησιός Α. Καμαράδου



6 Νοεμβρίου 1928

Πα α σ α ν ε η η ν βι λ λ ω ω ε τι λ λ λ βι ω

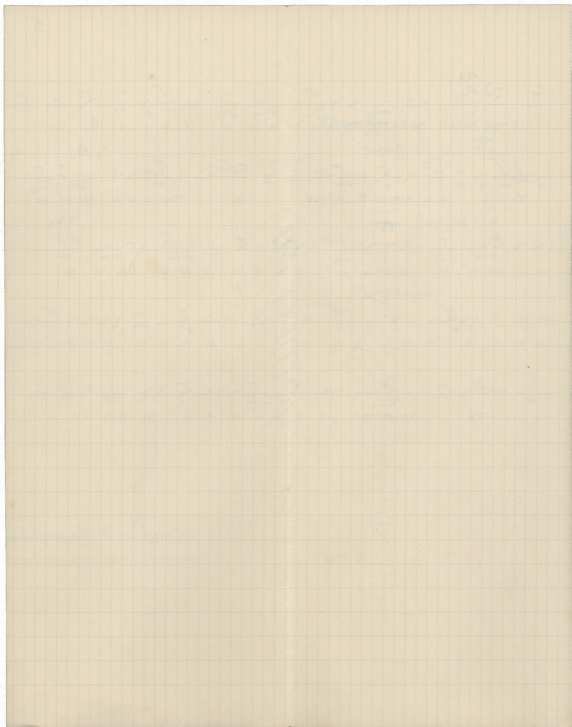
τι λ λ λ λ η η η η η ν α πο ο ο ο ο θω ω ω

ω ω με ε ε ε ε ε ε ε ε ε ε ε ε ε θ α α α

με ε ε ε ε ε ε ε ε ε ε ε ε ε ε ε ε ρι λ λ λ

λ λ λ πα σα α αν με ε ε ε ε ε ε ε ρι μ ν α αν

Χηχέως Α. Καμαράδου



ИЖИТЪВЪ СЪКРОМЪ
Съединеніе

Χερσβιλιόν γύντομον
ἦχος π̄ ε̄ πᾱ

For

Θ. Ρωσιάεωσ
ἐπεξεργασία
Ν. Α. Κ.

Ἀνλερσίγν

N.T.B.

K.T.B.

1928