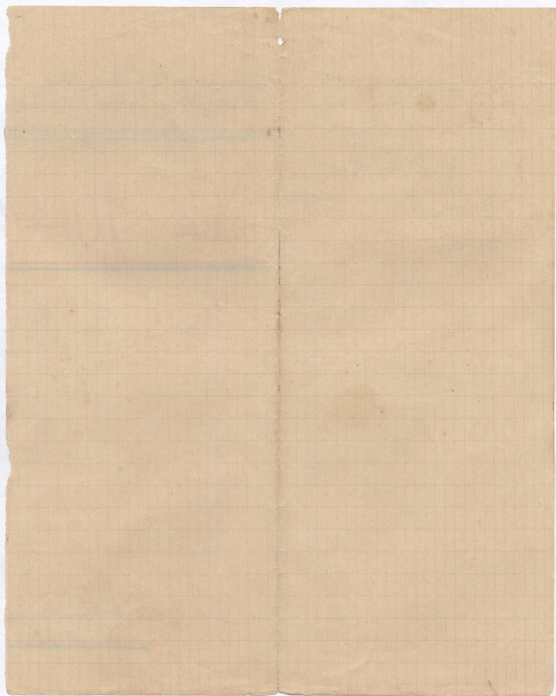


$\delta - \epsilon = \dots = \delta \delta \delta$
 αι. ω. ν. α. γ. ρ. α. α. ρ. α.
 $\epsilon \epsilon - \delta - \gamma - \delta - \mu \delta$
 αι. ω. ν. α. γ. ρ. α. α. ρ. α.
 $\delta \delta \delta \delta \delta \delta \delta \delta \delta \delta \delta$
 αι. ω. ν. α. γ. ρ. α. α. ρ. α.
 $\delta \delta \delta \delta \delta \delta \delta \delta \delta \delta \delta$
 αι. ω. ν. α. γ. ρ. α. α. ρ. α.
 τη. η.

Δύναμι. το Συνερισμένον
 επεξεργασθην υπό Ν. Καμαράδου.

№ 10-

Δ. Α. Παπαδίου



1)

[Faint, illegible handwriting]

[Faint, illegible handwriting]

[Faint, illegible handwriting]

[Faint, illegible handwriting]

[Faint, illegible handwriting]

[Faint, illegible handwriting]

[Faint, illegible handwriting]

[Faint, illegible handwriting]

[Faint, illegible handwriting]

Handwritten text in a cursive script, likely a historical document or letter, written on aged, yellowed paper. The text is mostly illegible due to fading and bleed-through from the reverse side. The document is folded vertically down the center. There is a small circular mark in the top left corner.