

Τρία τραγούδια  
Της υίας γωτίν

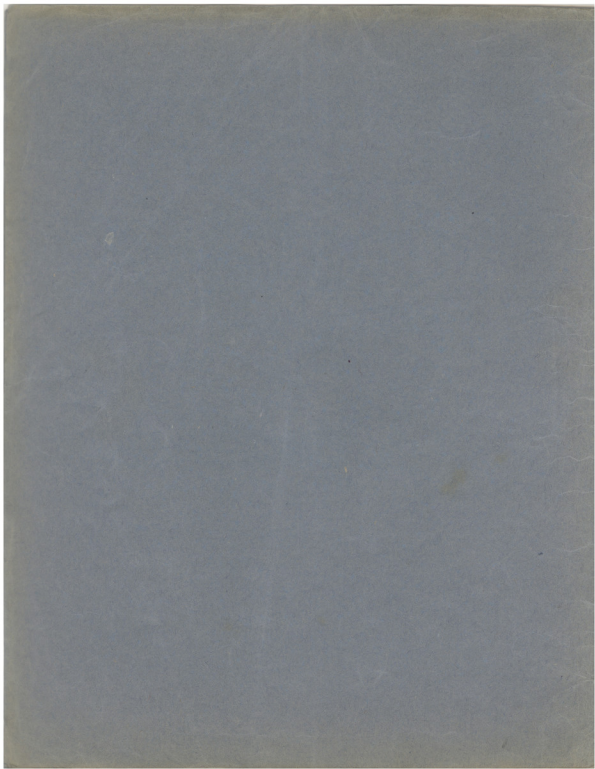
1) Η γαρμασούρα έρωτα

2) Δέπρι γωτίν

3) Ο έρωτα σίχου

J. Παρίση

J. A. Αϊδίου



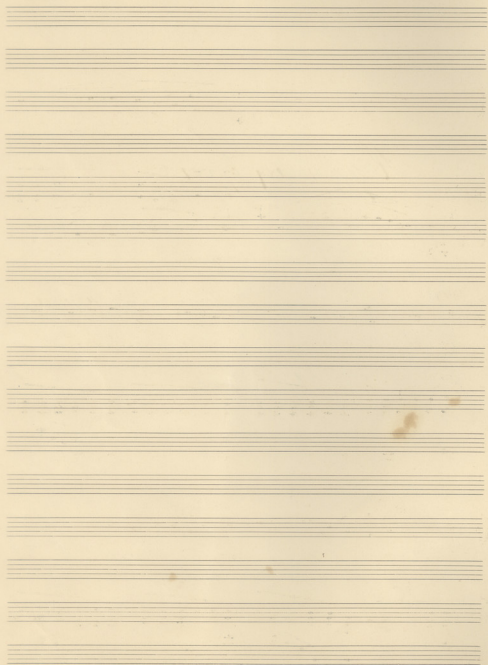
2

Η γαρνοσίτη βρῖος

Ἐραστὴ δὲ ἕλας γυρμί

Ἰωάν. Τρογιάν

Δ. Α. Αἰγίου



*Andante mosso*

Handwritten musical notation for the first system, featuring a vocal line and a piano accompaniment. The vocal line includes the lyrics "L' - era rapa' a'oi' b'ov'er evv uai." and is marked with a *mp* dynamic. The piano accompaniment is in 3/4 time and includes a  $\frac{3}{5}$  chord marking.

*Andante mosso*

Handwritten musical notation for the second system, continuing the vocal and piano parts. The piano accompaniment features a  $\frac{3}{5}$  chord marking.

Handwritten musical notation for the third system, including the vocal line with lyrics "E' vas va' lo' vov'vov, vov'vov a' - vov'v' - va' - za" and piano accompaniment. The tempo changes from *poco rit.* to *al tempo*. A  $\frac{3}{5}$  chord marking is present.

Handwritten musical notation for the fourth system, primarily piano accompaniment. It includes a *poco rit.* marking and a  $\frac{3}{5}$  chord marking.

Handwritten musical notation for the fifth system, including the vocal line with lyrics "lo' - oo bad'vici vov'v'lo' - oo vov'v' - vov'v' - pa'." and piano accompaniment. The tempo changes from *poco rit.* to *al tempo*. A  $\frac{3}{5}$  chord marking is present.

Handwritten musical notation for the sixth system, primarily piano accompaniment. It includes a *poco rit.* marking and a *cresc.* (crescendo) marking.



*mf* *Sosten.* *al tempo*

αιν' αυ' λαιραρια σπρησπημιν η βρη - ον.

*mf* *Sosten.* *al tempo*

*piu*

*p*

νι ο λαι το βραυρι χι - θυσε τ' αυ' εν ουρα νεφ - ον,

*mf*

ο - γα ιου - σπι - νι - ον γε γινωσκει νε - φηρα γαπα -

*poco cresci*

*Allargando* *Meno mosso*

yi-ra vai tá- des ué-ju- an-ônus

né-ônuos yi yira

*Tempo!*

Kauá, dei póto-

*dimin.*



*cresc. molto*

χάριτος ἀνα-τε-λοῦ-σθαι ὑ-ψὸς σου αὐτὸ λαλοῦ-σθαι

*con calore*  
*cresc.*

σοῦ-δια σου τοῖς ἁγίοις ἐξ-η-γῶ σου πρὸς ἡ-μᾶς γὰρ σου

*ritard.* *al tempo*

νεκρῶν τῶ ἐπιφανῶς μου ἐπι-νο-ῶ-σθαι σου

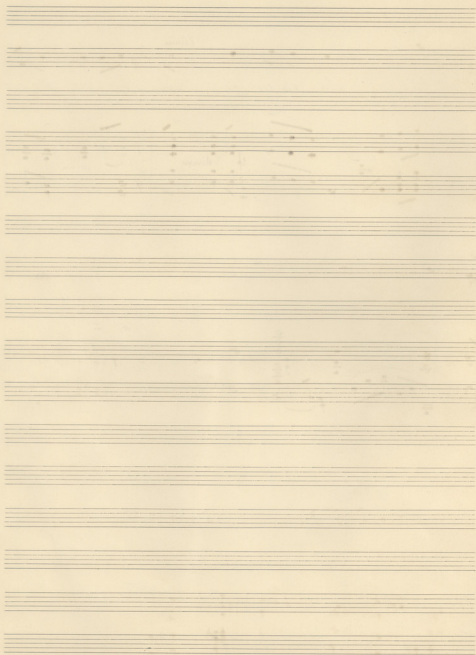


Handwritten musical score for voice and piano. The vocal line is in 2/4 time, with lyrics: "fri- ma gi- si vai yör- des ör sov". The piano accompaniment includes chords and melodic lines in 2/4 and 3/4 time signatures. The word "dimin." is written above the piano part.

Handwritten musical score for voice and piano. The vocal line is in 4/4 time with lyrics: "di- vr. -". The piano accompaniment features complex chordal textures and melodic lines in 4/4 and 3/4 time signatures. The word "dimin." is written above the piano part.

A single line of handwritten musical notation in 2/4 time, consisting of a sequence of notes and rests.

Handwritten musical score for piano, showing chordal structures and melodic fragments in 2/4 and 3/4 time signatures.



Σεπρή μου ερίδα

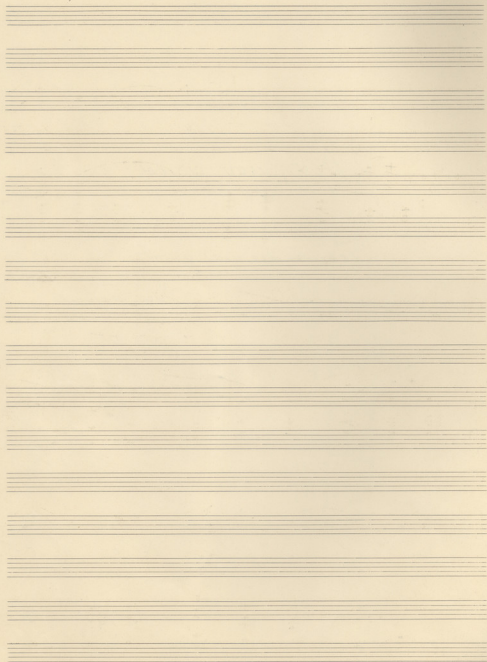
Τραγῶδι δι' υἱῶν θυμῶν

Θωρ. Πόρην

Δ. σ. σ. σ. σ. σ.

5





Quasi adagio

Zixaraji dua, ra' oti

oti oti apir ra' oi' yvriou

oanti nai oti - to' e' o' piza u' e' - u' - taf' a' o'



Handwritten musical score for the first system. The vocal line is in treble clef with a key signature of two flats and a 4/4 time signature. The lyrics are "dion ois na- dion ra ar-piura,". The piano accompaniment is in bass clef, featuring a "crescendo" marking and complex chordal textures.

dion ois na- dion ra ar-piura,

*crescendo*

Handwritten musical score for the second system. The vocal line includes the lyrics "na- dion ra napl-pova, nijsen-to-ol-". Performance markings include "poco rit.", "Espressivo", "ritempo 3", and "Intempo". The piano accompaniment features "mf", "dim", and "Espressivo" markings, with some notes marked with "9".

na- dion ra napl-pova, nijsen-to-ol-

*poco rit.* *Espressivo*  
*ritempo 3*

*mf* *dim* *Espressivo*  
*Intempo*

Handwritten musical score for the third system. The vocal line includes the lyrics "no-gara nijsen na dion-pova ois". The piano accompaniment continues with complex textures and includes a large blacked-out section in the final measure.

no-gara nijsen na dion-pova ois



16 - oap̄p̄u l̄o ep̄ōȳōv.

*crescendo*

*più f.* *dimin.* *m. d.* *rit.*

*Andante mosso*  
*sostenuta* *a tempo*

0 - tar oap̄p̄ōv̄ō - vā gr̄ī ū - vā n̄ ep̄ōv̄ō -

*Andante mosso*  
*sostenuta* *a tempo*



Handwritten musical score for the first system. The vocal line is in treble clef with a key signature of two flats and a 4/4 time signature. The lyrics are "in sovralta n-la it-p-ri". The piano accompaniment is in bass clef. The word "cresca" is written above the piano part.

in sovralta n-la it-p-ri

cresca

Handwritten musical score for the second system. The vocal line continues with the lyrics "ri-ba, uia' bi it-p-ri sovralta". The piano accompaniment includes the instruction "dimin.".

ri-ba, uia' bi it-p-ri sovralta

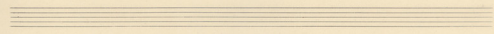
dimin.

Handwritten musical score for the third system. The vocal line includes the lyrics "p-ri, p-ri va' o' va'". The piano accompaniment includes the instruction "dimin.".

p-ri, p-ri va' o' va'

dimin.





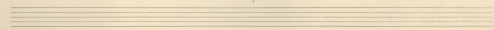
*mf*  
 or-ov *mf* *cracm* *cracm*  
 ysi-te uati- ra uaple-pw

*cracm*

*Sostenuto*

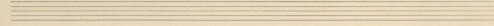
*Sostenuto*  
 ysi-te uo-tai- fu oioo- -

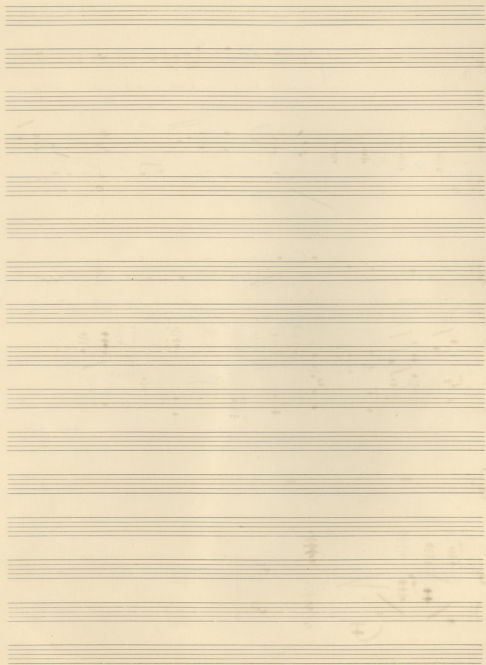
*f* *dimin* *cracm*



*ff*

*ff*





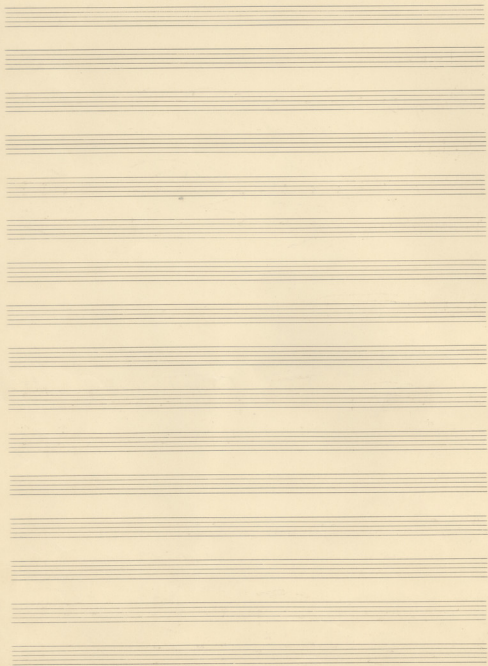
Ὁ σπυγὸς οὐρανός.

Ἐργασθε δὲ ὡς ἰσχυροὶ

τῷ κυρίου

δ. σ. ἀντίφωτος





Moderato

Handwritten musical score for the first system. The top staff is a vocal line with lyrics: "Encinuous u' - D' - ywoes Si - yas ra". The bottom staff is a piano accompaniment. The tempo is marked "Moderato". The key signature has two sharps (F# and C#), and the time signature is 2/4.

Handwritten musical score for the second system. The top staff is a vocal line with lyrics: "glai - zar Si - yas". The bottom staff is a piano accompaniment. The tempo is marked "In tempo". The key signature has two sharps (F# and C#), and the time signature is 2/4. Performance markings include "rall." and "dimin.".

Handwritten musical score for the third system. The top staff is a vocal line with lyrics: "yo - ro yrali o' - woiowoz". The bottom staff is a piano accompaniment. The tempo is marked "In tempo". The key signature has two sharps (F# and C#), and the time signature is 2/4.



υιωνος πατρὸς  
ου̇ν ο̇λι-γος

diminu tenacemente

ἰεὺ πατὸρ α-πα-  
αν̇ ου̇ν Χω-

πῶς  
ρο̇ ο̇ι θυ-γι-  
ψῆ

obvoe tor, juvāns obvoe tor e' uōvūs dā ro

yi - fi rūs iōv dā tē - ē - xpus

ten.

poco dimm

dimin e rallen - Sostenuto

ō - xi yia yē - ra, yia dē - nā -

dimin e rallen - Sostenuto



tempo I  
and poco meno mosso

De-o-  
poco meno mosso  
poco and.  
De-

di-gnoe vai dai-gi o-pi-je vai des

poco cresc.  
cresc. molto  
dimin.

ye je-tas-ti yi

poco crescendo

ped.



*Con anima  
più mosso*

la' yw-uq' eor ya'-la uai xifor

*Più mosso*

*crece*

o- jay loj' all' xos yor o'a- yi-

*crecen*

*l'osta nouud'-la*

