

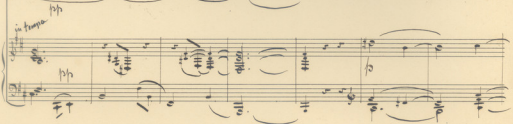
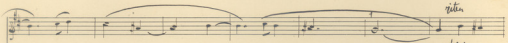
*Tanzballade N<sup>o</sup> 2.*

*für Violine und Klarinet*

*V. L. Lialies*

*Allegro moderato*

*dolce*



*espressivo.*

*sempre f*

*mf*

*f*

*cresc. molto*

*mf*

*f*

*cresc. molto*

*f*

*f*

This page contains a handwritten musical score for a piece featuring a vocal line and a piano accompaniment. The score is organized into three systems, each with a vocal staff on top and a piano staff on the bottom. The piano part is written in a grand staff (treble and bass clefs).

**System 1:**  
The vocal line begins with a melodic phrase marked *pp*. The piano accompaniment starts with a bass line and chords, also marked *pp*. A *foro cresc.* marking is present in the piano part towards the end of the system.

**System 2:**  
The vocal line continues with a melodic phrase marked *pp*. The piano accompaniment features a more active bass line with chords. The system includes markings for *riten.* (ritardando) and *a tempo* in both parts, and a *mf* dynamic marking in the piano part.

**System 3:**  
The vocal line concludes with a melodic phrase marked *dimin.* (diminuendo). The piano accompaniment also concludes with a melodic phrase marked *dimin.* and a *mf* dynamic marking.

Handwritten musical score for piano and violin. The score is written on six systems, each with a violin staff on top and a piano staff on the bottom. The music is in 4/4 time and features various dynamics and performance instructions.

- System 1:** Violin staff begins with a half note, followed by quarter notes. Piano staff has a half note chord. Dynamics: *dimin.*
- System 2:** Violin staff has quarter notes. Piano staff has chords with slurs. Dynamics: *dimin.*
- System 3:** Violin staff has quarter notes. Piano staff has chords with slurs. Dynamics: *dimin.*
- System 4:** Violin staff has quarter notes. Piano staff has chords with slurs. Dynamics: *poco a poco cresc.*
- System 5:** Violin staff has quarter notes. Piano staff has chords with slurs. Dynamics: *poco a poco cresc.*
- System 6:** Violin staff has quarter notes. Piano staff has chords with slurs. Dynamics: *dimin.*

Handwritten musical score on aged paper, consisting of six systems of staves. The notation includes treble and bass clefs, notes, rests, and dynamic markings.

*10*  
*Piu mosso*

*Piu mosso*

*10*

*accelerando poco a poco*

*accelerando poco a poco*

*Presto*

*ff*

*Presto*

*diminu... ritardando*

*Moderato molto espressivo*

*mf*

*Moderato*

2/4

1 2/4

3/4

3

3

3

Allegro Moderato  
3/4 = 2/4

Allegro Moderato  
3/4 = 2/4

*mf*

*poco cresciuto*

*mf*

*dimin.* *p*

*mf*

*mf*

*dimin.* *p*

*mf*

*p*

*cresc. molto* *f*

*p*

*mf*

*p*

*cresc. molto*

*f*

*p*

*mf*

*marcato*

*cresc.*

*mf*



Handwritten musical score, first system. The top staff is heavily scribbled out with diagonal lines. The bottom staff contains some legible notes and rests.

Handwritten musical score, second system. The top staff is heavily scribbled out. The bottom staff contains notes with dynamic markings like *f* and *ff*.

Handwritten musical score, third system. The top staff contains notes with slurs and dynamic markings. The bottom staff contains notes with slurs.

Handwritten musical score, fourth system. The top staff contains notes with slurs and dynamic markings. The bottom staff contains notes with slurs. The text *con forza in tempo 4* is written above the staff.

Handwritten musical score, fifth system. The top staff contains notes with slurs and dynamic markings. The bottom staff contains notes with slurs.

Handwritten musical score, first system. The top staff contains a melodic line with various dynamics including *pp*, *mp*, and *ff*. The bottom staff contains a piano accompaniment with chords and arpeggios.

Handwritten musical score, second system. The top staff continues the melody with a *diminu.* marking. The bottom staff features piano accompaniment with *pp* dynamics and *diminu.* markings.

Handwritten musical score, third system. The top staff includes dynamics *pp*, *mp*, and *acceler. cresc. molto*. The bottom staff includes dynamics *pp*, *mp*, and *acceler.* with *ritenuto* markings above the staff.

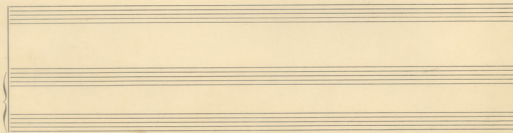
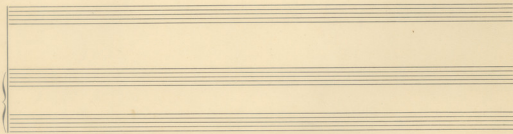
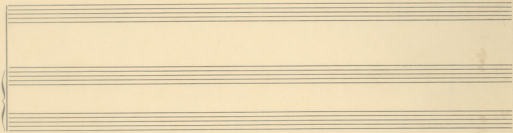
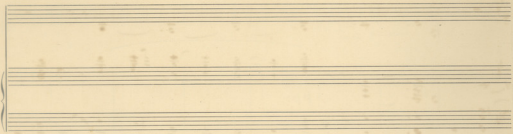
Handwritten musical score, fourth system. The top staff begins with *In tempo* and includes dynamics *f* and *diminu.*. The bottom staff includes dynamics *f*, *pp*, and *diminu.*.

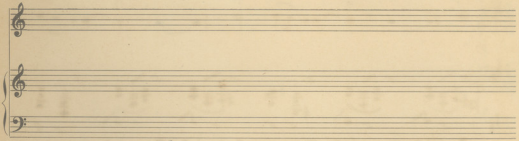
Handwritten musical score for a single system. The top staff is in treble clef and contains notes with stems, some marked with "dim." and "p". The bottom staff is in bass clef and contains notes with stems, some marked with "p" and "f". There are various musical notations including slurs, ties, and dynamic markings.

Handwritten musical score for a two-staff system. The top staff is in treble clef and contains notes with stems, some marked with "p" and "f". The bottom staff is in bass clef and contains notes with stems, some marked with "p" and "f". There are various musical notations including slurs, ties, and dynamic markings.

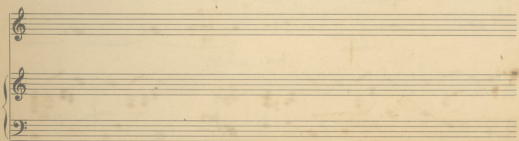
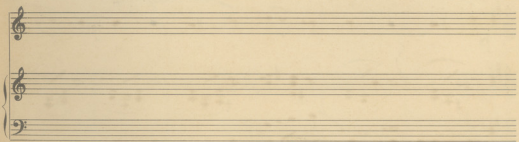
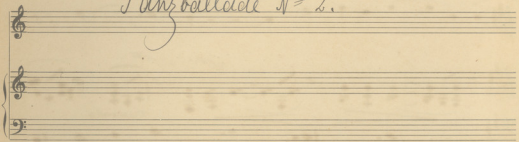
A system of three empty musical staves with treble clefs, intended for a three-part setting.

A system of three empty musical staves with treble clefs, intended for a three-part setting.





*Tanzballade N<sup>o</sup> 2.*



*Allegro moderato  
dolce*

Handwritten musical notation for the first system. It consists of a treble clef staff and a bass clef staff. The treble staff contains a melodic line with notes and rests, some marked with a fermata. The bass staff contains a harmonic accompaniment with chords and moving lines. The key signature is one sharp (F#) and the time signature is 3/4.

Handwritten musical notation for the second system. It consists of a treble clef staff and a bass clef staff. The treble staff contains a melodic line with notes and rests, some marked with a fermata. The bass staff contains a harmonic accompaniment with chords and moving lines. The key signature is one sharp (F#) and the time signature is 3/4. Performance markings include "riten." and "a tempo" above the treble staff, and "riten." and "a tempo" above the bass staff, along with "crescendo" below the bass staff.

Handwritten musical notation for the third system. It consists of a treble clef staff and a bass clef staff. The treble staff contains a melodic line with notes and rests, some marked with a fermata. The bass staff contains a harmonic accompaniment with chords and moving lines. The key signature is one sharp (F#) and the time signature is 3/4.

Handwritten musical notation for the fourth system. It consists of a treble clef staff and a bass clef staff. The treble staff contains a melodic line with notes and rests, some marked with a fermata. The bass staff contains a harmonic accompaniment with chords and moving lines. The key signature is one sharp (F#) and the time signature is 3/4. Performance markings include "riten." and "a tempo" above the treble staff, and "riten." and "a tempo" above the bass staff, along with "dimin." below the bass staff.

Handwritten musical score for piano and voice. The score consists of six systems of staves. The top staff is a vocal line. The piano accompaniment is written in two staves (treble and bass clef). The score includes various performance markings and dynamics:

- espressivo* (written above the piano accompaniment in the second system)
- sempre p* (written above the piano accompaniment in the second system)
- mf* (mezzo-forte) dynamic markings in the piano accompaniment.
- rit* (ritardando) markings in the piano accompaniment.
- ritard* (ritardando) markings in the piano accompaniment.
- ritardando* (written above the piano accompaniment in the fifth system)
- cresc. molto* (crescendo molto) markings in the piano accompaniment in the fifth and sixth systems.
- f* (forte) dynamic markings in the piano accompaniment in the fifth and sixth systems.
- Time signature changes from 2/4 to 3/4 in the fifth system.
- Key signature changes from one sharp (F#) to two sharps (F# and C#) in the fifth system.

Handwritten musical score system 1. It consists of a single treble clef staff and a grand staff (treble and bass clefs). The treble staff contains a melodic line with various ornaments and a fermata. The grand staff contains a complex accompaniment with many notes and rests. A dynamic marking *p* is present. There are some handwritten annotations like "2/2" and "10" above the treble staff.

Handwritten musical score system 2. It consists of a single treble clef staff and a grand staff. The treble staff has a melodic line with a fermata and a dynamic marking *p*. The grand staff has a bass line with notes and rests. There are some handwritten annotations like "3" above the treble staff.

Handwritten musical score system 3. It consists of a single treble clef staff and a grand staff. The treble staff has a melodic line with a fermata and a dynamic marking *p*. The grand staff has a bass line with notes and rests. The text *poco crescendo* is written in the grand staff. There are some handwritten annotations like "mf" and "5" in the grand staff.

Handwritten musical score system 4. It consists of a single treble clef staff and a grand staff. The treble staff has a melodic line with a fermata. The grand staff has a complex accompaniment with many notes and rests.



*riten.* *a tempo*

*riten.* *a tempo*  
*crescendo*

*dimin* *mf* *dimin*

*dimin* *mf* *dimin*

*dimin*

*dimin*



*poco a*

*poco a*

*poco crescendo*

*poco crescendo*

*dimin* *p* *crescendo*

*mf* *dimin*

*piu mosso*

This is a handwritten musical score on aged, yellowed paper. It consists of seven systems of music, each with a vocal line (treble clef) and a piano accompaniment (grand staff). The score includes various dynamic markings such as *poco a*, *poco crescendo*, *dimin*, *p*, *mf*, and *piu mosso*. The notation features complex rhythmic patterns, including sixteenth and thirty-second notes, and some passages with dense chordal textures. The paper shows signs of age, including some staining and discoloration.

Handwritten musical notation for the first system, featuring a treble clef staff with a melodic line and a bass clef staff with accompaniment.

Handwritten musical notation for the second system, including a treble clef staff with a melodic line and a bass clef staff with accompaniment.

Handwritten musical notation for the third system, showing a treble clef staff with a melodic line and a bass clef staff with accompaniment.

Handwritten musical notation for the fourth system, featuring a treble clef staff with a melodic line and a bass clef staff with accompaniment.

Handwritten musical notation for the fifth system, including a treble clef staff with a melodic line and a bass clef staff with accompaniment.

Handwritten musical notation for the sixth system, showing a treble clef staff with a melodic line and a bass clef staff with accompaniment.

Handwritten musical notation for the seventh system, featuring a treble clef staff with a melodic line and a bass clef staff with accompaniment.

Handwritten musical notation for the eighth system, including a treble clef staff with a melodic line and a bass clef staff with accompaniment.

*poco a poco*

*poco a poco*





Handwritten musical score for the first system. It consists of a treble clef staff with a melodic line and a grand staff (treble and bass clefs) with piano accompaniment. The piano part includes chords and arpeggiated figures. There are triplets marked with a '3' above the notes.

*Allegro moderato*

*Tempo I<sup>a</sup>*

Handwritten musical score for the second system. It includes a treble clef staff with a melodic line and a grand staff with piano accompaniment. The tempo is  $3/4 = 2/4$ . Performance markings include "Con espressione", "mf", and "poco crescen."

Handwritten musical score for the third system. It includes a treble clef staff with a melodic line and a grand staff with piano accompaniment. Performance markings include "dimin" and "cres".

Handwritten musical score for the fourth system. It includes a treble clef staff with a melodic line and a grand staff with piano accompaniment. Performance markings include "cres", "mf", and "cres".

Handwritten musical score, first system. The top staff is a single melodic line in G major, 2/4 time, with a *cresc. molto* marking. The bottom two staves are piano accompaniment in G major, 2/4 time, also marked *cresc. molto*. The system concludes with a *rit.* (ritardando) and a *2/4* time signature change.

Handwritten musical score, second system. The top staff continues the melodic line, marked *mf* and *marcato*. The piano accompaniment in the bottom two staves features a rhythmic pattern of eighth notes and rests, with some notes beamed together.

Handwritten musical score, third system. The top staff is marked *poco sost.* (poco sostenuto) and *cresc.* (crescendo). The bottom two staves are piano accompaniment, also marked *poco sost.*. The system ends with a *rit.* marking.

Handwritten musical score, fourth system. The top staff continues the melodic line, marked *rit.* (ritardando). The piano accompaniment in the bottom two staves features a complex rhythmic pattern with many beamed notes. The system concludes with a *rit.* marking and a *5* (quinta) fingering instruction.

Handwritten musical score for the first system. The top staff is in treble clef and the bottom staff is in bass clef. Both staves contain notes with stems and beams. The word "crescenda" is written in cursive at the end of each staff.

Handwritten musical score for the second system. The top staff has the instruction "senza ritardare e con forza" written above it. The bottom staff has "Allo." written below it. Both staves contain notes and stems.

Handwritten musical score for the third system. The top staff has "dimin.." written below it. The bottom staff has "dimin" written below it. Both staves contain notes and stems.

Handwritten musical score for the fourth system. The top staff has "dimin" written below it. The bottom staff has "dimin" written below it. Both staves contain notes and stems.

*Sostenuto  
molto espressivo*

Handwritten musical score for the first system. The vocal line (top staff) begins with a *pp* dynamic and includes markings for *mp*, *Sostenuto*, and *accelerando*. The piano accompaniment (bottom two staves) includes markings for *mp* and *accelerando*. The key signature is one sharp (F#).

Handwritten musical score for the second system. The vocal line (top staff) includes markings for *Al tempo* and *cresc. molto*. The piano accompaniment (bottom two staves) includes markings for *Al tempo* and *cresc.*. The key signature is one sharp (F#).

Handwritten musical score for the third system. The vocal line (top staff) includes markings for *dimin.* and *mp*. The piano accompaniment (bottom two staves) includes markings for *dimin.*. The key signature is one sharp (F#).

Handwritten musical score for the fourth system. The vocal line (top staff) includes markings for *pp* and *ppp*. The piano accompaniment (bottom two staves) includes markings for *ppp*. The key signature is one sharp (F#).



