

# Tanzfellade N<sup>o</sup> 3

*allegro*

Handwritten musical notation for the first system, including a treble clef, a key signature of one sharp (F#), and a 2/4 time signature. The notation features a series of chords and a triplet of eighth notes.

Handwritten musical notation for the second system, continuing the piece with various rhythmic patterns and chord progressions.

Handwritten musical notation for the third system, showing more complex rhythmic figures and chord structures.

Handwritten musical notation for the fourth system, featuring a treble clef and a key signature of one sharp. The notation includes a section that is crossed out with a large diagonal line.

Handwritten musical notation for the fifth system, starting with a treble clef and a key signature of one sharp. The notation includes a section that is crossed out with a large diagonal line. The word "Andante" is written above the notation.

Handwritten musical notation, first system. It consists of three staves. The top staff is a single melodic line in treble clef with a key signature of one sharp (F#) and a 4/4 time signature. The middle and bottom staves are piano accompaniment in treble and bass clefs, respectively, featuring chords and arpeggiated figures.

Handwritten musical notation, second system. It consists of three staves. The top staff continues the melody from the first system. The piano accompaniment in the lower staves continues with similar harmonic textures.

Handwritten musical notation, third system. It consists of three staves. The top staff features a melodic line with a triplet of eighth notes marked with a '3' above it. The piano accompaniment continues with chords and arpeggios.

Handwritten musical notation, fourth system. It consists of three staves. The top staff shows a melodic line with a triplet of eighth notes marked with a '3' above it. The piano accompaniment continues with chords and arpeggios.

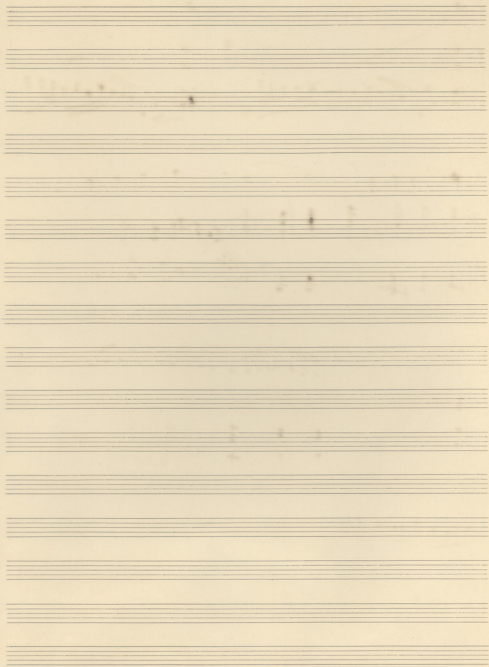


Handwritten musical notation on a grand staff. The first two staves are crossed out with a large diagonal slash. The third staff contains a melodic line with a triplet of eighth notes. The fourth staff contains a bass line with a triplet of eighth notes. The notation is in treble and bass clefs with a key signature of one sharp (F#).

Handwritten musical notation on a grand staff. The first staff is a single melodic line. The second and third staves contain complex chordal textures with many notes and accidentals. The fourth staff contains a bass line with some notes and accidentals. The notation is in treble and bass clefs with a key signature of one sharp (F#).

Handwritten musical notation on a grand staff. The first staff is a melodic line with eighth notes. The second and third staves contain chordal accompaniment with many notes and accidentals. The fourth staff contains a bass line with notes and accidentals. The notation is in treble and bass clefs with a key signature of one sharp (F#).

Handwritten musical notation on a grand staff. The first staff contains a single melodic line with notes and accidentals. The second, third, and fourth staves are empty.



This image shows a page of musical manuscript paper with 15 horizontal staves. The paper is aged and yellowed. The staves contain very faint, illegible musical notation, possibly handwritten or typed notes that have faded significantly. There are some dark spots and stains on the paper, particularly on the left side.



Handwritten musical notation on a single staff, featuring a melodic line with a prominent upward slur and several notes.

Handwritten musical notation on a single staff, including a section with a treble clef and a key signature of one sharp (F#).

Handwritten musical notation on a grand staff (treble and bass clefs), showing a complex piece with multiple staves and dynamic markings.

Handwritten signature or name, possibly "M. Wagner".